

The Taylor 25



FRONT ELEVATION

Contact our sales team for more information: belvedere@crystalcreekhomes.ca | 403-984-3501

All elevations, floorplans and dimensions are for illustrative purposes only and are intended to convey a concept and visualization of our homes. They are subject to modifications at any time and are not to be used for contractual purposes.



crystalcreekhomes.ca



The Taylor 25

272 BELVEDERE DRIVE SE

3763 SQFT

6 BEDROOMS | 4.5 BATHROOMS | TRIPLE TANDEM GARAGE

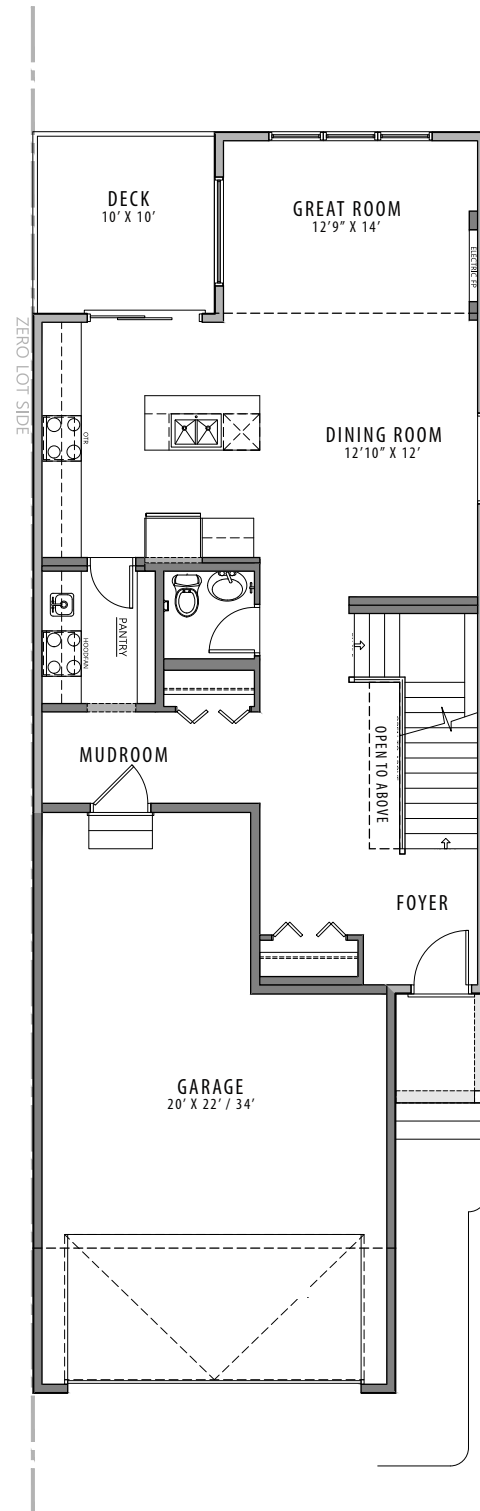


crystalcreekhomes.ca

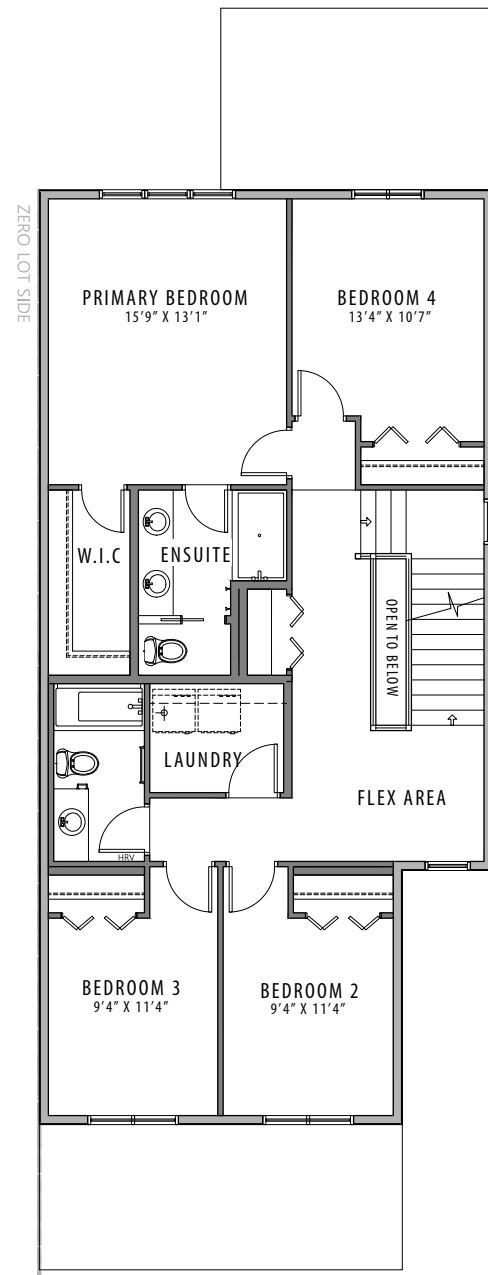
The Taylor 25

CRAFTSMAN

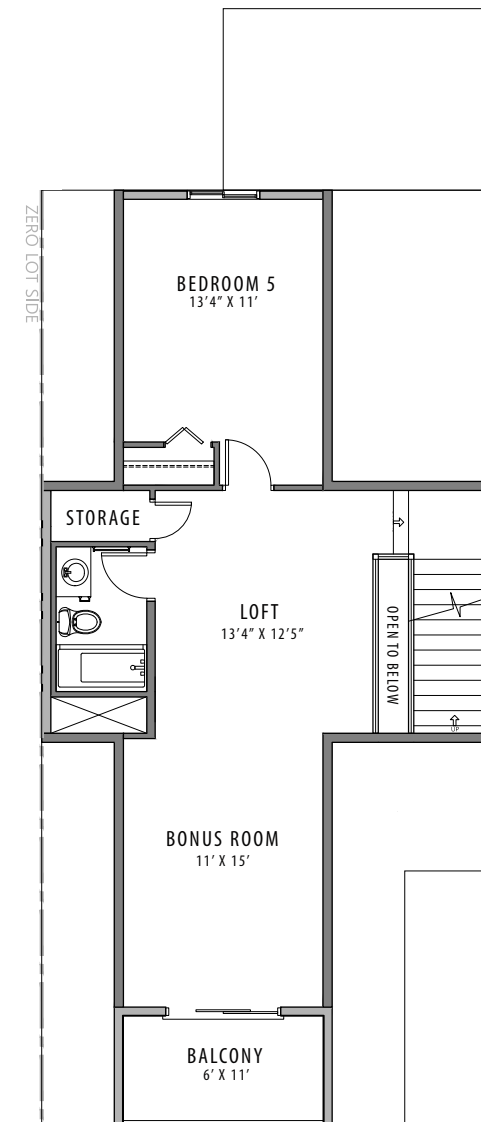
3763 SQ FT



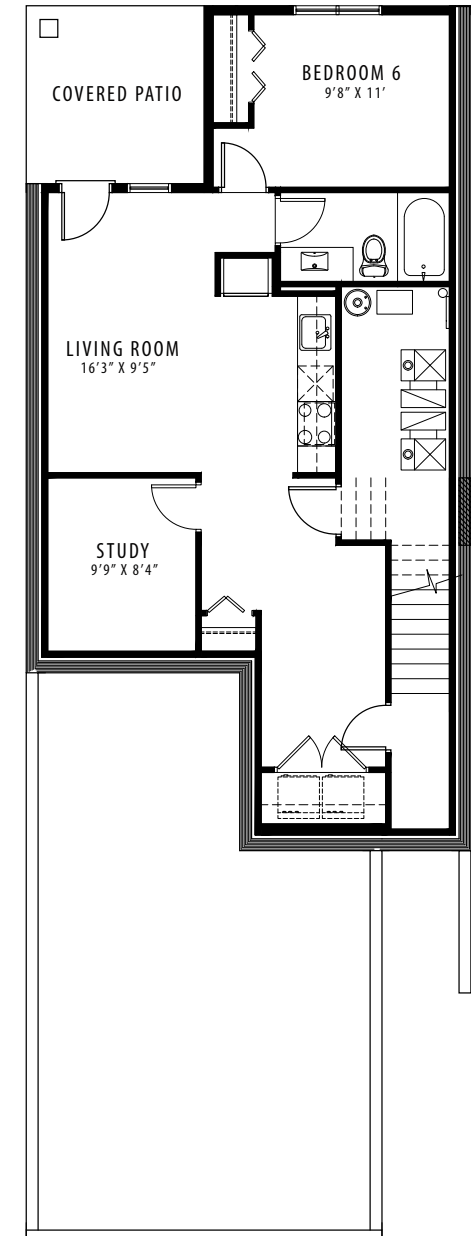
MAIN FLOOR | 968 SQ FT



SECOND FLOOR | 1203 SQ FT



THIRD FLOOR | 788 SQ FT



SECONDARY SUITE | 804 SQ FT