



Quick Possession Home



CRYSTAL CREEK
HOMES
19 YEARS
EST. 2004

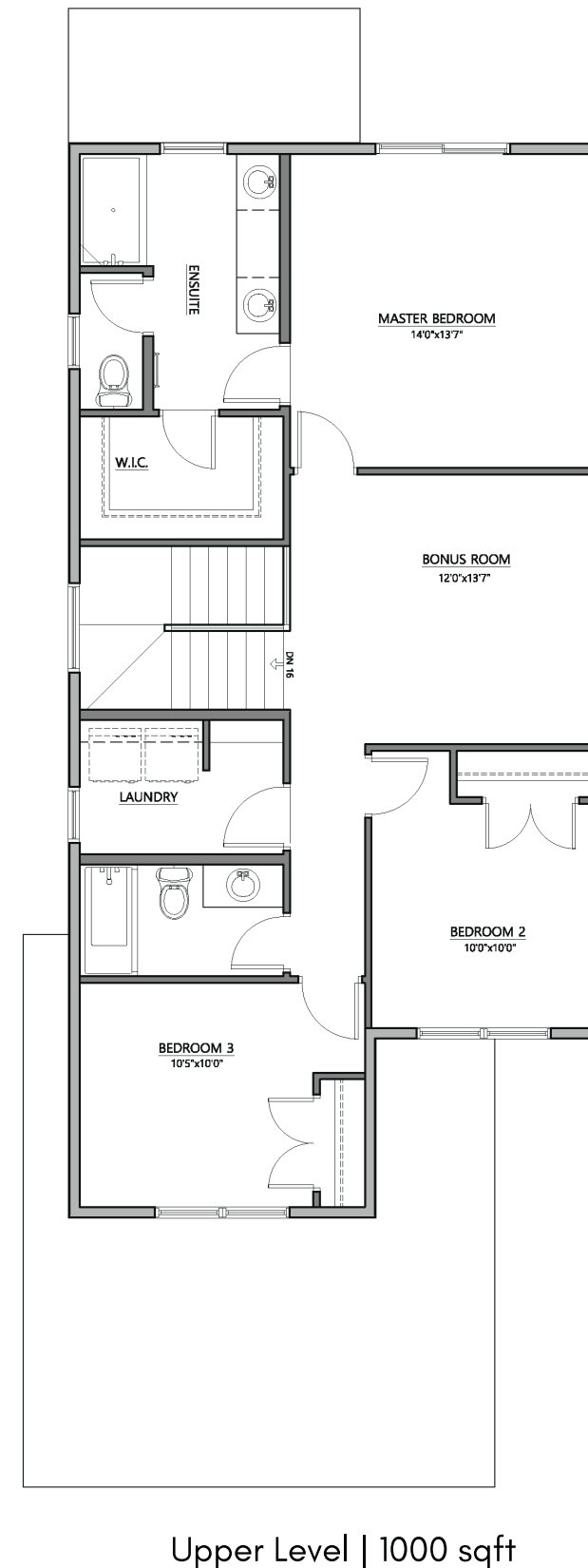
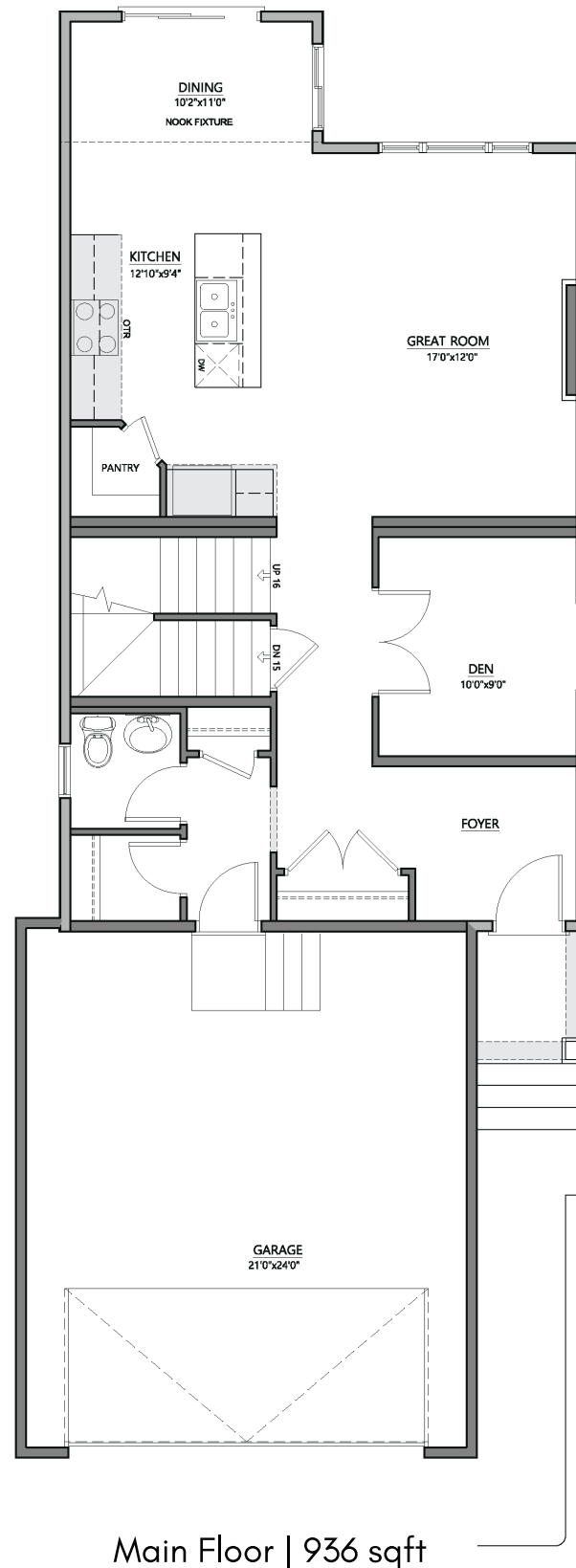
CRYSTAL CREEK
HOMES

The Maple
29 Penn Place
Spruce Grove

2.5 
3 
1947 sqft

The Maple

29 Penn Place - 1947 sqft



Elevation: Craftsman



This Home Features:

- Large oversized double front attached Garage
- South backyard
- Air-conditioning
- 9 ft main floor ceilings
- 8 ft doors on main floor
- Main floor Den/Office
- Raised Tray ceiling in master bedroom
- Large kitchen island with Quartz countertops
- Appliance allowance
- 42" upper cabinets in kitchen
- Waterline to fridge
- Laminate flooring on main floor
- 3 bedrooms
- Upper floor bonus room
- Upper floor laundry with window
- Tiled shower in ensuite
- Gemstone exterior lighting with remote
- Double swing closet doors with magnetic catches

All elevations, floorplans and dimensions are for illustrative purposes only and are intended to convey a concept and visualization of our homes. They are subject to modifications at any time and are not to be used for contractual purposes.