

The Onyx

3028 - 9th Street

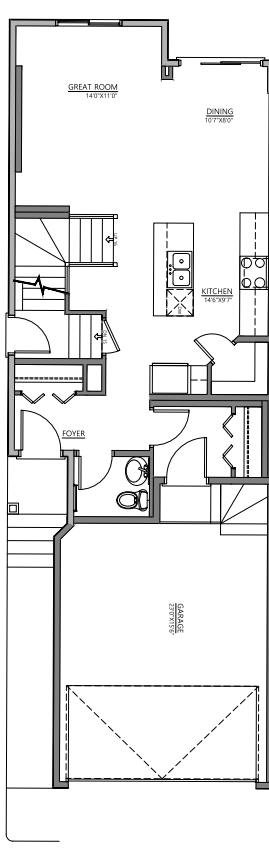
1625 SQFT

3 BEDROOMS | 2.5 BATHROOMS | 2 CAR GARAGE

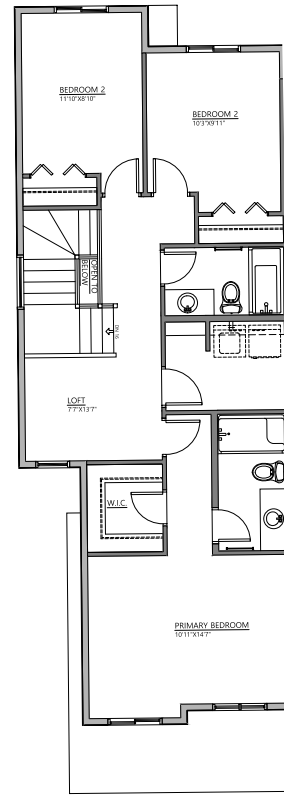


FRONT ELEVATION

MODERN FARMHOUSE



MAIN FLOOR | 688 SQFT



UPPER FLOOR | 937 SQFT

Contact our sales team for more information: maplecrest@crystalcreekhomes.ca | 780-702-6197

All elevations, floorplans and dimensions are for illustrative purposes only and are intended to convey a concept and visualization of our homes. They are subject to modifications at any time and are not to be used for contractual purposes.



crystalcreekhomes.ca