



**CRYSTAL CREEK**  
HOMES

**QUICK  
POSSESSION**



## **The Dahlia**

7013 52 Ave

**1,425 SQFT**

3 BEDROOMS | 2.5 BATHROOMS

*élan*

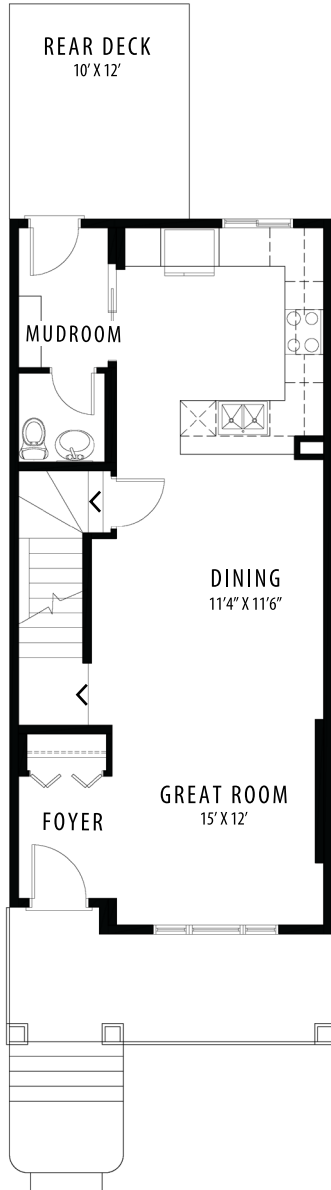
crystalcreekhomes.ca

# The Dahlia

7013 52 Ave

1,425 SQFT

3 BEDROOMS | 2.5 BATHROOMS

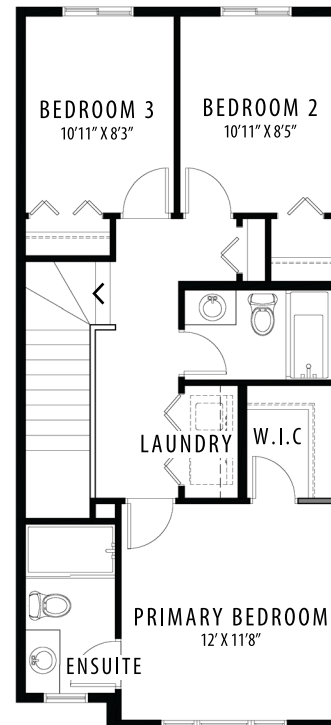


MAIN FLOOR | 713 SQFT



FRONT ELEVATION

MODERN FARMHOUSE



UPPER FLOOR | 712 SQFT

Contact our sales team for more information: [elan@crystalcreekhomes.ca](mailto:elan@crystalcreekhomes.ca) | 780-702-6198

All elevations, floorplans and dimensions are for illustrative purposes only and are intended to convey a concept and visualization of our homes. They are subject to modifications at any time and are not to be used for contractual purposes.



[crystalcreekhomes.ca](http://crystalcreekhomes.ca)