



CRYSTAL CREEK
HOMES

**QUICK
POSSESSION**



The Maple

73 Penn Place

1,936 SQFT

3 BEDROOMS | 2.5 BATHROOMS | 2 CAR GARAGE

This home features an upgraded kitchen with quartz countertops, cabinets to the ceiling and two-toned cabinetry, main floor den, a spindled railing staircase, and a side entrance with 9' basement ceilings for future income potential.



crystalcreekhomes.ca

The Maple

73 Penn Place

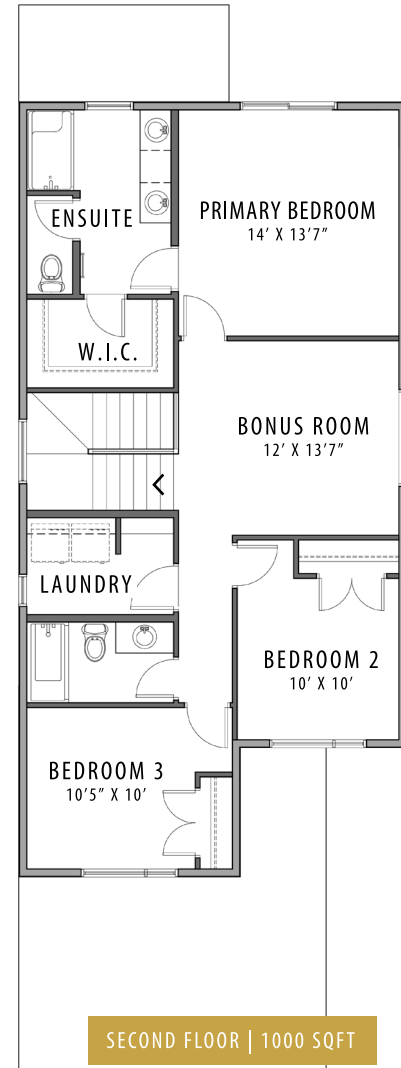
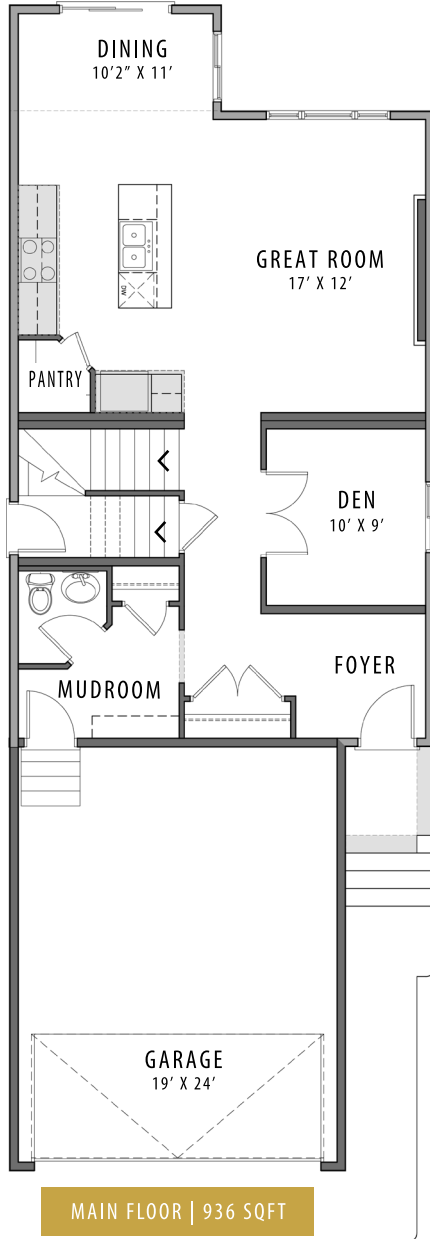
1,936 SQFT

3 BEDROOMS | 2.5 BATHROOMS



FRONT ELEVATION

PRAIRIE



Contact our sales team for more information: prescott@crystalcreekhomes.ca | 780-702-6190

All elevations, floorplans and dimensions are for illustrative purposes only and are intended to convey a concept and visualization of our homes. They are subject to modifications at any time and are not to be used for contractual purposes.



crystalcreekhomes.ca