



**CRYSTAL CREEK**  
HOMES

**QUICK  
POSSESSION**



## The Mahogany ▲

75 Penn Place

**2,226 SQFT**

3 BEDROOMS | 2.5 BATHROOMS | 2 CAR GARAGE

**This home features** an open-to-below concept with large south-facing windows, an upgraded kitchen with cabinets to the ceiling, quartz countertops, and MDF shelving in the pantry, a main-floor den, a spindle railing staircase, a 5-piece ensuite with upgraded tiled shower, soaker tub, and separate water closet, and a side entrance for future income potential.



crystalcreekhomes.ca

# The Mahogany ▶

75 Penn Place

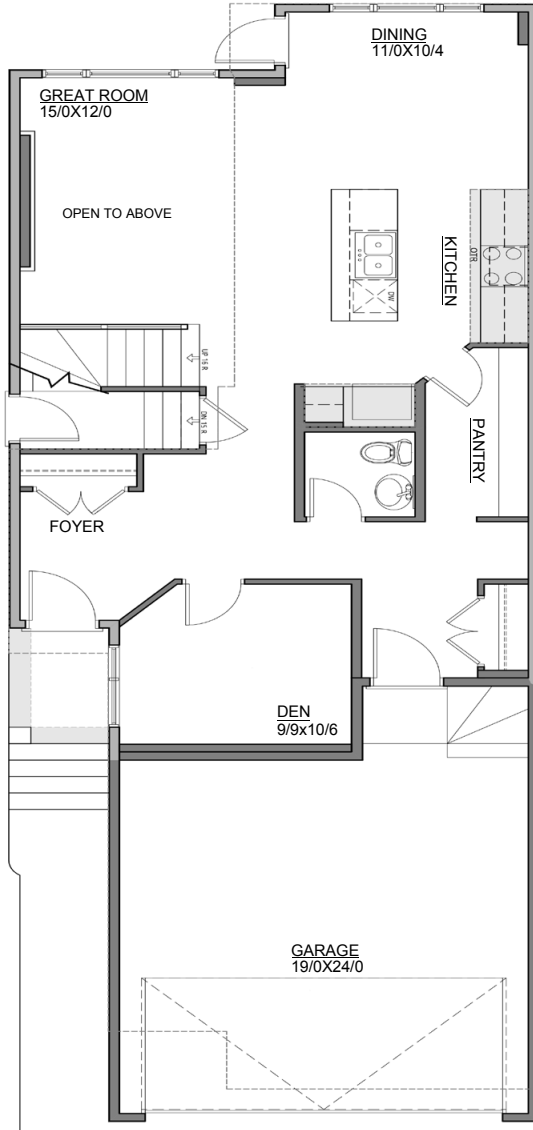
2,226 SQFT

3 BEDROOMS | 2.5 BATHROOMS

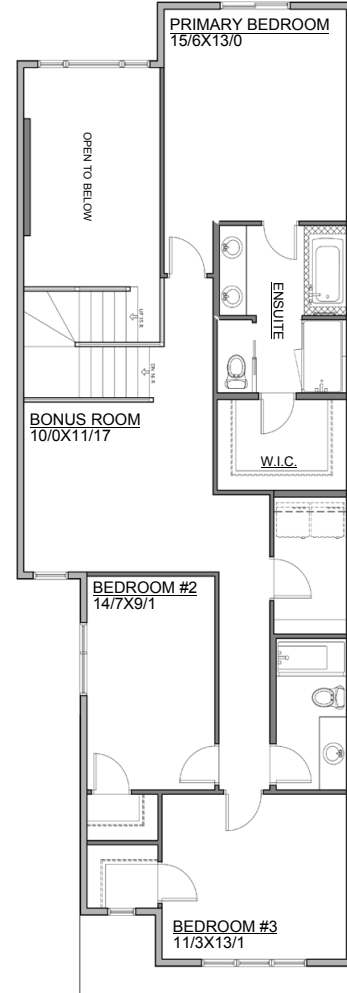


FRONT ELEVATION

PRAIRIE



MAIN FLOOR | 984 SQFT



SECOND FLOOR | 1,242 SQFT

Contact our sales team for more information: [prescott@crystalcreekhomes.ca](mailto:prescott@crystalcreekhomes.ca) | 780-702-6190

All elevations, floorplans and dimensions are for illustrative purposes only and are intended to convey a concept and visualization of our homes. They are subject to modifications at any time and are not to be used for contractual purposes.



[crystalcreekhomes.ca](http://crystalcreekhomes.ca)