

# The Orchid

2018 Maple Road

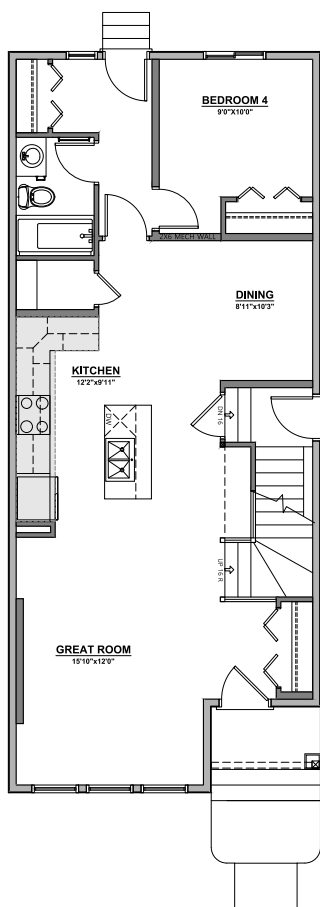
1813 SQFT

4 BEDROOMS | 3 BATHROOMS

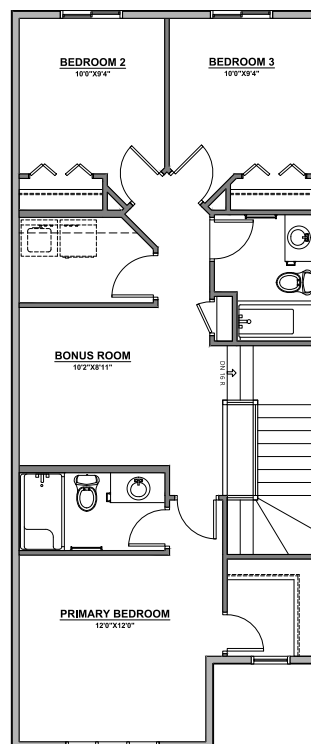


FRONT ELEVATION

PRAIRIE



MAIN FLOOR | 912 SQFT



UPPER FLOOR | 901 SQFT

Contact our sales team for more information: [maplecrest@crystalcreekhomes.ca](mailto:maplecrest@crystalcreekhomes.ca) | 780-702-6197

All elevations, floorplans and dimensions are for illustrative purposes only and are intended to convey a concept and visualization of our homes. They are subject to modifications at any time and are not to be used for contractual purposes.



[crystalcreekhomes.ca](http://crystalcreekhomes.ca)