

# The Apollo 20

AVAILABLE ELEVATIONS



FRONT ELEVATION

PRAIRIE



## The Apollo 20

PRAIRIE

1,756 SQFT

4 BEDROOMS | 3 BATHROOMS | 2 CAR GARAGE

Please confirm with our Sales Team which elevations are available in your desired community. All elevations, floorplans and dimensions are for illustrative purposes only and are intended to convey a concept and visualization of our homes.

They are subject to modifications at any time and are not to be used for contractual purposes. Square footage noted reflects Residential Measurement Standard.



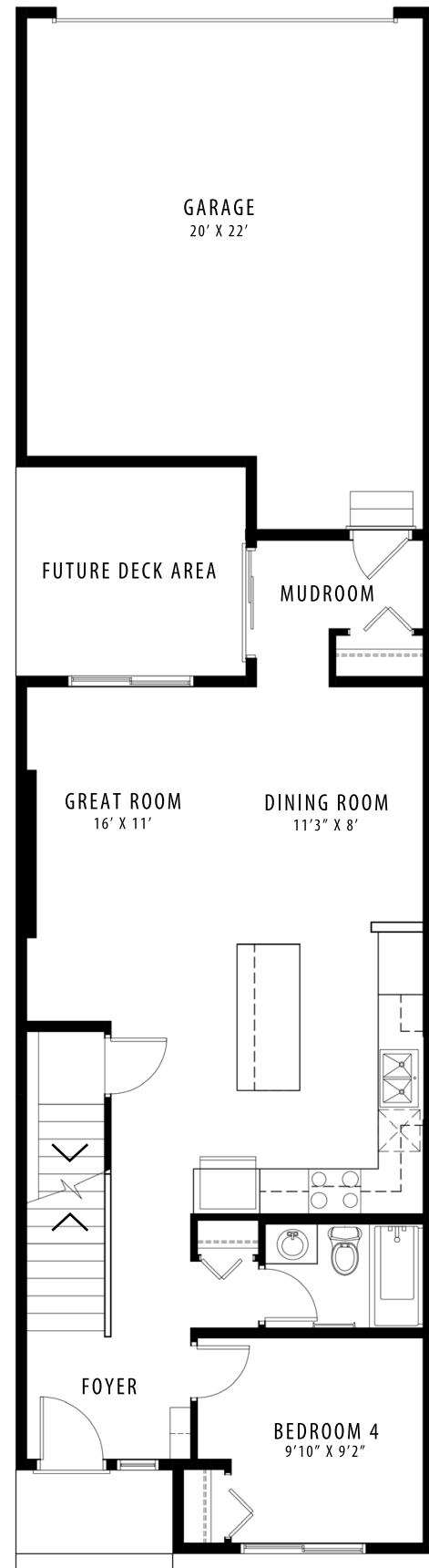
[crystalcreekhomes.ca](http://crystalcreekhomes.ca)

[crystalcreekhomes.ca](http://crystalcreekhomes.ca)

# The Apollo 20

PRAIRIE

1,756 SQFT



MAIN FLOOR | 873 SQFT



UPPER FLOOR | 883 SQFT