

# The Grayson 44



Please confirm with our Sales Team which elevations are available in your desired community. All elevations, floorplans and dimensions are for illustrative purposes only and are intended to convey a concept and visualization of our homes. They are subject to modifications at any time and are not to be used for contractual purposes. Square footage noted reflects Residential Measurement Standard.



## The Grayson 44

CRAFTSMAN

3015 SQ FT

3 BEDROOMS | 2.5 BATHROOMS | 3 CAR GARAGE



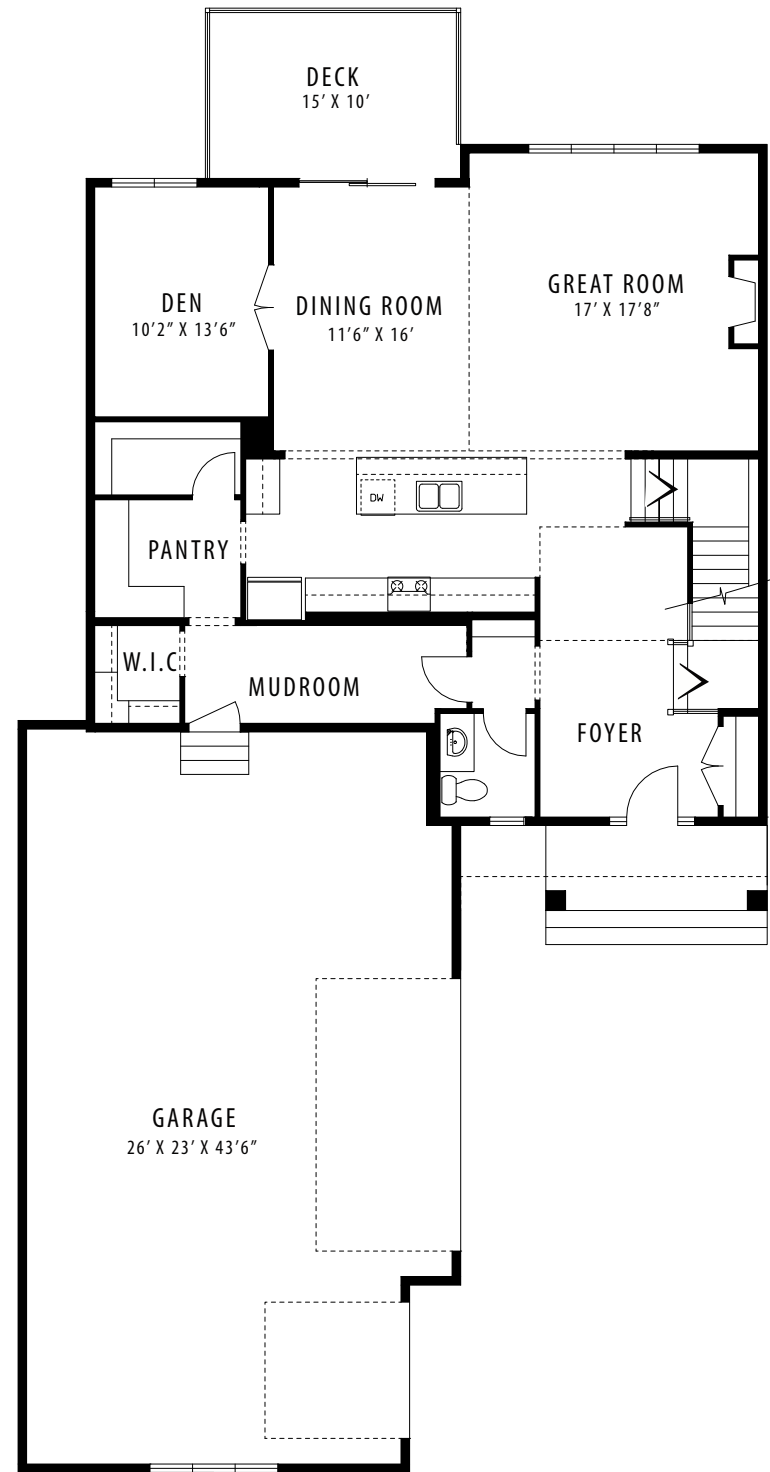
[crystalcreekhomes.ca](http://crystalcreekhomes.ca)

[crystalcreekhomes.ca](http://crystalcreekhomes.ca)

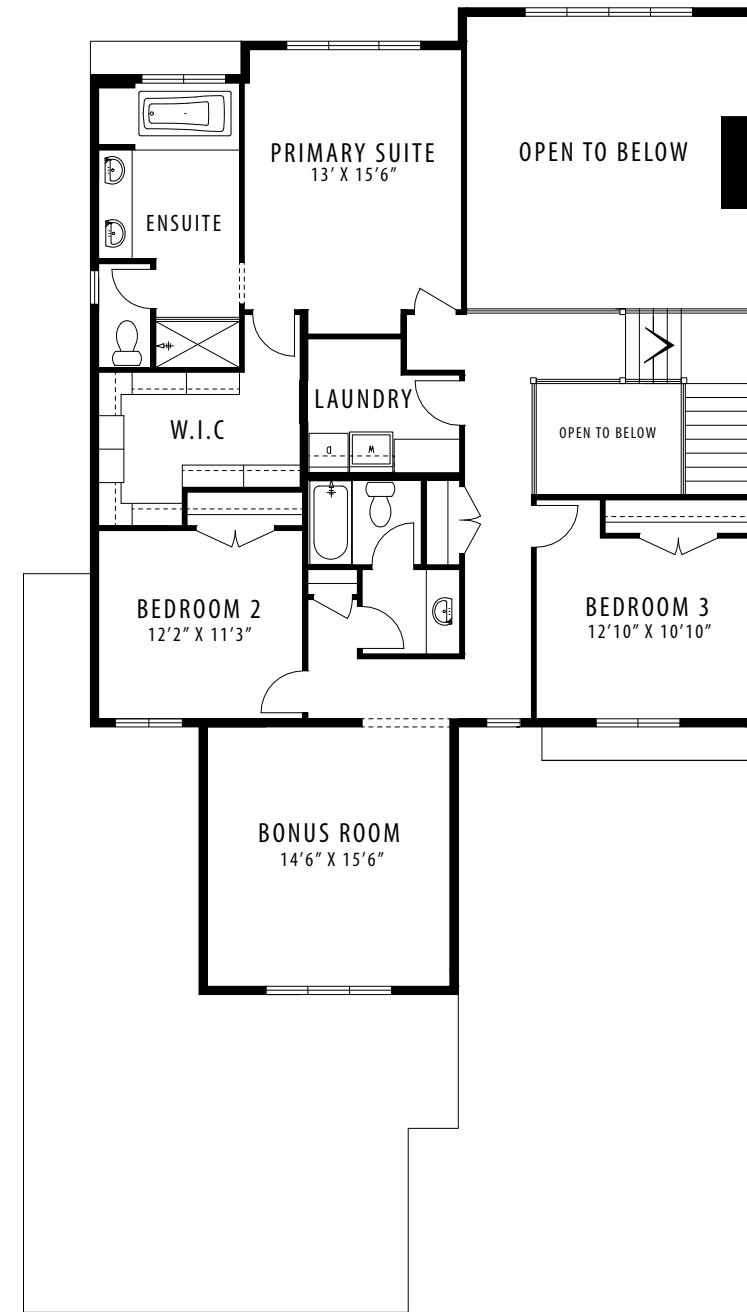
# The Grayson 44

CRAFTSMAN

3015 SQ FT



MAIN FLOOR | 1466 SQ FT



UPPER FLOOR | 1549 SQ FT