

RICHMOND *Luxe*

The Richmond community offers a mix of modern amenities and historical charm. It's known for its tree-lined streets, proximity to downtown Calgary, access to Crowchild Trail, and vibrant local culture. Residents enjoy easy access to parks like Richmond Green Golf Course and Shaganappi Park, as well as trendy shops, restaurants, and cafes along 17th Avenue SW. With excellent schools and community events, Richmond is a sought-after neighborhood for families and professionals alike.

At Richmond Luxe you will enjoy maintenance-free living, private patios and off street parking in your single detached garage.

2220 26 Ave SW, Calgary

www.crystalcreekhomes.ca/richmond

Contact our team for more information:



Mathew Said-Morley
 Phone: 403-930-6390
 Email: richmond@crystalcreekhomes.ca



RICHMOND *Luxe*

BY CRYSTAL CREEK HOMES



Inner city luxury living

An unparalleled urban living experience in the heart of the city.

Modern townhome designs, premium finishes and rear detached garages surrounded by amenities in the established community of Richmond.



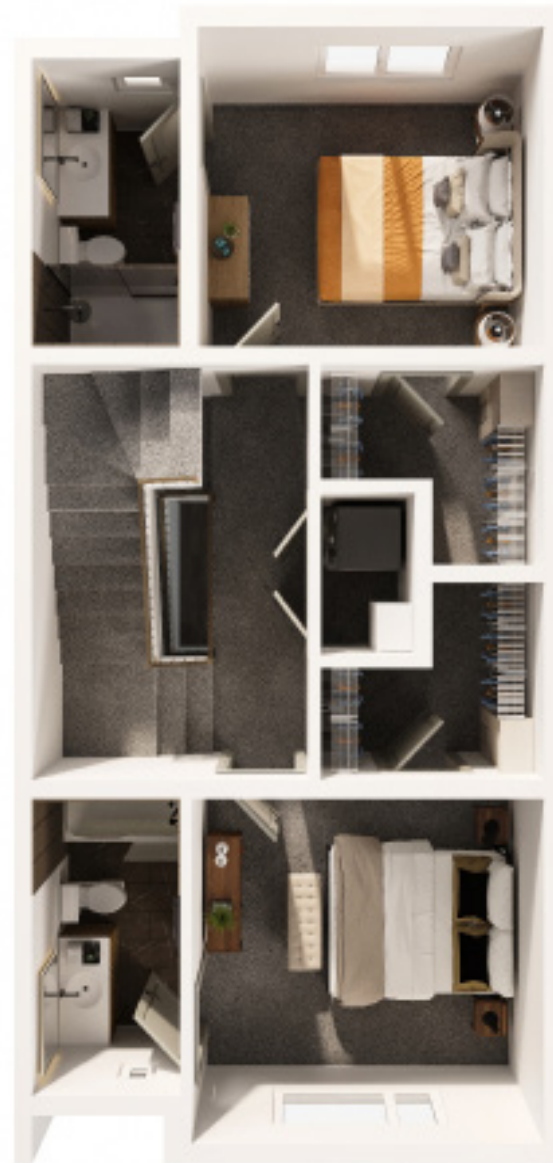
UNIT C

2 Bed | 2 Full Bath | 2 Half Bath | Loft + Patio 2338 SQ. FT.
\$789,900

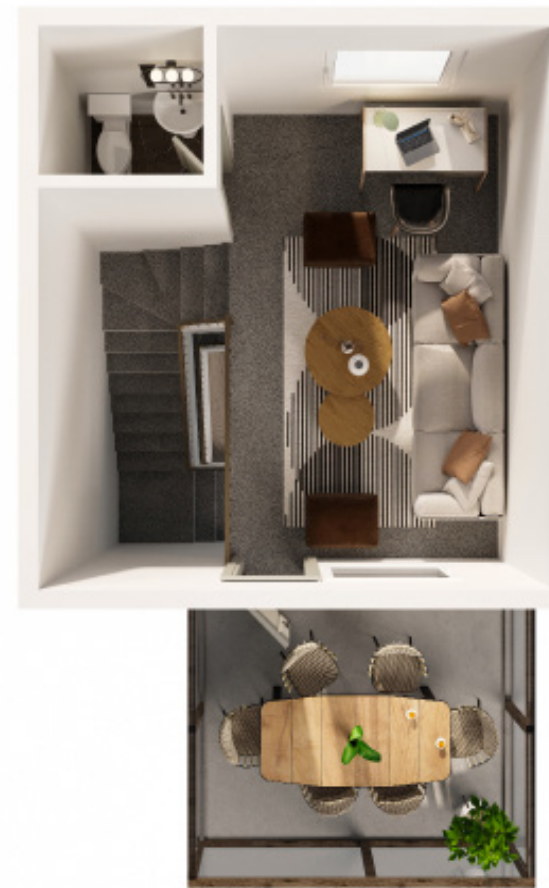
Interior Finishes include designer cabinetry, Black Stainless Steel KitchenAid Appliances, Silgranite Undermount Sink, Quartz countertops, Luxury Vinyl Plank Flooring, full height Tile Backsplash, Upgraded Lighting Fixtures, Black Hardware, and a stacked full size Washer and Dryer.



Main Floor + Patio | 723 SQ. FT



Second Floor | 636 SQ. FT



Loft + Terrace | 408 SQ. FT



Undeveloped Basement | 571 SQ. FT