

The Sheffield 44

AVAILABLE ELEVATIONS



FRONT ELEVATION

PRAIRIE



FRONT ELEVATION

CRAFTSMAN



FRONT ELEVATION

MODERN FARMHOUSE

Please confirm with our Sales Team which elevations are available in your desired community. All elevations, floorplans and dimensions are for illustrative purposes only and are intended to convey a concept and visualization of our homes. They are subject to modifications at any time and are not to be used for contractual purposes. Square footage noted reflects Residential Measurement Standard.



crystalcreekhomes.ca



The Sheffield 44

PRAIRIE

2809 SQ FT

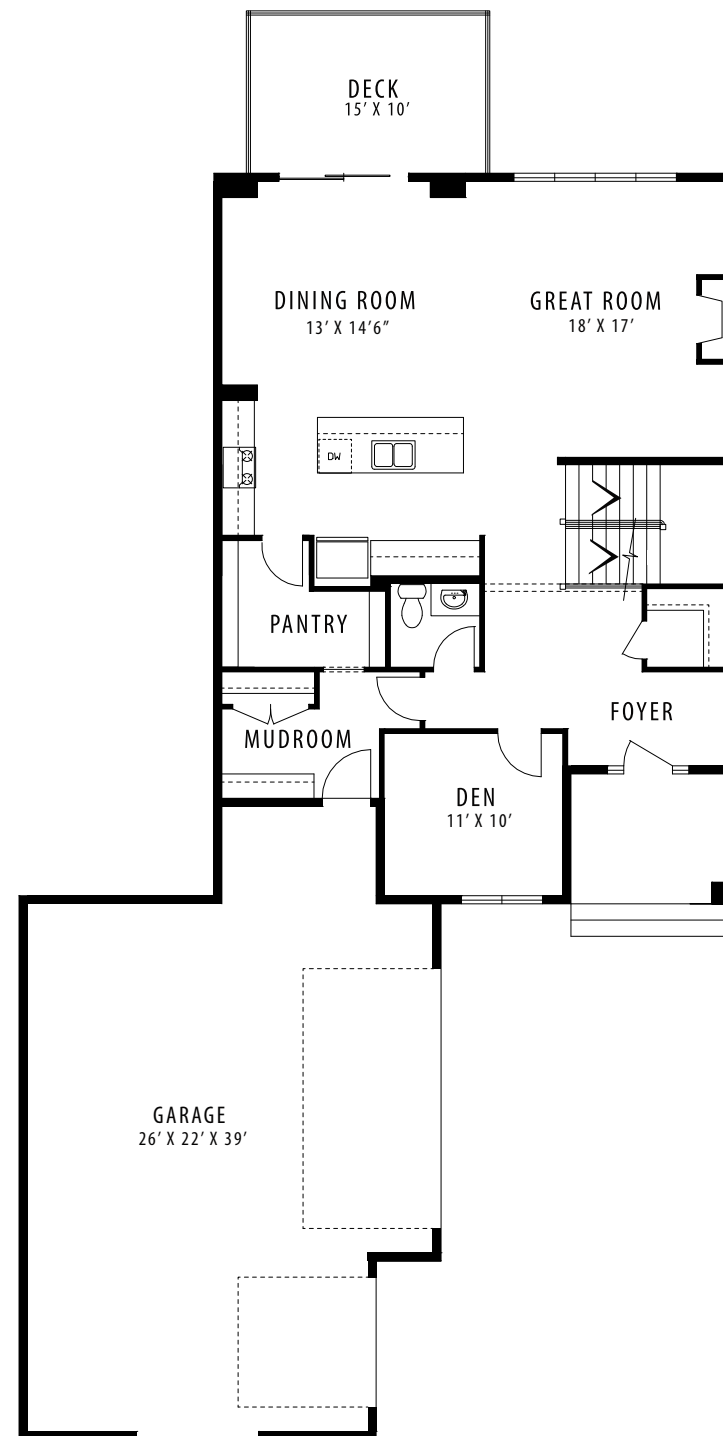
3 BEDROOMS | 2.5 BATHROOMS | 3 CAR GARAGE

crystalcreekhomes.ca

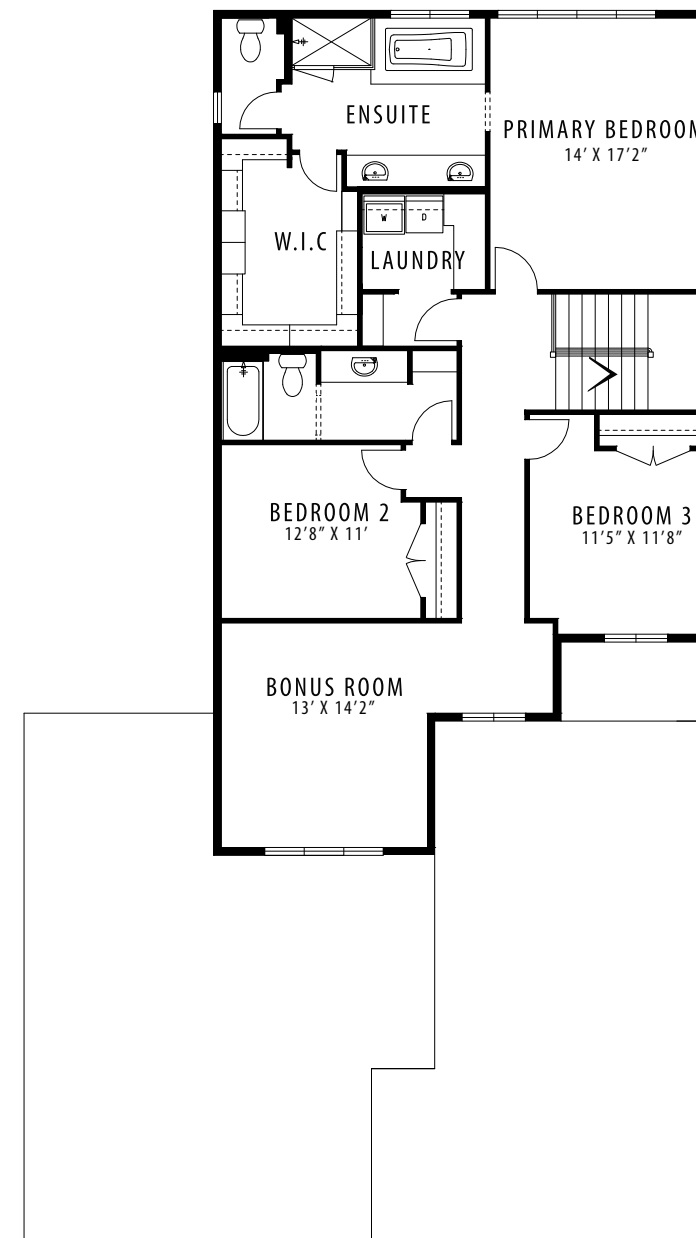
The Sheffield 44

PRAIRIE

2809 SQ FT



MAIN FLOOR | 1300 SQ FT



UPPER FLOOR | 1509 SQ FT