

# The Somerside 44



Please confirm with our Sales Team which elevations are available in your desired community. All elevations, floorplans and dimensions are for illustrative purposes only and are intended to convey a concept and visualization of our homes. They are subject to modifications at any time and are not to be used for contractual purposes. Square footage noted reflects Residential Measurement Standard.



[crystalcreekhomes.ca](http://crystalcreekhomes.ca)



# The Somerside 44

PRAIRIE

**3211 SQFT**

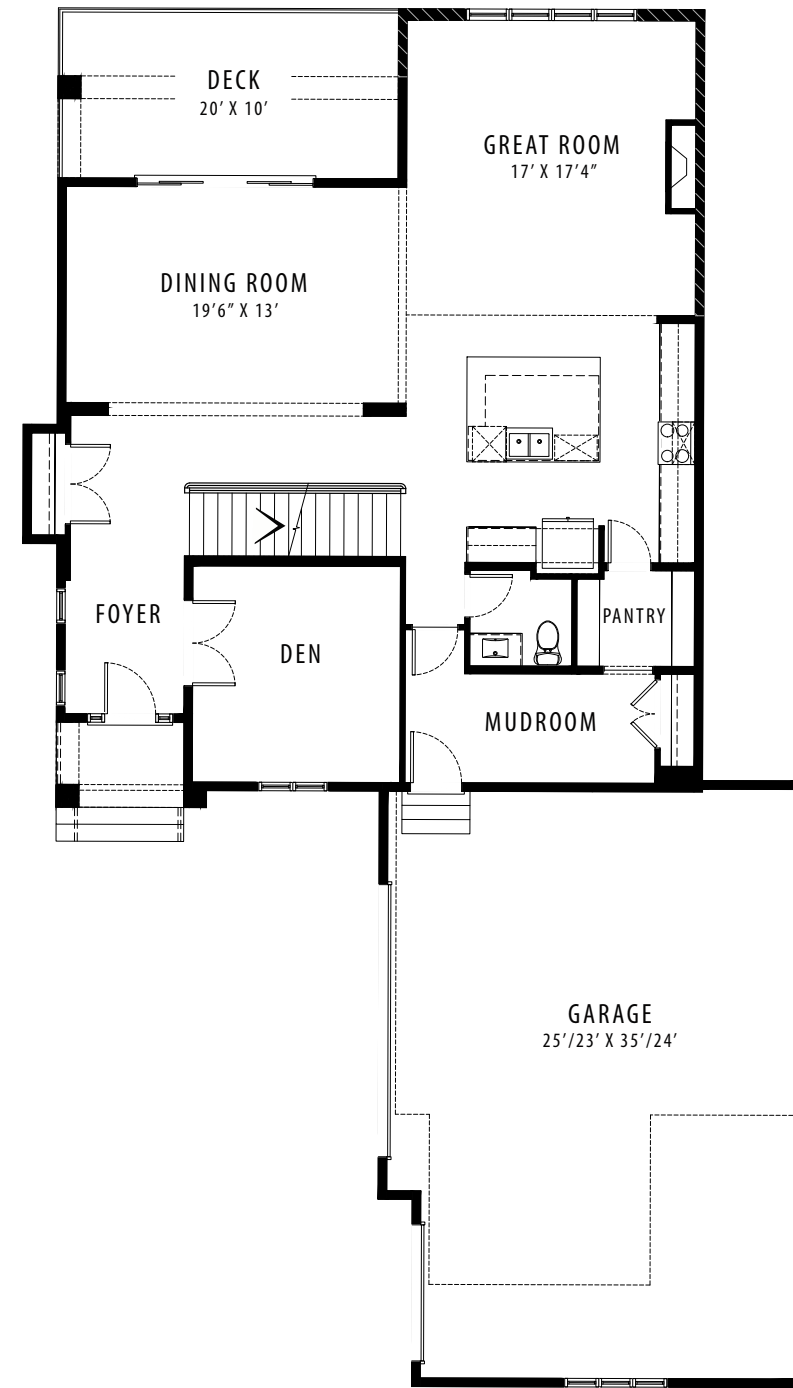
3 BEDROOMS | 2.5 BATHROOMS | 3 CAR GARAGE

[crystalcreekhomes.ca](http://crystalcreekhomes.ca)

# The Somerside 44

PRAIRIE

3211 SQ FT



MAIN FLOOR | 1532 SQ FT



UPPER LEVEL | 1679 SQ FT