



CRYSTAL CREEK HOMES

**QUICK
POSSESSION**



The Franklin

4 Watermark Lane

4854 SQFT

5 BEDROOMS | 5 FULL BATHROOMS | 2 HALF BATHS | BASEMENT DEVELOPMENT (1020 SQ FT)



crystalcreekhomes.ca

The Franklin

4 Watermark Lane

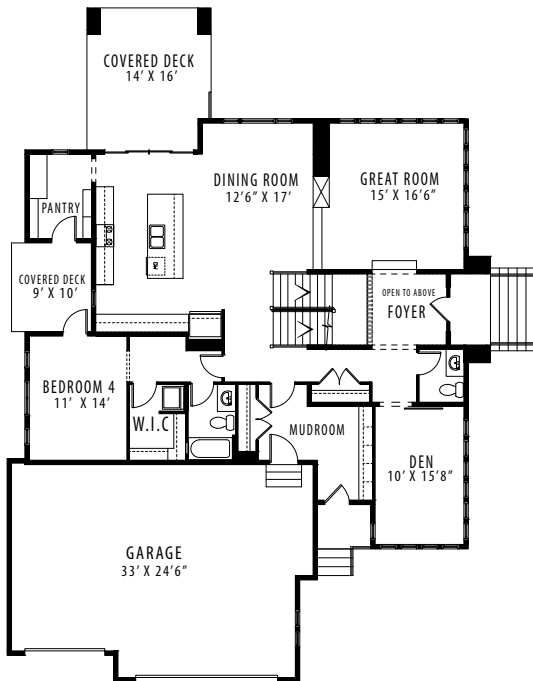
4854 SQFT

5 BEDROOMS | 5 FULL BATHROOMS | 2 HALF BATHS | BASEMENT DEVELOPMENT (1020 SQ FT)

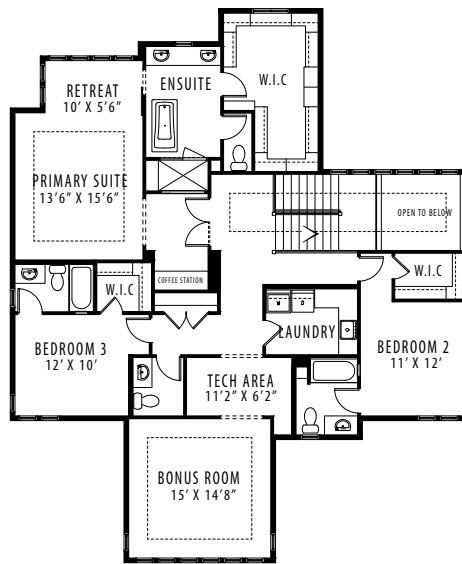


SIDE ELEVATION

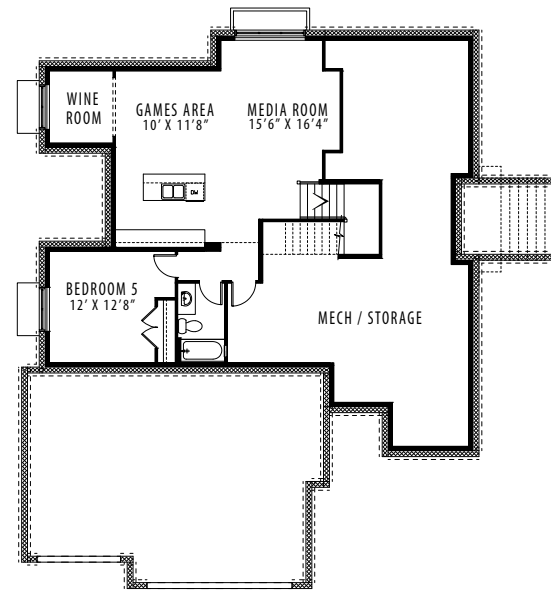
PRAIRIE



MAIN FLOOR | 1924 SQFT



MAIN FLOOR | 1910 SQFT



LOWER LEVEL | 1020 SQFT

Contact our sales team for more information: watermark@crystalcreekhomes.ca | 403-930-6388

All elevations, floorplans and dimensions are for illustrative purposes only and are intended to convey a concept and visualization of our homes. They are subject to modifications at any time and are not to be used for contractual purposes.



crystalcreekhomes.ca