



Jackson

175 Belvedere Crescent

1904 SQ FT

4 BEDROOMS | 3 BATHROOMS | LANED HOME



crystalcreekhomes.ca

Jackson

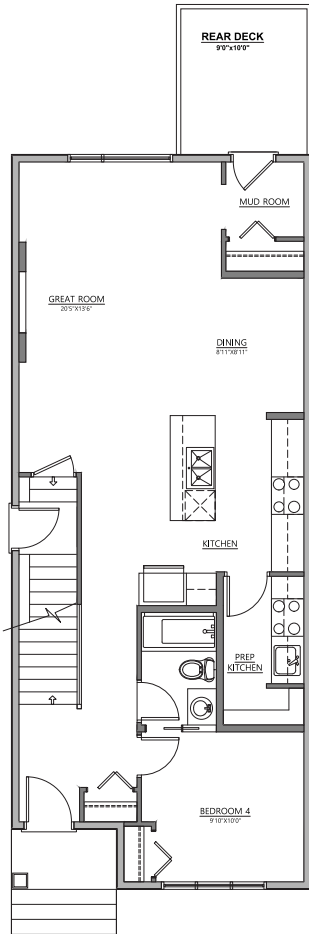
175 Belvedere Crescent

1904 SQ FT

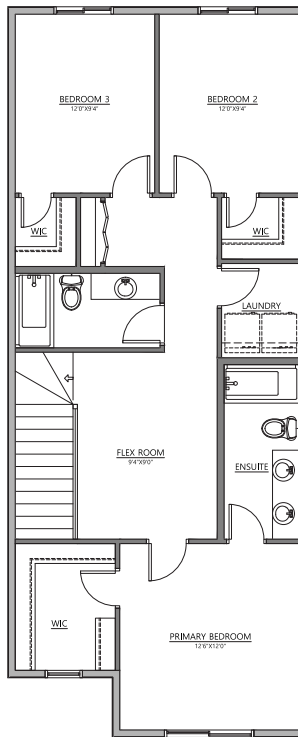
4 BEDROOMS | 3 BATHROOMS | LANED HOME



FRONT ELEVATION MODERN FARMHOUSE



MAIN FLOOR | 952 SQ FT



UPPER FLOOR | 952 SQ FT



INTERIOR FINISHINGS | CORTES

Contact our sales team for more information: belvedere@crystalcreekhomes.ca | 403-984-3501

All elevations, floorplans and dimensions are for illustrative purposes only and are intended to convey a concept visualization of our homes. They are subject to modifications at any time and are not to be used for contractual purposes.



crystalcreekhomes.ca