



Avery

191 Belvedere Crescent

1560 SQ FT

3 BEDROOMS | 2.5 BATHROOMS | LANED HOME

 BELVEDERE

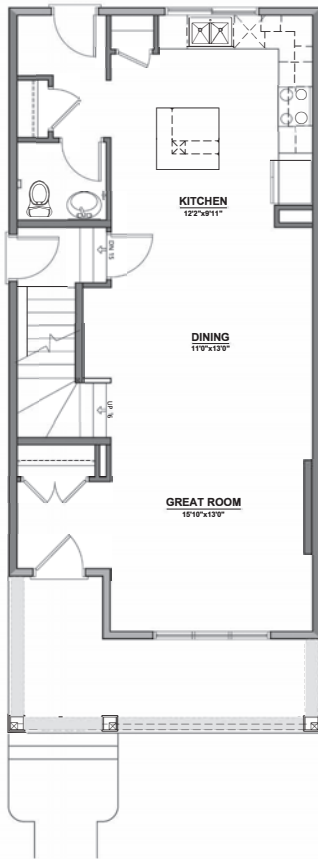
crystalcreekhomes.ca

Avery

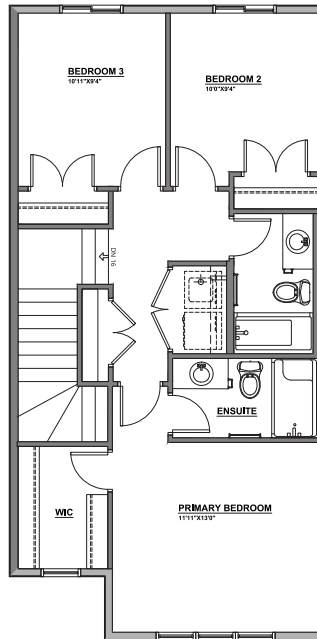
191 Belvedere Crescent

1560 SQ FT

3 BEDROOMS | 2.5 BATHROOMS | LANED HOME



MAIN FLOOR | 784 SQ FT



UPPER FLOOR | 776 SQ FT



INTERIOR FINISHINGS | SIDNEY

Contact our sales team for more information: belvedere@crystalcreekhomes.ca | 403-984-3501

All elevations, floorplans and dimensions are for illustrative purposes only and are intended to convey a concept visualization of our homes. They are subject to modifications at any time and are not to be used for contractual purposes.



crystalcreekhomes.ca