



# Whitney

199 Belvedere Crescent

**1712** SQ FT

3 BEDROOMS | 2.5 BATHROOMS | LANED HOME



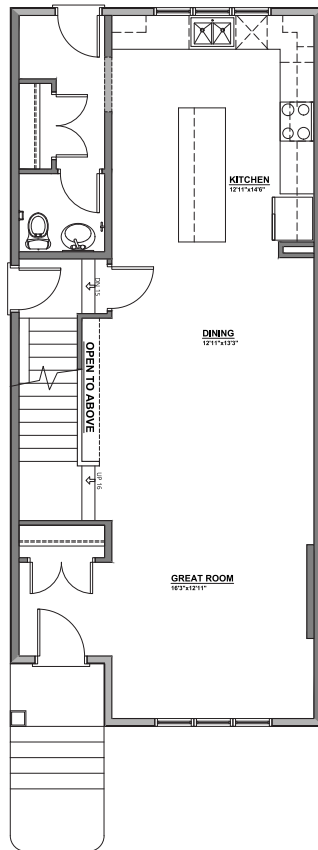
[crystalcreekhomes.ca](http://crystalcreekhomes.ca)

# Whitney

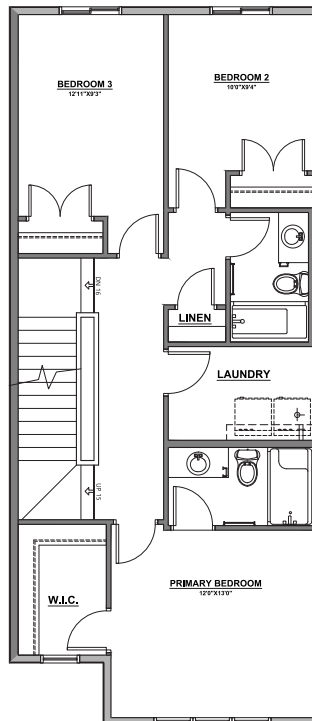
199 Belvedere Crescent

1712 SQ FT

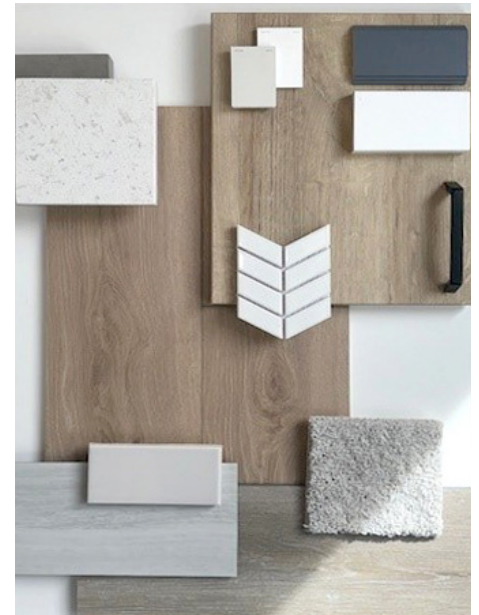
3 BEDROOMS | 2.5 BATHROOMS | LANED HOME



MAIN FLOOR | 896 SQ FT



UPPER FLOOR | 816 SQ FT



INTERIOR FINISHINGS | TOFINO

Contact our sales team for more information: [belvedere@crystalcreekhomes.ca](mailto:belvedere@crystalcreekhomes.ca) | 403-984-3501

All elevations, floorplans and dimensions are for illustrative purposes only and are intended to convey a concept visualization of our homes. They are subject to modifications at any time and are not to be used for contractual purposes.



[crystalcreekhomes.ca](http://crystalcreekhomes.ca)