



Whitney

199 Belvedere Crescent

1712 SQ FT

3 BEDROOMS | 2.5 BATHROOMS | LANED HOME



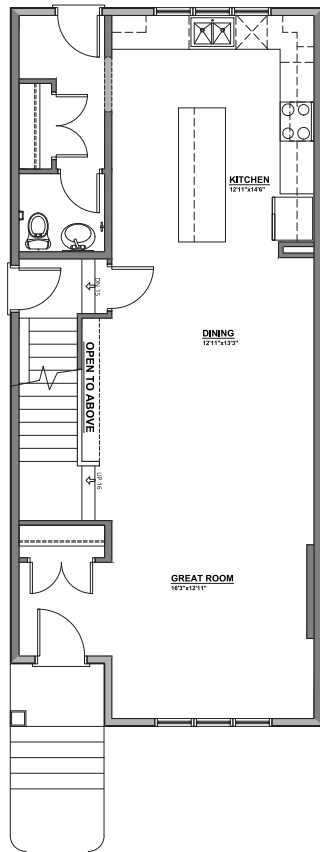
crystalcreekhomes.ca

Whitney

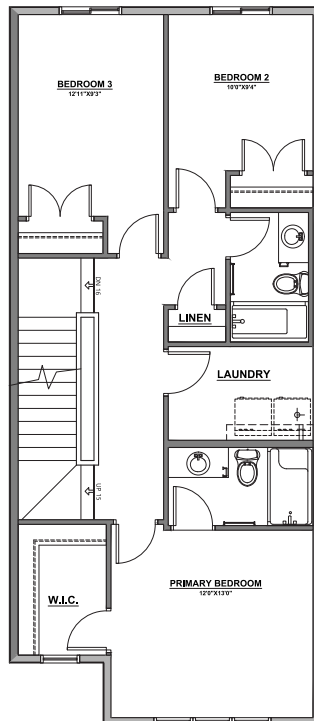
199 Belvedere Crescent

1712 SQ FT

3 BEDROOMS | 2.5 BATHROOMS | LANED HOME



MAIN FLOOR | 896 SQ FT



UPPER FLOOR | 816 SQ FT



INTERIOR FINISHINGS | TOFINO

Contact our sales team for more information: belvedere@crystalcreekhomes.ca | 403-984-3501

All elevations, floorplans and dimensions are for illustrative purposes only and are intended to convey a concept visualization of our homes. They are subject to modifications at any time and are not to be used for contractual purposes.



crystalcreekhomes.ca