



# Jackson

215 Belvedere Crescent

**1904** SQ FT

4 BEDROOMS | 3 BATHROOMS | LANED HOME



[crystalcreekhomes.ca](http://crystalcreekhomes.ca)

# Jackson

215 Belvedere Crescent

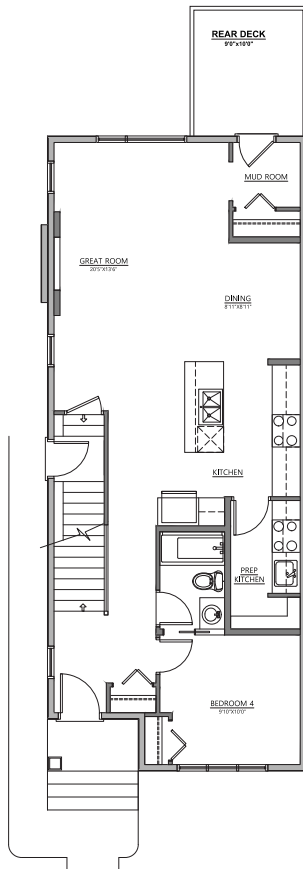
1904 SQ FT

4 BEDROOMS | 3 BATHROOMS | LANED HOME

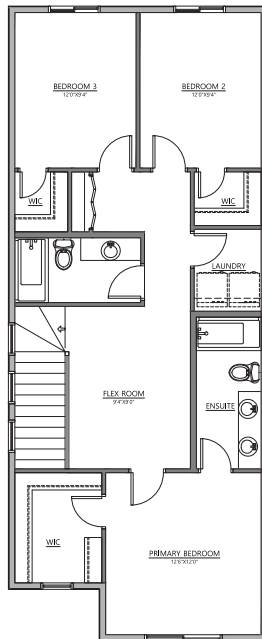


FRONT ELEVATION

PRARIE



MAIN FLOOR | 952 SQ FT



UPPER FLOOR | 952 SQ FT



INTERIOR FINISHINGS | SOOKE

Contact our sales team for more information: [belvedere@crystalcreekhomes.ca](mailto:belvedere@crystalcreekhomes.ca) | 403-984-3501

All elevations, floorplans and dimensions are for illustrative purposes only and are intended to convey a concept visualization of our homes. They are subject to modifications at any time and are not to be used for contractual purposes.



[crystalcreekhomes.ca](http://crystalcreekhomes.ca)