



Carson

147 Belvedere Crescent

2006 SQ FT

3 BEDROOMS | 3 BATHROOMS | 2 CAR GARAGE



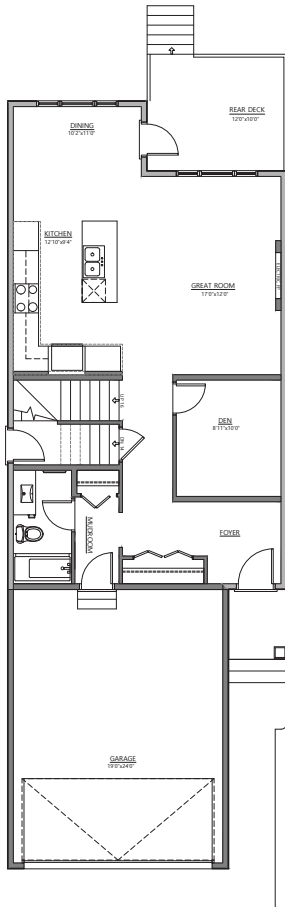
crystalcreekhomes.ca

Carson

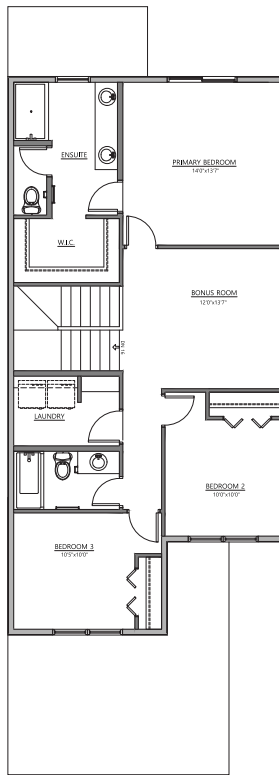
147 Belvedere Crescent

2006 SQ FT

3 BEDROOMS | 3 BATHROOMS | 2 CAR GARAGE



MAIN FLOOR | 936 SQ FT



UPPER FLOOR | 1070 SQ FT



INTERIOR FINISHINGS | SIDNEY

Contact our sales team for more information: belvedere@crystalcreekhomes.ca | 403-984-3501

All elevations, floorplans and dimensions are for illustrative purposes only and are intended to convey a concept visualization of our homes. They are subject to modifications at any time and are not to be used for contractual purposes.



crystalcreekhomes.ca