



# Taylor

167 Belvedere Crescent      **3018** SQ FT

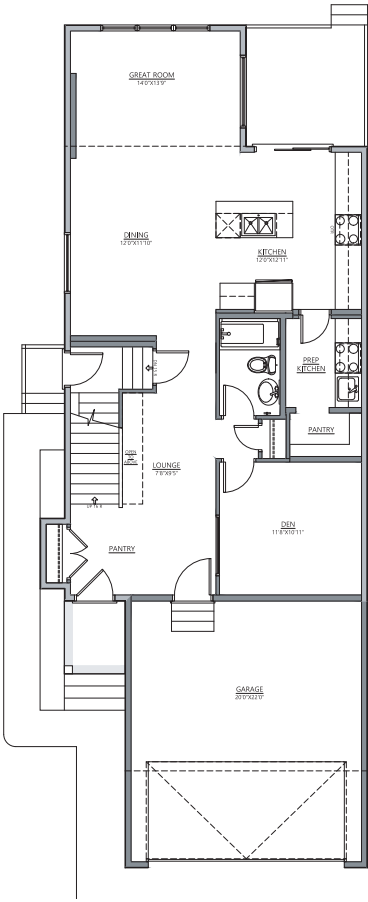
5 BEDROOMS | 4 BATHROOMS | 2 CAR GARAGE

# Taylor

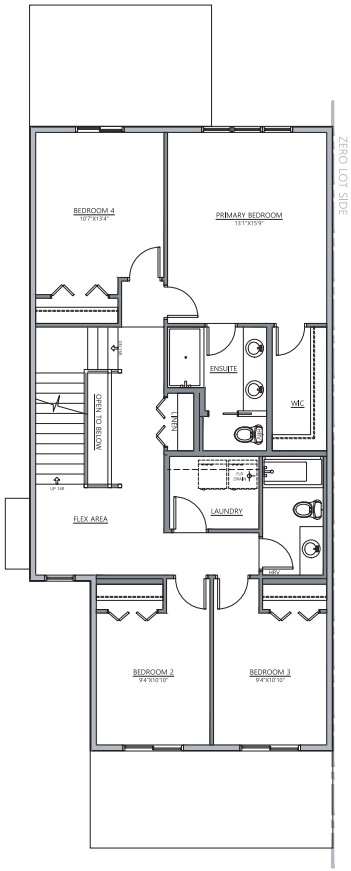
167 Belvedere Crescent

**3018 SQ FT**

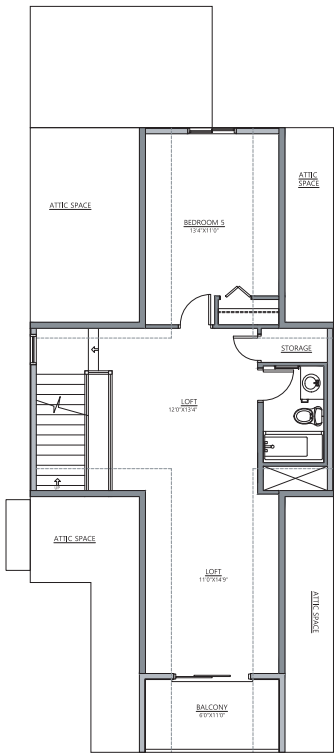
5 BEDROOMS | 4 BATHROOMS | 2 CAR GARAGE



MAIN FLOOR | 1099 SQ FT



UPPER FLOOR | 1203 SQ FT



LOFT | 716 SQ FT



INTERIOR FINISHINGS | CORTES

Contact our sales team for more information: [belvedere@crystalcreekhomes.ca](mailto:belvedere@crystalcreekhomes.ca) | 403-984-3501

All elevations, floorplans and dimensions are for illustrative purposes only and are intended to convey a concept visualization of our homes. They are subject to modifications at any time and are not to be used for contractual purposes.



[crystalcreekhomes.ca](http://crystalcreekhomes.ca)