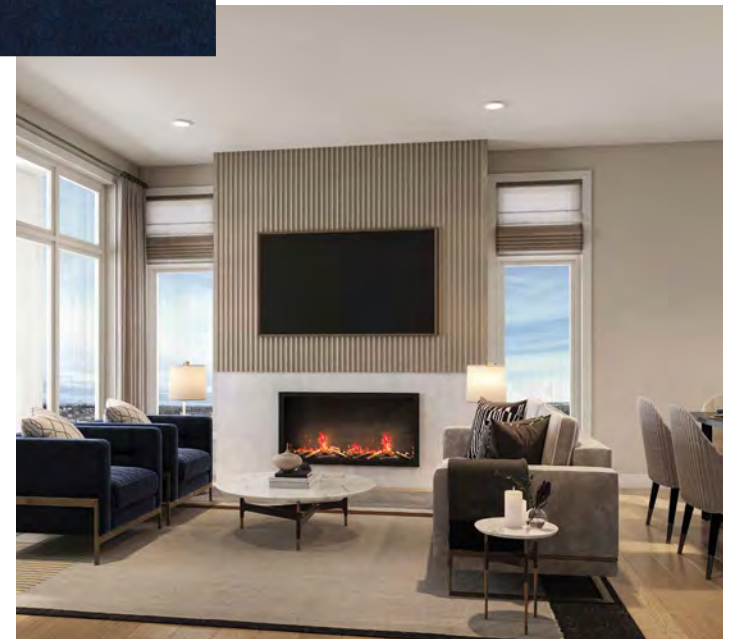
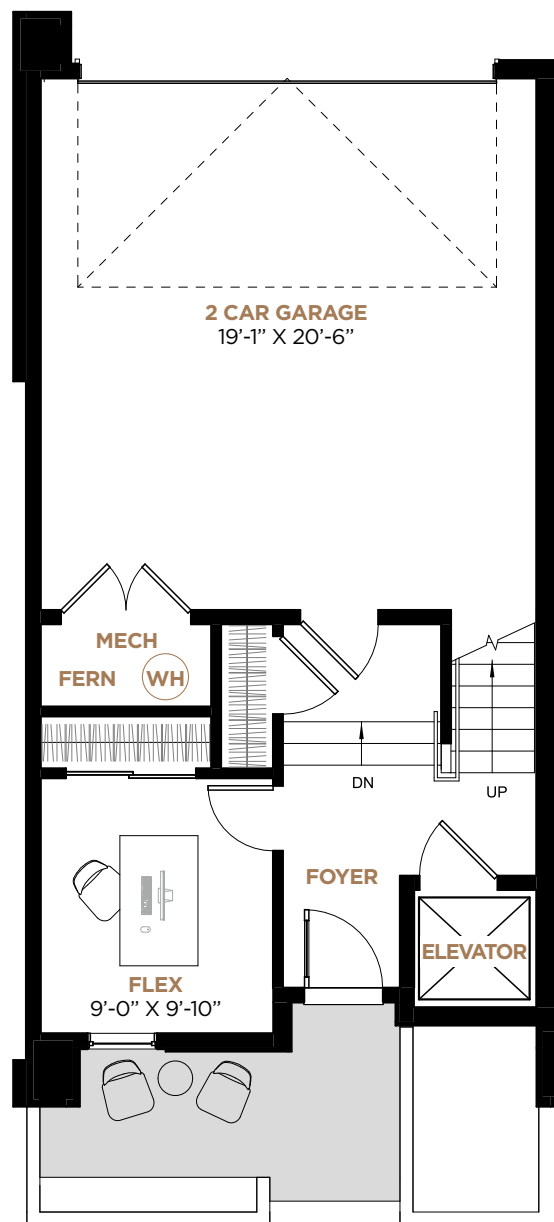


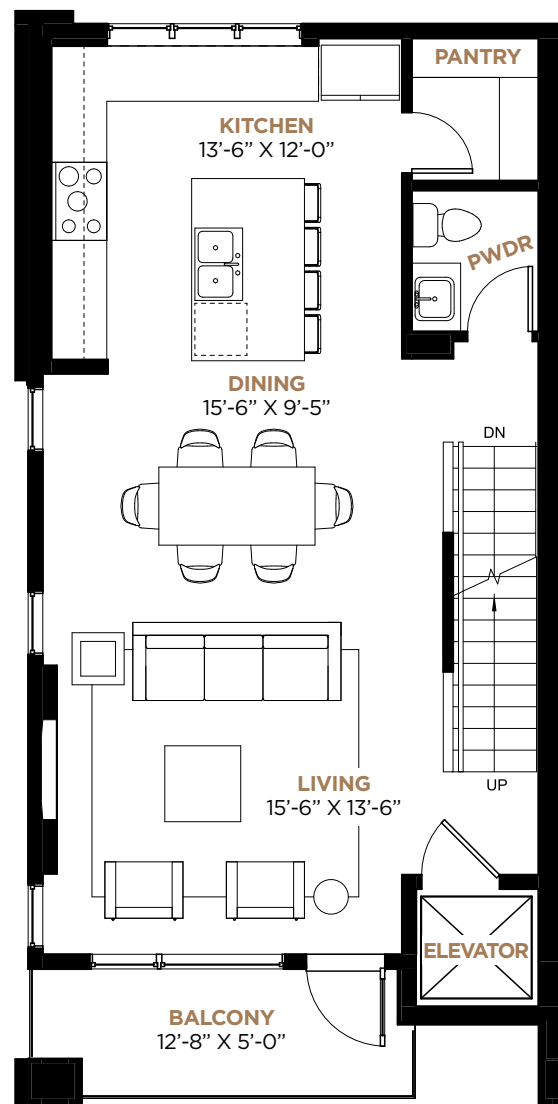
CRYSTAL CREEK
HOMES

University District Discovery Centre
Tuesday to Friday: 1 – 7 pm
Saturday, Sunday & Holidays: 12 – 5 pm
GUILD@crystalcreekhomes.ca

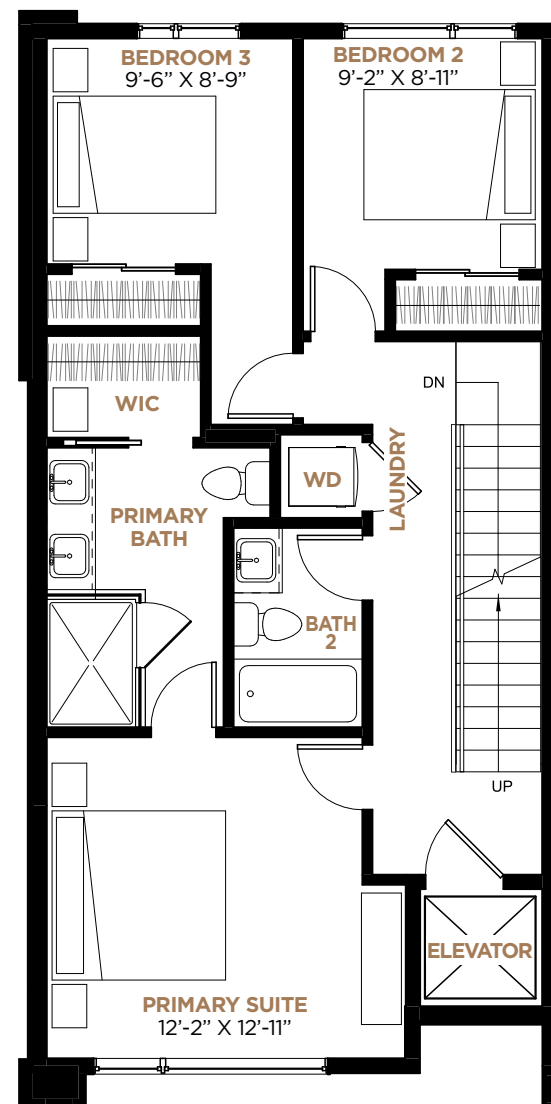




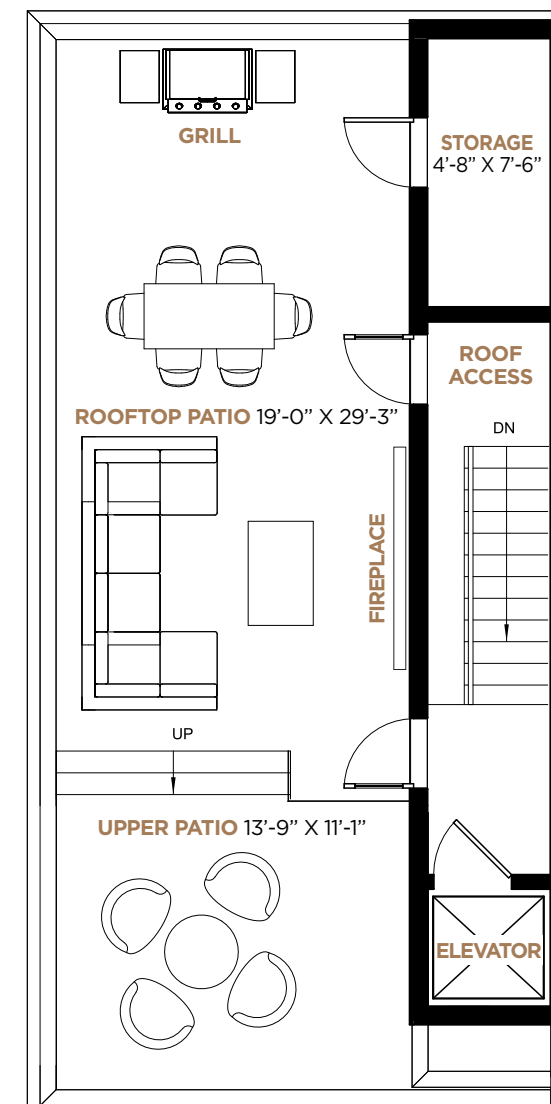
FIRST FLOOR + GARAGE 322 SQ. FT.



SECOND FLOOR 737 SQ. FT.



THIRD FLOOR 795 SQ. FT.



ROOFTOP PATIO 688 SQ. FT.

MAIN

Includes a double car garage with a versatile flex room on the main floor. The elevator access ensures that residents can easily move between floors with ease and without the need of stairs enhancing accessibility and convenience.

SECOND

Features a spacious open concept layout, seamlessly blending the kitchen, dining area and living room. High ceilings and large windows flood the space with natural light. Enjoy the convenience of a main floor balcony, ideal for effortless outdoor grilling.

THIRD

Features three bedrooms, and a spacious primary suite that boasts a serene atmosphere, with large windows. The ensuite is a sanctuary, featuring a spacious walk-in shower and dual vanity sinks.

PATIO

The private rooftop patios offer unparalleled views and amenities. With expansive space for lounging, dining and entertaining it's a haven for relaxation and social gatherings.