



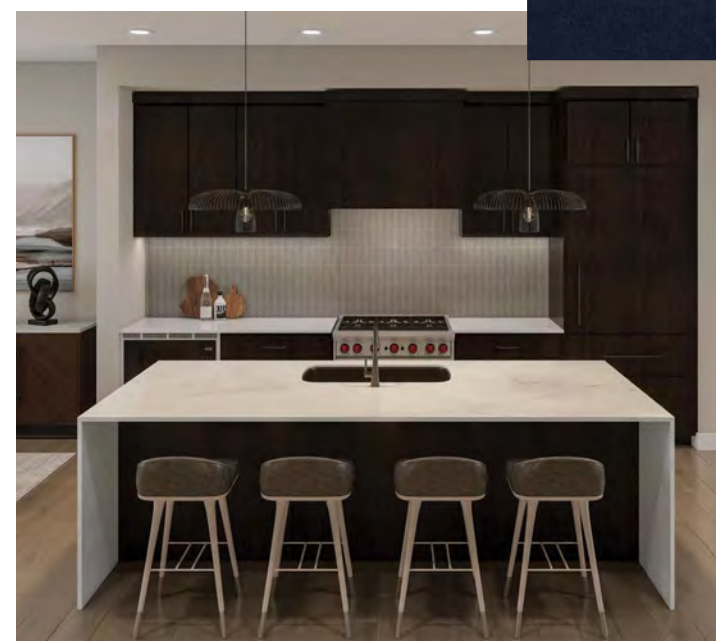
CRYSTAL CREEK
HOMES

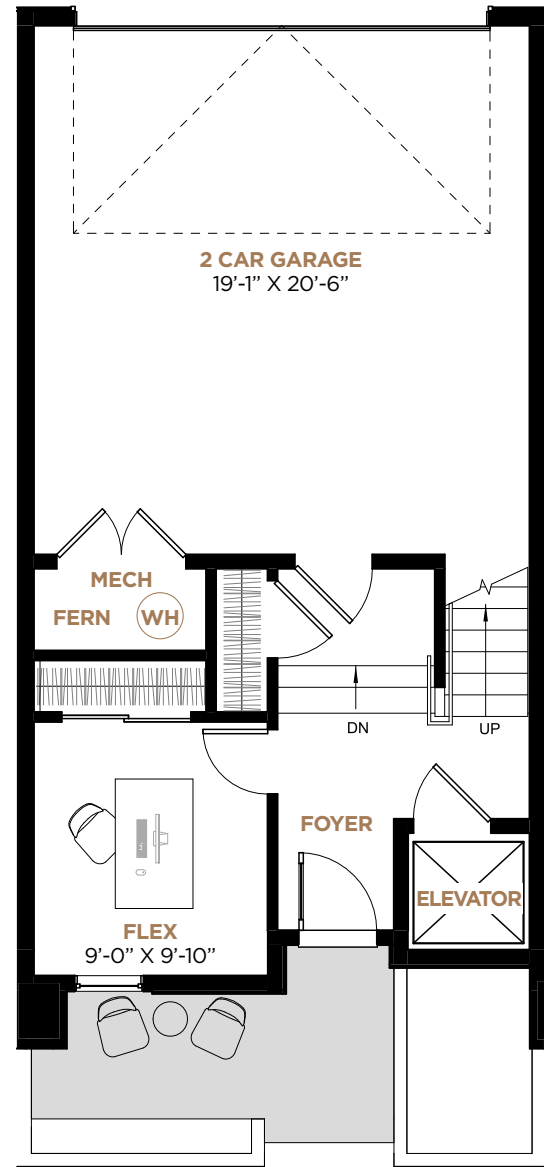
University District Discovery Centre
Tuesday to Friday: 1 – 7 pm
Saturday, Sunday & Holidays: 12 – 5 pm
GUILD@crystalcreekhomes.ca

UNIT 2

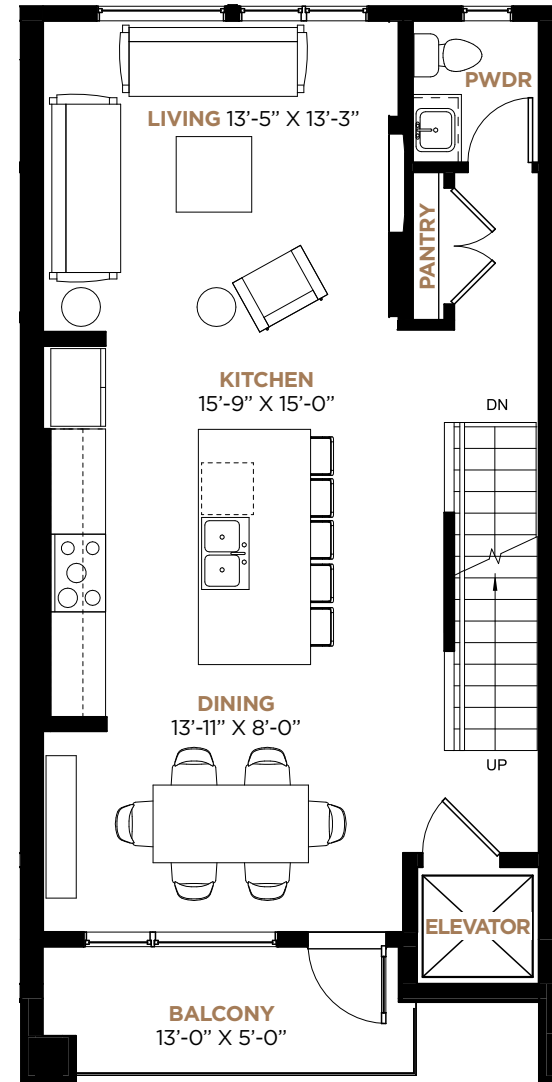


GUILD
BY CRYSTAL CREEK HOMES

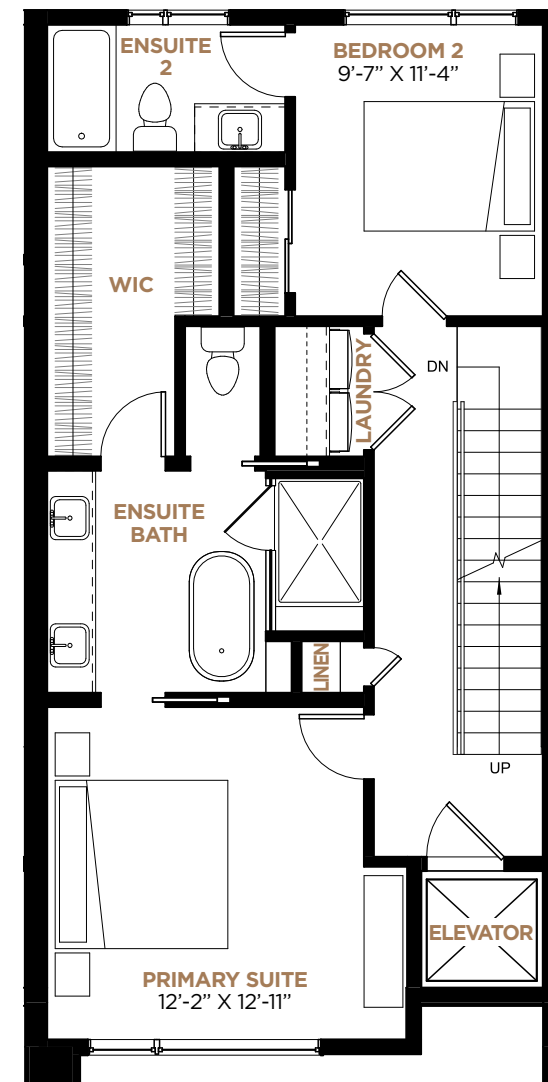




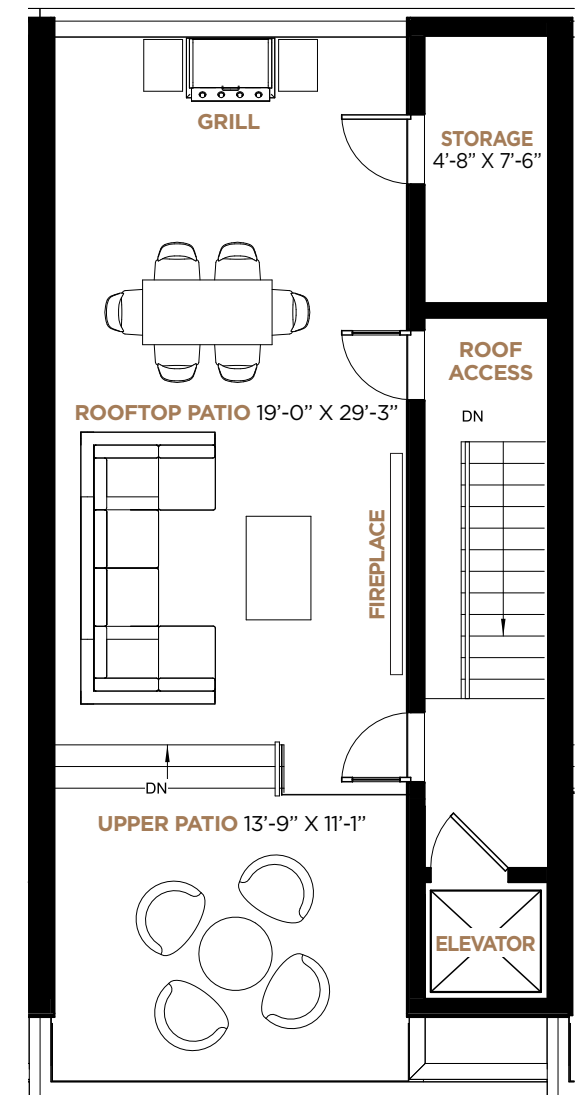
FIRST FLOOR + GARAGE 322 SQ. FT.



SECOND FLOOR 737 SQ. FT.



THIRD FLOOR 795 SQ. FT.



ROOFTOP PATIO 688 SQ. FT.

MAIN

Includes a double car garage with a versatile flex room on the main floor. The elevator access ensures that residents can easily move between floors with ease and without the need of stairs enhancing accessibility and convenience.

SECOND

Features a spacious open concept layout, seamlessly blending the kitchen, dining area and living room. High ceilings and large windows flood the space with natural light. Enjoy the convenience of a main floor balcony, ideal for effortless outdoor grilling.

THIRD

This two-bedroom upper floor is meticulously designed to maximize space and comfort. The primary suite includes luxurious touches such as walk-in closets, dual vanity sinks, and a lavish soaker tub and spacious shower.

PATIO

The private rooftop patio is a secluded oasis boasting a range of exclusive features and offers versatility and luxury. Enjoy breathtaking view of the skyline and enjoy ample space for lounging, dining and entertaining.