



CRYSTAL CREEK HOMES

**QUICK
POSSESSION**



The Archer

9 Watermark Lane

5799 SQFT

5 BEDROOMS | 4.5 BATHROOMS | 4 CAR TANDEM GARAGE | BASEMENT DEVELOPMENT (1602 SQ FT)



crystalcreekhomes.ca

The Archer

9 Watermark Lane

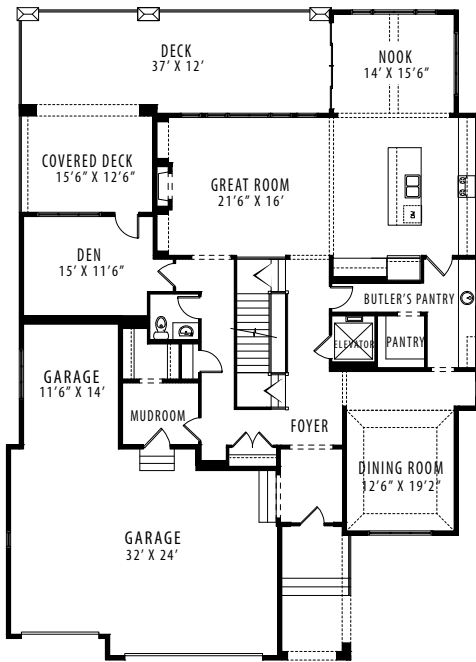
5799 SQFT



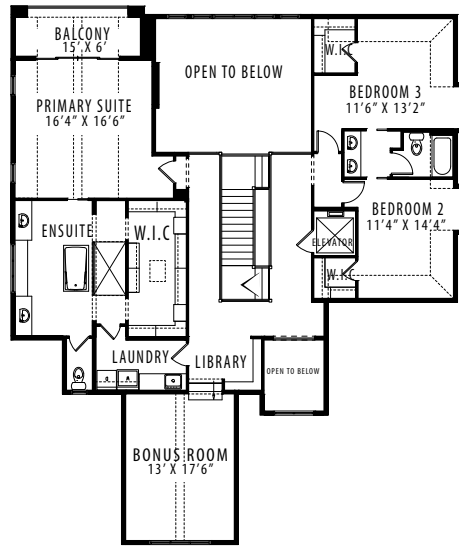
REAR ELEVATION

FRENCH COUNTRY

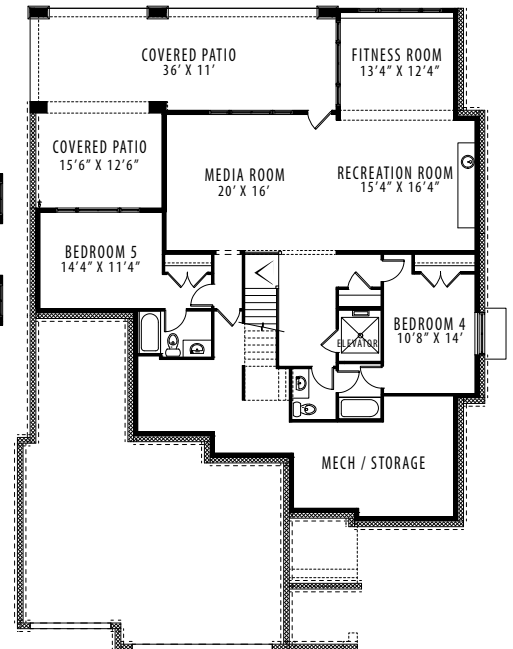
5 BEDROOMS | 4.5 BATHROOMS | 4 CAR TANDEM GARAGE | BASEMENT DEVELOPMENT (1602 SQ FT)



MAIN FLOOR | 2138 SQFT



UPPER FLOOR | 2059 SQFT



LOWER LEVEL | 1602 SQFT

Contact our sales team for more information: watermark@crystalcreekhomes.ca | 403-930-6388

All elevations, floorplans and dimensions are for illustrative purposes only and are intended to convey a concept and visualization of our homes. They are subject to modifications at any time and are not to be used for contractual purposes.



crystalcreekhomes.ca