



**QUICK  
POSSESSION**



## The Orchid

5412 - 69th Street

**1818** SQ FT

4 BEDROOMS | 3 BATHROOMS | SEPARATE SIDE ENTRANCE

*élan*

crystalcreekhomes.ca

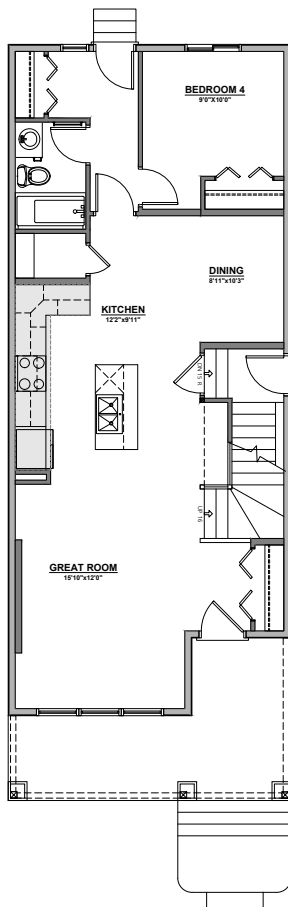
# The Orchid

5412 - 69th Street

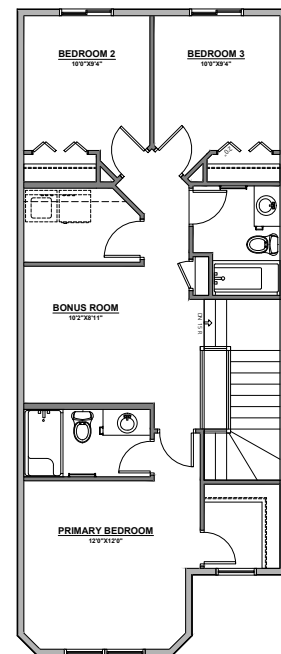
1818 SQ FT

4 BEDROOMS | 3 BATHROOMS | SEPARATE SIDE ENTRANCE

This home sits on an oversized east-facing lot with a detached garage, offering both space and convenience. Designed for versatility, it features a main floor bedroom and full bath, making it perfect for multi-generational living. A separate side entrance and a 9' basement provide future income potential, while the upgraded kitchen adds a touch of modern style and functionality.



MAIN FLOOR | 912 SQ FT



UPPER FLOOR | 906 SQ FT

Contact our sales team for more information: [elan@crystalcreekhomes.ca](mailto:elan@crystalcreekhomes.ca) | 780-702-6198

All elevations, floorplans and dimensions are for illustrative purposes only and are intended to convey a concept visualization of our homes. They are subject to modifications at any time and are not to be used for contractual purposes.



[crystalcreekhomes.ca](http://crystalcreekhomes.ca)