



## The Pine

7122 - 52nd Avenue

**1755** SQ FT

3 BEDROOMS | 2.5 BATHROOMS | OVERSIZED ATTACHED GARAGE

*élan*

crystalcreekhomes.ca

# The Pine

7122 - 52nd Avenue

1755 SQ FT

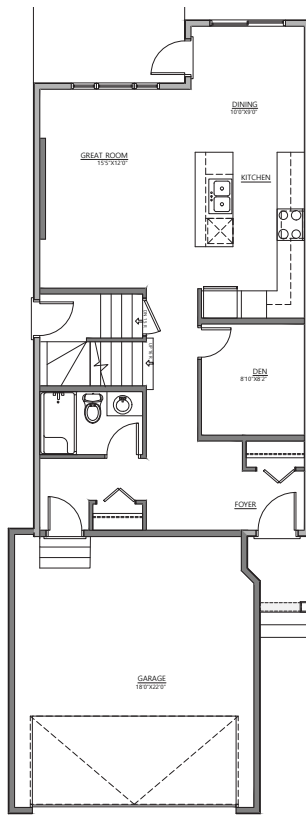
3 BEDROOMS | 2.5 BATHROOMS | OVERSIZED GARAGE



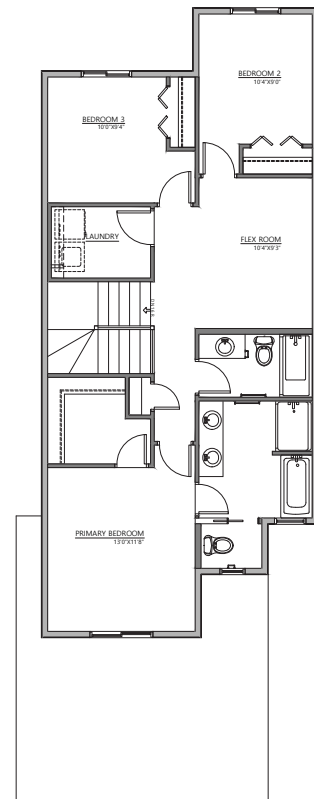
REAR ELEVATION

PRAIRIE

This home is perfectly situated in a prime location backing onto a walking trail and just steps away from parks. It has been thoughtfully elevated with premium details including an over-sized garage, 9' sunshine basement with a side entrance, upgraded kitchen, and a 5 piece ensuite in the primary retreat.



MAIN FLOOR | 842 SQ FT



UPPER FLOOR | 913 SQ FT

Contact our sales team for more information: [elan@crystalcreekhomes.ca](mailto:elan@crystalcreekhomes.ca) | 780-702-6198

All elevations, floorplans and dimensions are for illustrative purposes only and are intended to convey a concept visualization of our homes. They are subject to modifications at any time and are not to be used for contractual purposes.



[crystalcreekhomes.ca](http://crystalcreekhomes.ca)