



Wyatt

159 Belvedere Crescent

2238 SQ FT

4 BEDROOMS | 3 BATHROOMS | 2 CAR GARAGE

 BELVEDERE

crystalcreekhomes.ca

Wyatt

159 Belvedere Crescent

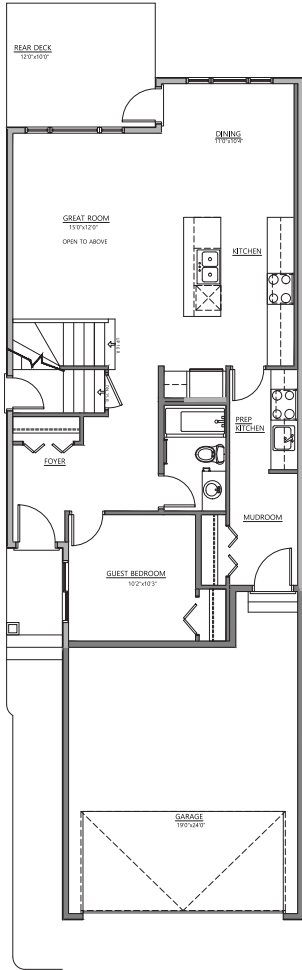
2238 SQ FT

4 BEDROOMS | 3 BATHROOMS | 2 CAR GARAGE

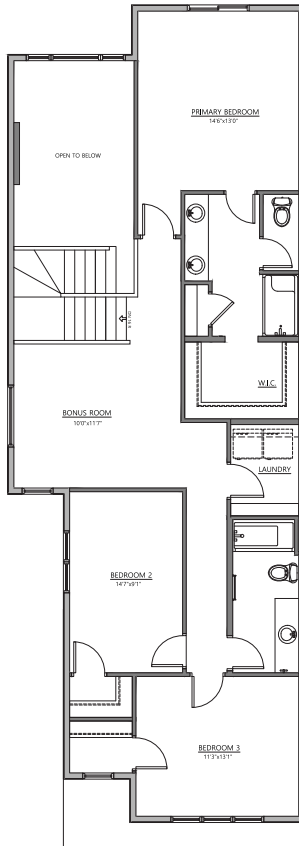


FRONT ELEVATION

CONTEMPORARY



MAIN FLOOR | 995 SQ FT



UPPER FLOOR | 1243 SQ FT



INTERIOR FINISHINGS | SIDNEY

Contact our sales team for more information: belvedere@crystalcreekhomes.ca | 403-984-3501

All elevations, floorplans and dimensions are for illustrative purposes only and are intended to convey a concept visualization of our homes. They are subject to modifications at any time and are not to be used for contractual purposes.



crystalcreekhomes.ca