



**QUICK  
POSSESSION**



# The Orchid

84 Penn Place

**1813** SQ FT

4 BEDROOMS | 3 BATHROOMS | SEPARATE SIDE ENTRANCE



**Prescott**

[crystalcreekhomes.ca](http://crystalcreekhomes.ca)

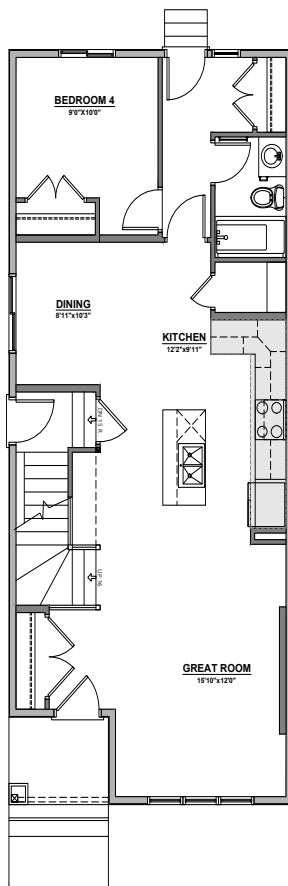
# The Orchid

84 Penn Place

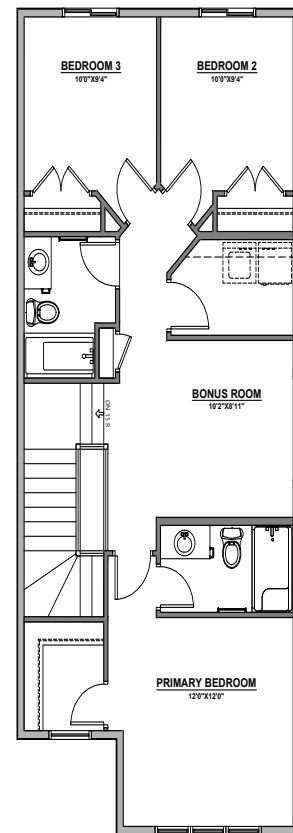
**1813** SQ FT

4 BEDROOMS | 3 BATHROOMS | SEPARATE SIDE ENTRANCE

This beautifully designed home features a main floor bedroom with full bath, perfect for guests or multi-generational living. Enjoy future development potential with a 9' basement and convenient side entrance, plus a triple car garage situated on an oversized pie lot—offering extra space inside and out.



MAIN FLOOR | 912 SQ FT



UPPER FLOOR | 901 SQ FT

Contact our sales team for more information: [prescott@crystalcreekhomes.ca](mailto:prescott@crystalcreekhomes.ca) | 780-702-6190

All elevations, floorplans and dimensions are for illustrative purposes only and are intended to convey a concept visualization of our homes. They are subject to modifications at any time and are not to be used for contractual purposes.



[crystalcreekhomes.ca](http://crystalcreekhomes.ca)