



# The Orchid

86 Penn Place

**1813** SQ FT

4 BEDROOMS | 3 BATHROOMS | SEPARATE SIDE ENTRANCE



**Prescott**

[crystalcreekhomes.ca](http://crystalcreekhomes.ca)

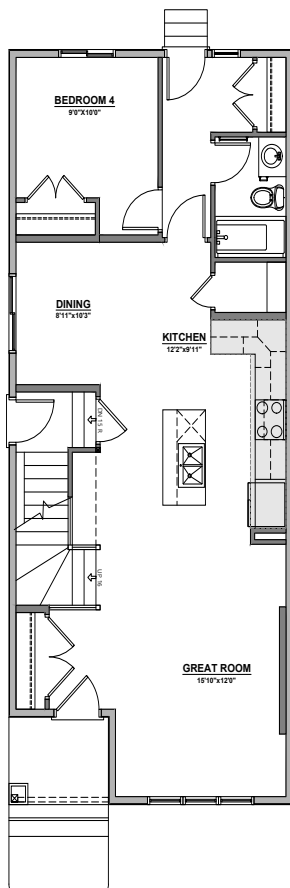
# The Orchid

86 Penn Place

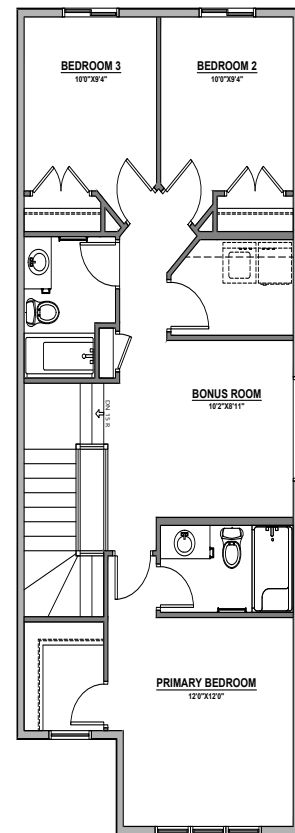
**1813** SQ FT

4 BEDROOMS | 3 BATHROOMS | SEPARATE SIDE ENTRANCE

Designed for modern living, this home offers a main floor bedroom with full bathroom, ideal for guests or extended family. The upgraded kitchen is perfect for everyday living and entertaining, while the 9' basement with side entrance opens the door to future development. Complete with a triple car garage and located on an oversized pie lot, there's room to grow inside and out.



MAIN FLOOR | 912 SQ FT



UPPER FLOOR | 901 SQ FT

Contact our sales team for more information: [prescott@crystalcreekhomes.ca](mailto:prescott@crystalcreekhomes.ca) | 780-702-6190

All elevations, floorplans and dimensions are for illustrative purposes only and are intended to convey a concept visualization of our homes. They are subject to modifications at any time and are not to be used for contractual purposes.



[crystalcreekhomes.ca](http://crystalcreekhomes.ca)