



**QUICK  
POSSESSION**



This rendering is for illustrative purposes only and is not a direct representation of the home.

## The Dahlia

7121 - 52nd Avenue

**1552** SQ FT

3 BEDROOMS | 2.5 BATHROOMS | SEPARATE SIDE ENTRANCE

*élan*

crystalcreekhomes.ca

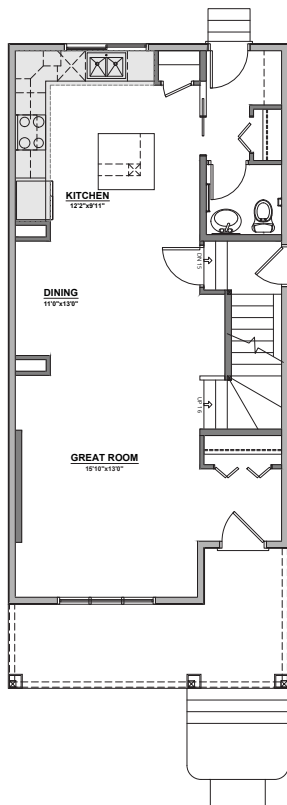
# The Dahlia

7121 - 52nd Avenue

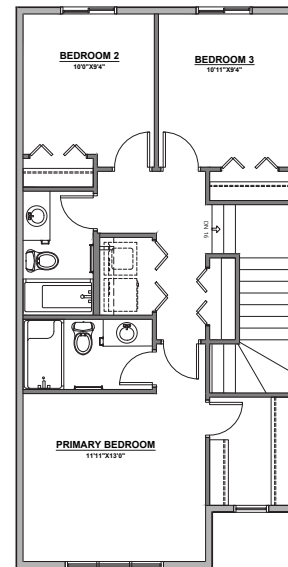
1552 SQ FT

3 BEDROOMS | 2.5 BATHROOMS | SEPARATE SIDE ENTRANCE

Welcome home to The Dahlia — a thoughtfully designed 3-bedroom, 2.5-bath home that blends charm and practicality. From the welcoming front porch to the open-concept main floor, every detail is crafted for comfort and connection. Upstairs, enjoy the convenience of a central laundry room and spacious bedrooms, including a well-appointed primary suite. This home also includes a separate side entrance and a 9' basement ceiling, offering future development potential or multigenerational living flexibility. Located in the vibrant community of Elan, The Dahlia offers the perfect balance of style, function, and everyday ease.



MAIN FLOOR | 776 SQ FT



UPPER FLOOR | 776 SQ FT

Contact our sales team for more information: [elan@crystalcreekhomes.ca](mailto:elan@crystalcreekhomes.ca) | 780-702-6198

All elevations, floorplans and dimensions are for illustrative purposes only and are intended to convey a concept visualization of our homes. They are subject to modifications at any time and are not to be used for contractual purposes.



[crystalcreekhomes.ca](http://crystalcreekhomes.ca)