



CONTACT | [JuniperRidge@crystalcreekhomes.ca](mailto:JuniperRidge@crystalcreekhomes.ca) | [JuniperRidgeVillas.ca](http://JuniperRidgeVillas.ca)



# JUNIPER RIDGE VILLAS

BY CRYSTAL CREEK HOMES

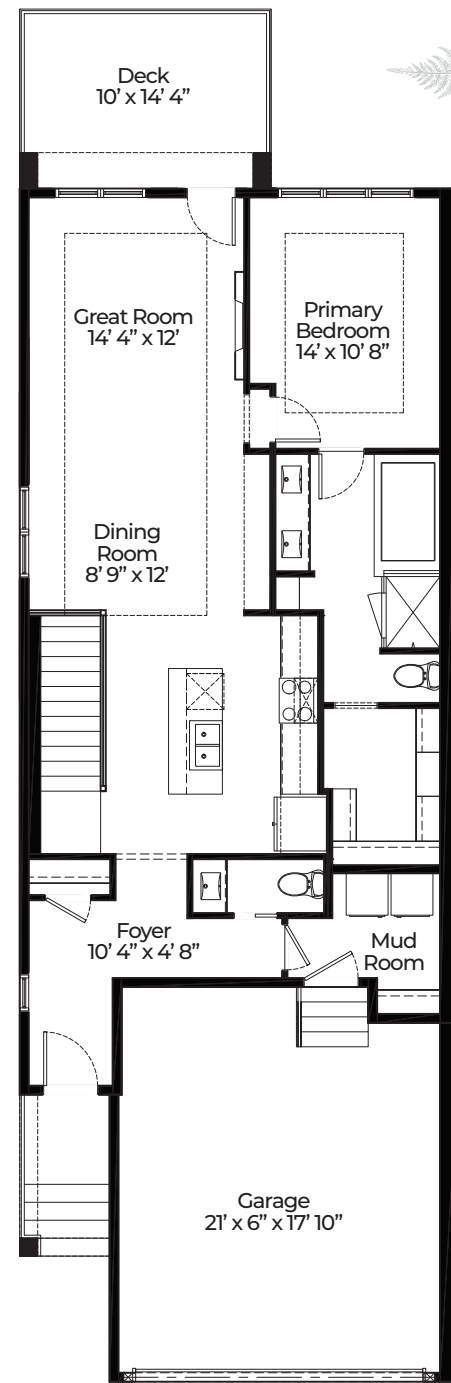


THE FERN VILLA | 24' WIDE

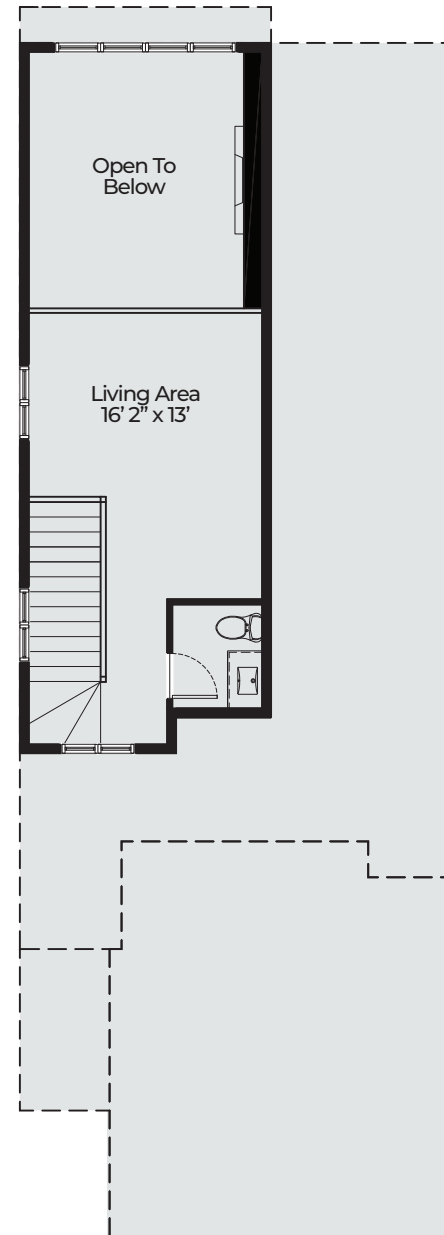




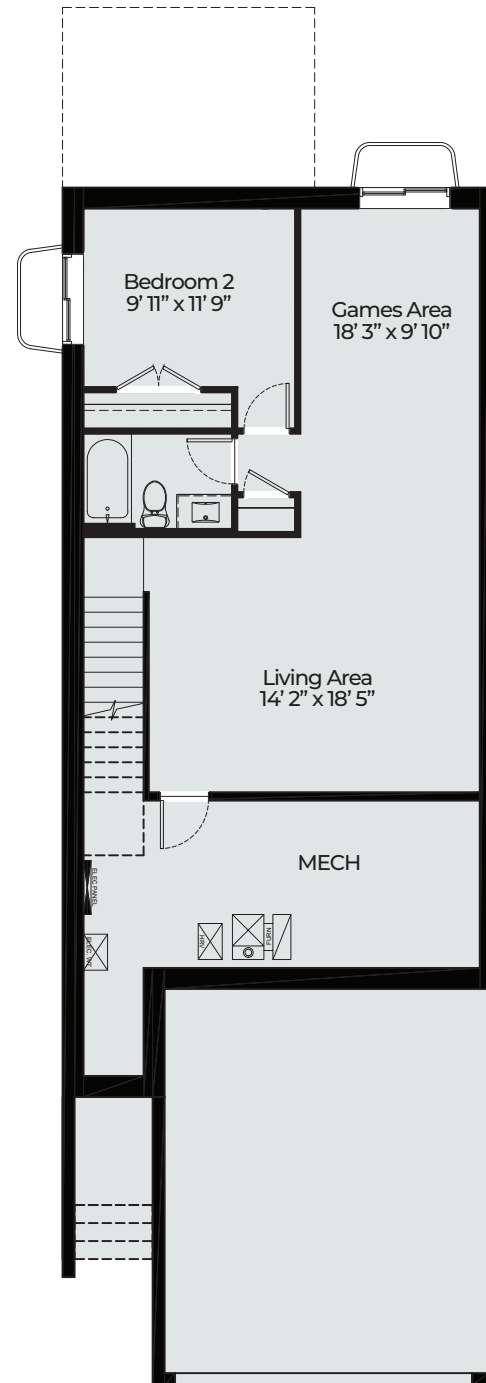
# THE FERN VILLA | 24' WIDE



MAIN FLOOR | 1111 SQ. FT.



OPTIONAL LOFT | 340 SQ. FT.



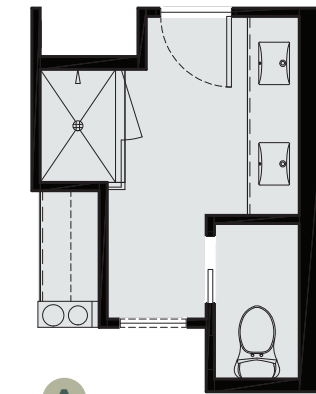
OPTIONAL BASEMENT | 711 SQ. FT.

## OPTIONS AVAILABLE

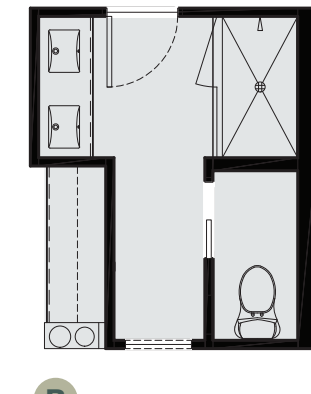
3 ensuite options | 2 mudroom options | 4 loft options  
2 basement options with and without walkouts  
2 basement suites with and without walkouts

### ENSUITE OPTIONS

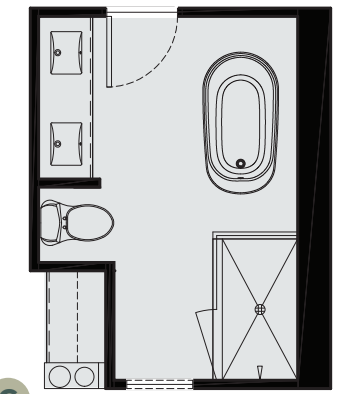
Every household is unique and your ensuite should be, too. Our range of layout options are designed to adapt to your lifestyle, offering the comfort and functionality you need, exactly where you need it.



A



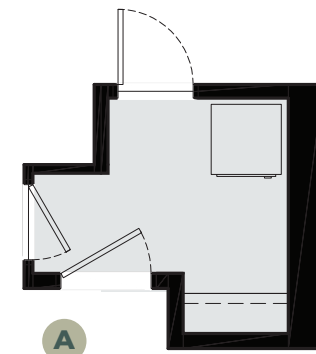
B



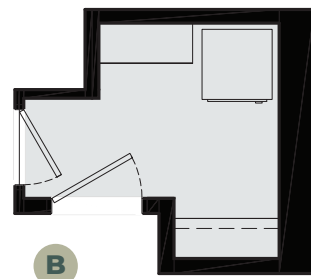
C

### MUDROOM OPTIONS

We offer two mudroom layout options designed to complement how you come and go. Whether you're juggling groceries, gear, or everyday essentials, choose the setup that best suits your lifestyle.



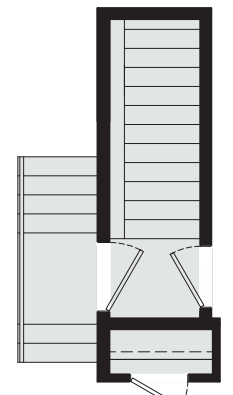
A



B

### SIDE ENTRANCE OPTION

Optional side entrance provides added privacy and flexibility for a separate suite.



Discover the ease of single-level living at Juniper Ridge Villas, thoughtfully designed for comfort and style. This spacious villa features a large primary suite with a private ensuite, along with open-concept kitchen, living, and dining areas perfect for relaxed living or entertaining. It's a refined blend of simplicity, sophistication, and everyday ease.

