



CONTACT | JuniperRidge@crystalcreekhomes.ca | JuniperRidgeVillas.ca



JUNIPER RIDGE VILLAS

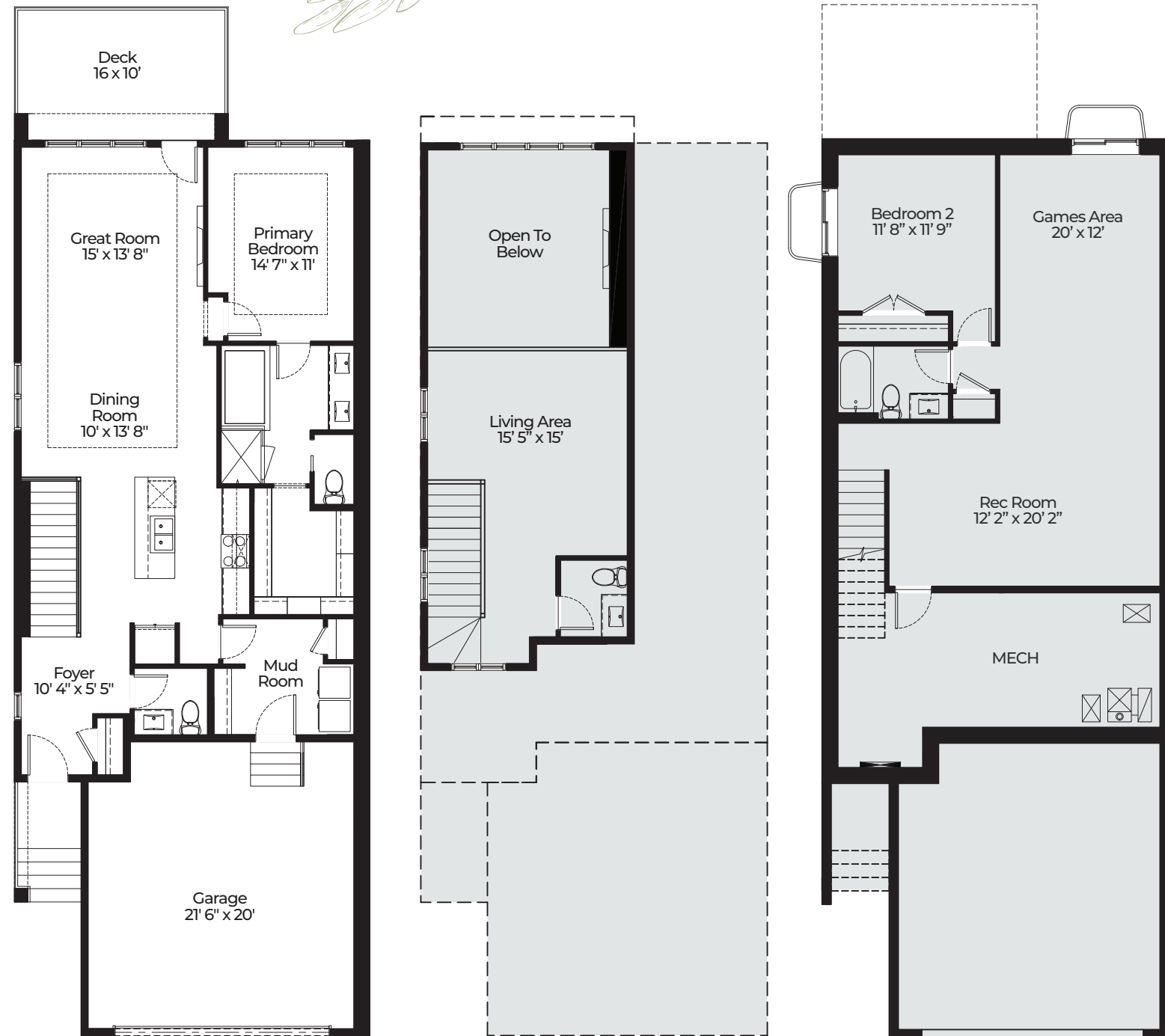
BY CRYSTAL CREEK HOMES



THE **SAGE VILLA** | 26' WIDE



THE SAGE VILLA | 26' WIDE



MAIN FLOOR | 1196 SQ. FT.

OPTIONAL LOFT | 386 SQ. FT.

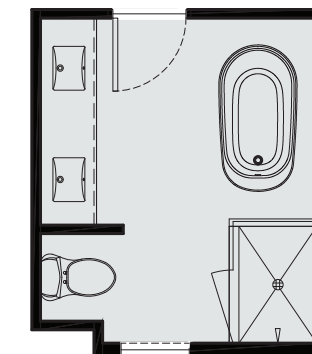
OPTIONAL BASEMENT | 777 SQ. FT.

OPTIONS AVAILABLE

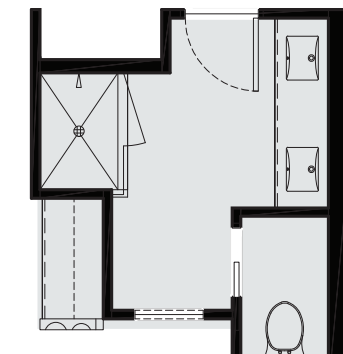
3 ensuite options | 2 mudroom options | 4 loft options
2 basement options with and without walkouts
2 basement suites with and without walkouts

ENSUITE OPTIONS

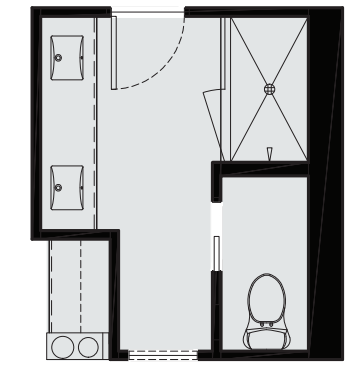
Every household is unique and your ensuite should be, too. Our range of layout options are designed to adapt to your lifestyle, offering the comfort and functionality you need, exactly where you need it.



A



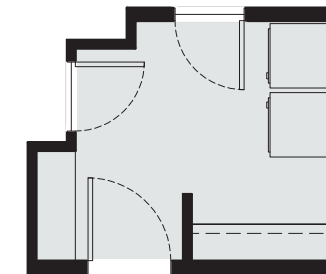
B



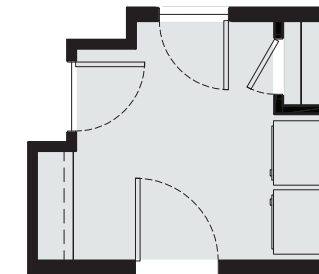
C

MUDROOM OPTIONS

We offer two mudroom layout options designed to complement how you come and go. Whether you're juggling groceries, gear, or everyday essentials, choose the setup that best suits your lifestyle.



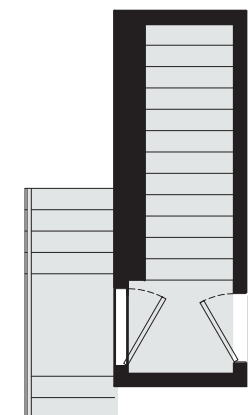
A



B

SIDE ENTRANCE OPTION

Optional side entrance provides added privacy and flexibility for a separate suite.



Experience the perfect balance of elegance and ease in this beautifully crafted single-level villa. With a spacious primary suite, a well-appointed ensuite, and bright, open living areas that connect seamlessly from kitchen to dining, this home is designed for comfortable, everyday living. Thoughtful details and timeless design make it a place you'll love to come home to.

