



**QUICK  
POSSESSION**



# The Maple

5107-71st Street      **2006** SQ FT

3 BEDROOMS | 3 BATHROOMS | DOUBLE CAR GARAGE

*élan*

crystalcreekhomes.ca

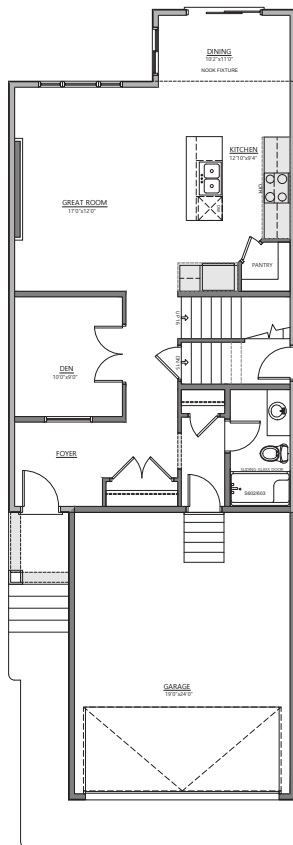
# The Maple

5107-71st Street

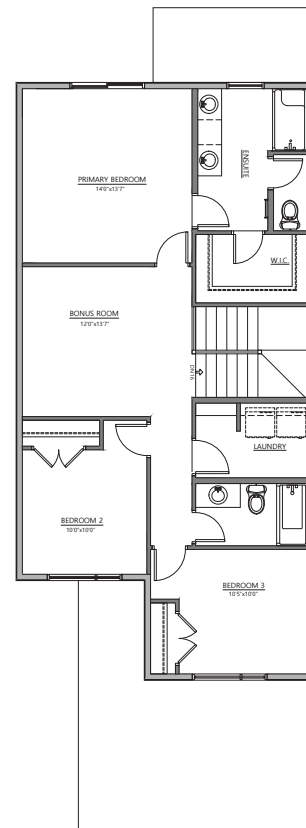
2006 SQ FT

3 BEDROOMS | 3 BATHROOMS | DOUBLE CAR GARAGE

Discover the Maple in Elan — a 2,006 sq. ft. home thoughtfully designed for today's modern families. With 3 bedrooms and 3 full bathrooms—one paired with a main floor den—this layout offers exceptional flexibility for multigenerational living. Whether you're welcoming extended family or guests, everyone will enjoy the space and comfort they need. Open-concept living, contemporary finishes, and a smart, functional layout make the Maple a truly versatile and inviting place to call home. The Maple is a standout choice in the thriving community of Elan.



MAIN FLOOR | 936 SQ FT



UPPER FLOOR | 1070 SQ FT

Contact our sales team for more information: [elan@crystalcreekhomes.ca](mailto:elan@crystalcreekhomes.ca) | 780-702-6198

All elevations, floorplans and dimensions are for illustrative purposes only and are intended to convey a concept visualization of our homes. They are subject to modifications at any time and are not to be used for contractual purposes.



[crystalcreekhomes.ca](http://crystalcreekhomes.ca)