



# CRYSTAL CREEK HOMES



## The Orchid

5418-69th Street

**1813** SQ FT

4 BEDROOMS | 3 BATHROOMS | SEPARATE SIDE ENTRANCE

*élan*

crystalcreekhomes.ca

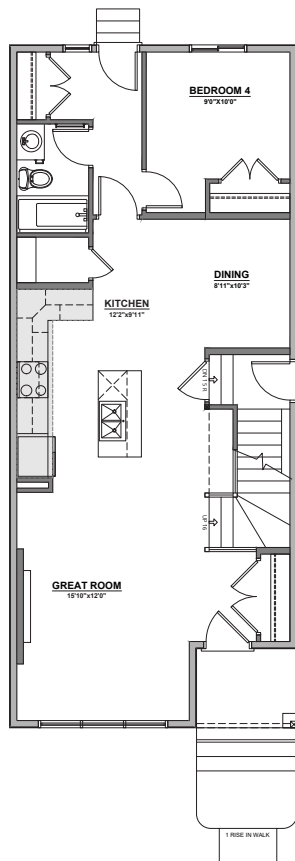
# The Orchid

5418-69th Street

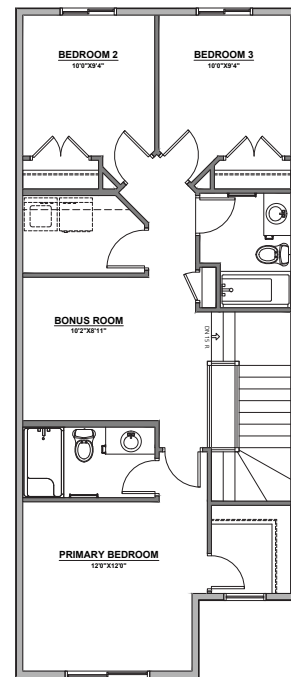
**1813** SQ FT

4 BEDROOMS | 3 BATHROOMS | SEPARATE SIDE ENTRANCE

The Orchid offers over 1,800 sq. ft. of thoughtfully designed living space, featuring 4 bedrooms, 3 full bathrooms, and a layout that adapts to your family's needs. With a separate side entrance and 9' basement ceilings, this home is ideal for future development or multigenerational living. The upper floor includes a spacious bonus room, convenient laundry, and well-sized bedrooms for ultimate comfort. Blending functionality with modern design, the Orchid is the perfect fit for life in the dynamic community of Elan.



MAIN FLOOR | 912 SQ FT



UPPER FLOOR | 901 SQ FT

Contact our sales team for more information: [elan@crystalcreekhomes.ca](mailto:elan@crystalcreekhomes.ca) | 780-702-6198

All elevations, floorplans and dimensions are for illustrative purposes only and are intended to convey a concept visualization of our homes. They are subject to modifications at any time and are not to be used for contractual purposes.



[crystalcreekhomes.ca](http://crystalcreekhomes.ca)