



CRYSTAL CREEK
HOMES

**QUICK
POSSESSION**



The Somerton

386 Bessborough Drive SW

4536 SQFT

5 BEDROOMS | 4.5 BATHROOMS | 3 CAR GARAGE | BASEMENT DEVELOPEMENT (1102 SQFT)



crystalcreekhomes.ca

The Somerton

386 Bessborough Drive SW

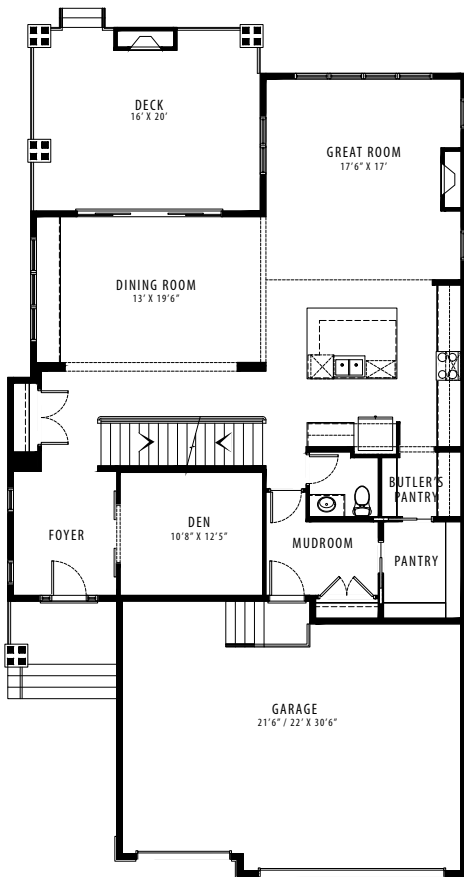
4536 SQFT

5 BEDROOMS | 4.5 BATHROOMS | 3 CAR GARAGE | BASEMENT DEVELOPEMENT

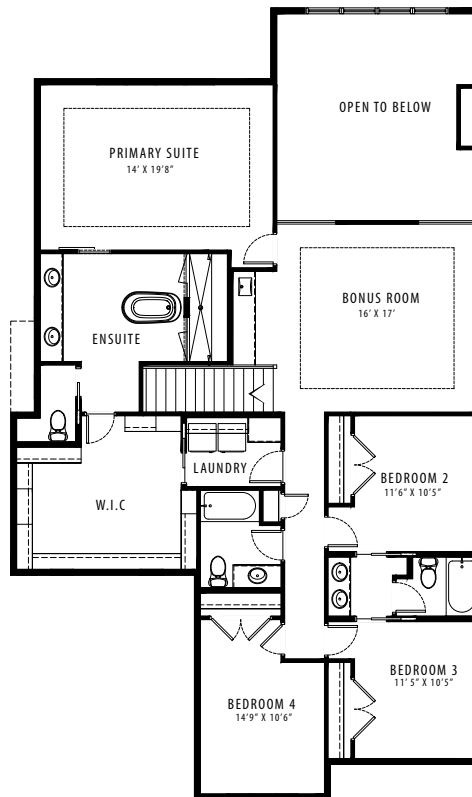


REAR ELEVATION

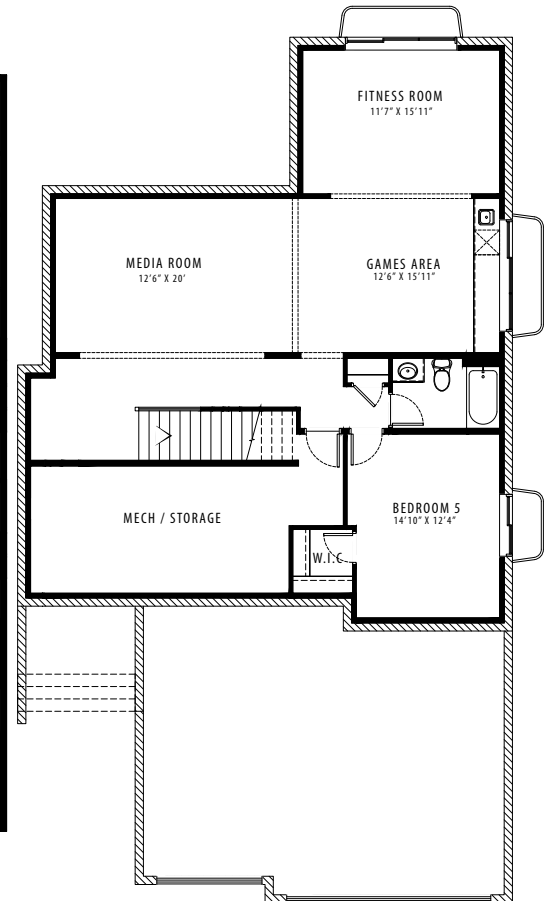
CRAFTSMAN



MAIN FLOOR | 1574 SQFT



UPPER FLOOR | 1860 SQFT



LOWER LEVEL | 1102 SQFT

Contact our sales team for more information: currie@crystalcreekhomes.ca | 403-452-3571

All elevations, floorplans and dimensions are for illustrative purposes only and are intended to convey a concept and visualization of our homes. They are subject to modifications at any time and are not to be used for contractual purposes.



crystalcreekhomes.ca