



CRYSTAL CREEK
HOMES

**QUICK
POSSESSION**



The Rosemont

378 Bessborough Drive SW

4337 SQFT

5 BEDROOMS | 4 BATHROOMS | 3 CAR GARAGE | BASEMENT DEVELOPEMENT (1094 SQFT)



crystalcreekhomes.ca

The Rosemont

378 Bessborough Drive SW

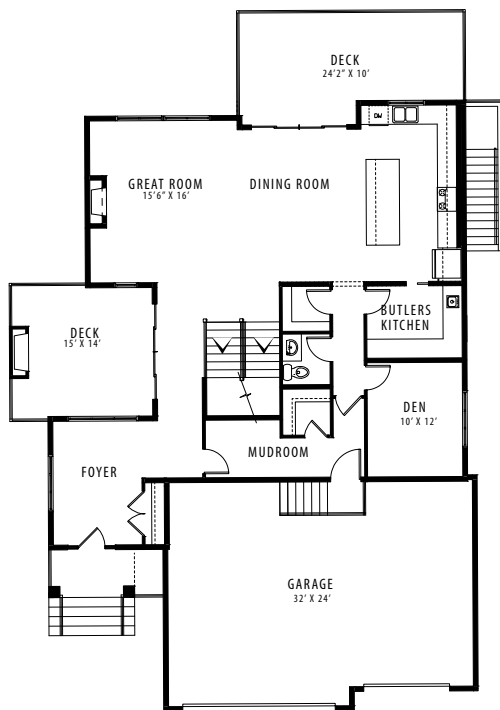
4337 SQFT

5 BEDROOMS | 4 BATHROOMS | 3 CAR GARAGE | BASEMENT DEVELOPMENT

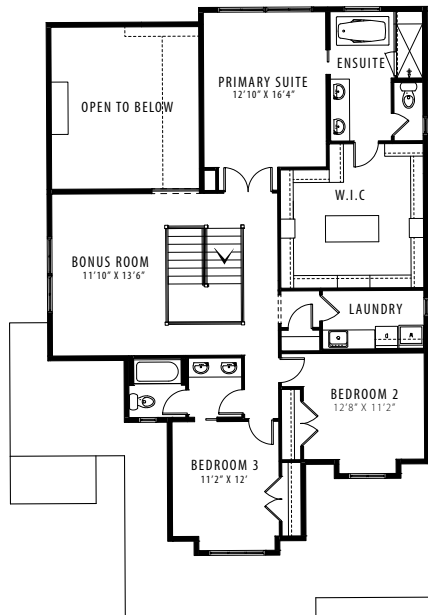


REAR ELEVATION

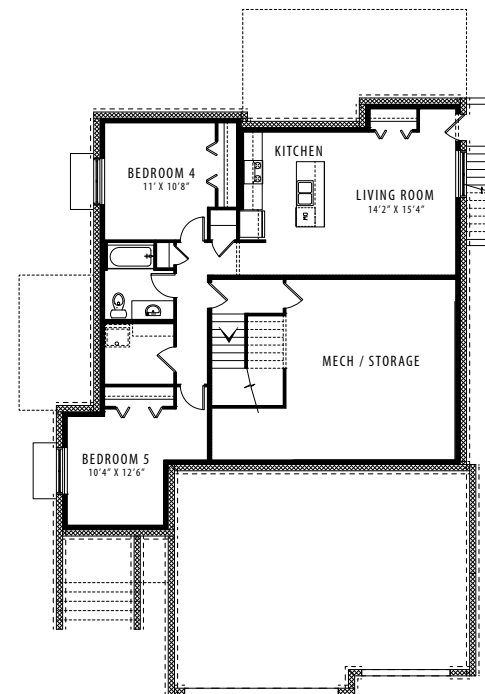
MODERN FARMHOUSE



MAIN FLOOR | 1567 SQFT



UPPER FLOOR | 1676 SQFT



LOWER LEVEL | 1094 SQFT

Contact our sales team for more information: currie@crystalcreekhomes.ca | 403-452-3571

All elevations, floorplans and dimensions are for illustrative purposes only and are intended to convey a concept and visualization of our homes. They are subject to modifications at any time and are not to be used for contractual purposes.



crystalcreekhomes.ca