

# Committed to giving back and building a brighter future together.



Crystal Creek Homes is a proud partner of the Calgary Health Foundation Hospital Home Lottery supporting Women's Health in the Calgary community.

We are honored to be the builder of the Grand Prize Showhome in the community of Watermark and to give back to the Calgary community. All Crystal Creek Homes are constructed on a foundation rooted in passion, innovation, and quality and we are committed to delivering exceptional craftsmanship in every home we build.

Over the past 21 years, we've welcomed over 1,000 delighted homeowners into our communities. None of this would have been possible without our dedicated staff, exceptional professional associates, industry partners, trades, and suppliers. With award-winning designs, a commitment to building quality homes, and unwavering client satisfaction, we don't just build homes; we build thriving communities.



## Explore our award-winning home designs in our premier communities.

Aspen Woods Estates | Belvedere | Currie | Guild Townhomes at University District | Legacy  
Heritage Crossing | Hudson in Pine Creek | Juniper Ridge Villas at Taza Park  
Pine Creek Villas at Heritage Pointe | Richmond Luxe Townhomes | Rockland Park  
Upper Greenwich | Watermark at Bearspaw



[connect@crystalcreekhomes.ca](mailto:connect@crystalcreekhomes.ca) | [crystalcreekhomes.ca](https://crystalcreekhomes.ca)



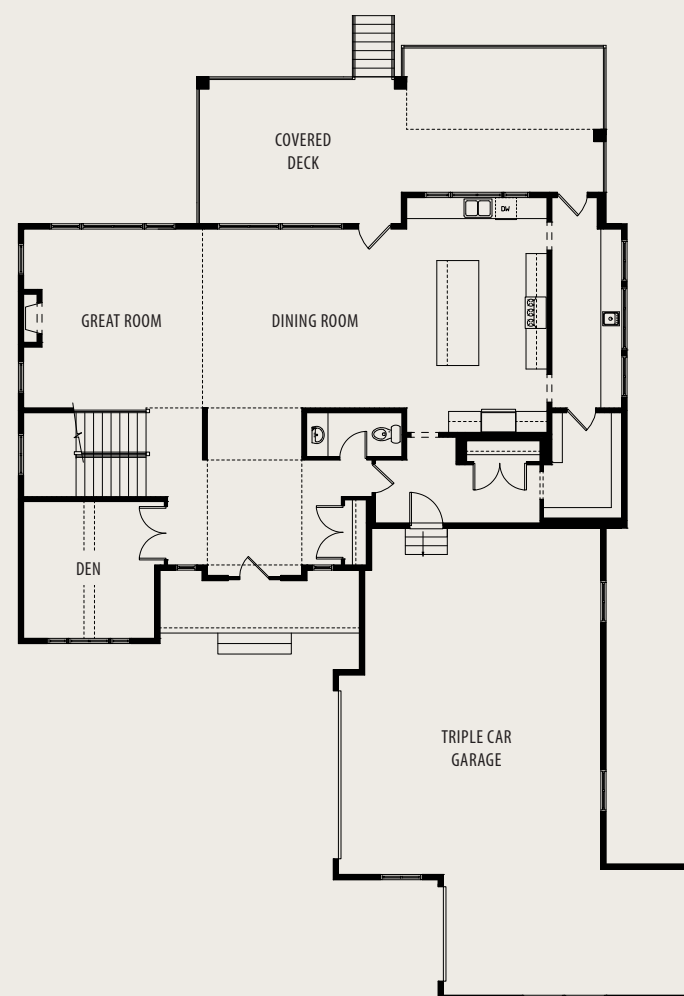
# WELCOME

TO THE FALL 2025 HOSPITAL HOME  
LOTTERY GRAND PRIZE SHOWHOME

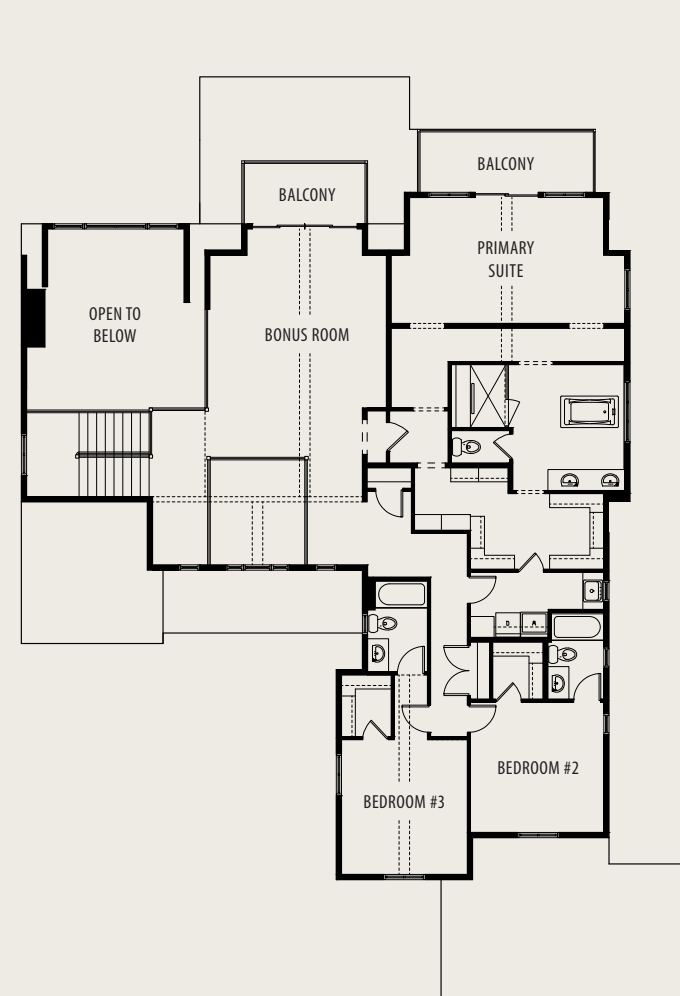




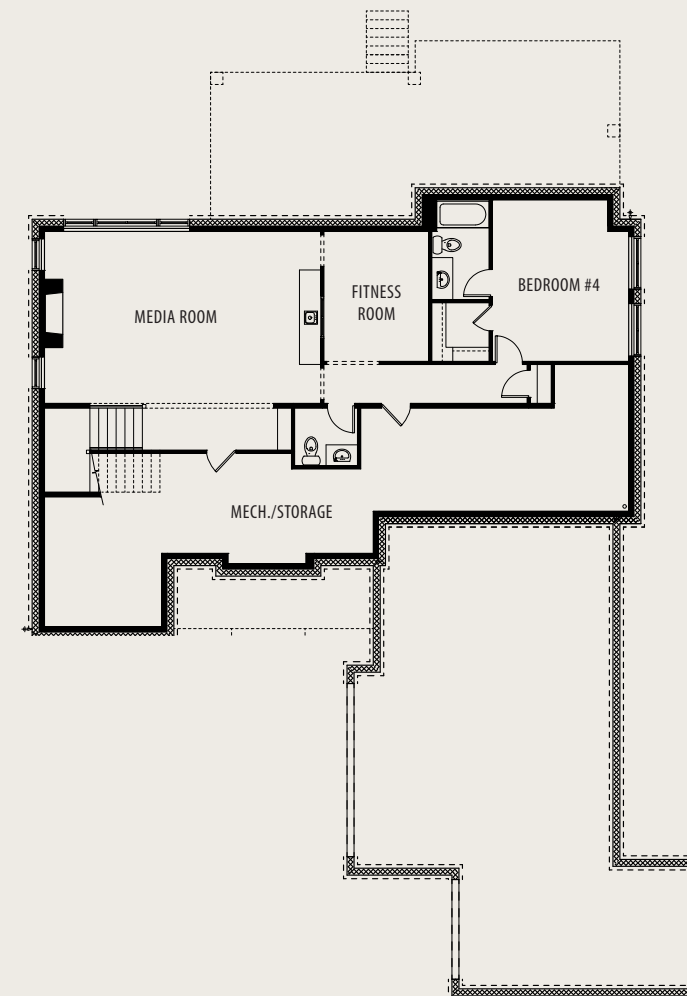
# GRAND PRIZE SHOWHOME



MAIN FLOOR PLAN | 1980 SQ.FT.



UPPER FLOOR PLAN | 2072 SQ.FT.



LOWER LEVEL PLAN | 1197 SQ.FT.



## IT'S YOUR FIRST STEP INTO A LIFE OF LUXURY.

Experience Unparalleled Luxury in Watermark at Bearspaw.

Nestled in the prestigious community of Watermark at Bearspaw, this 5,249 sq. ft. architectural masterpiece sets a new standard for refined living.

At its heart lies an oversized, chef-inspired kitchen, complete with a private butler's pantry tucked behind elegant archways, an exquisite space designed to entertain and impress. Three outdoor patios invite you to immerse yourself in the community's serene natural beauty, while the soaring 21-foot ceilings and two-storey fireplace in the great room create an atmosphere of grand elegance. The primary suite is a true sanctuary, featuring a spa-like ensuite with a walk-in shower, indulgent soaker tub, and a custom walk-in closet. The lower level offers a private fitness retreat, ensuring your wellness routine is as elevated as your lifestyle.

This is more than a home, it's a statement of timeless luxury.



5,249 Sq. Ft.

4 Bedrooms

Fitness Room

Dream Kitchen

R E D E F I N I N G L U X U R Y L I V I N G