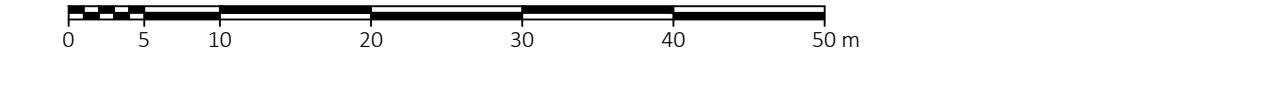


Proposed Plan of
Building Units 1 to 94 (Inclusive)
 within S.E.1/4 Sec.36, Tp.23, R.2, W.5.M.
 Tsuu T'ina Nation 145
 Province of Alberta
 Scale 1:500



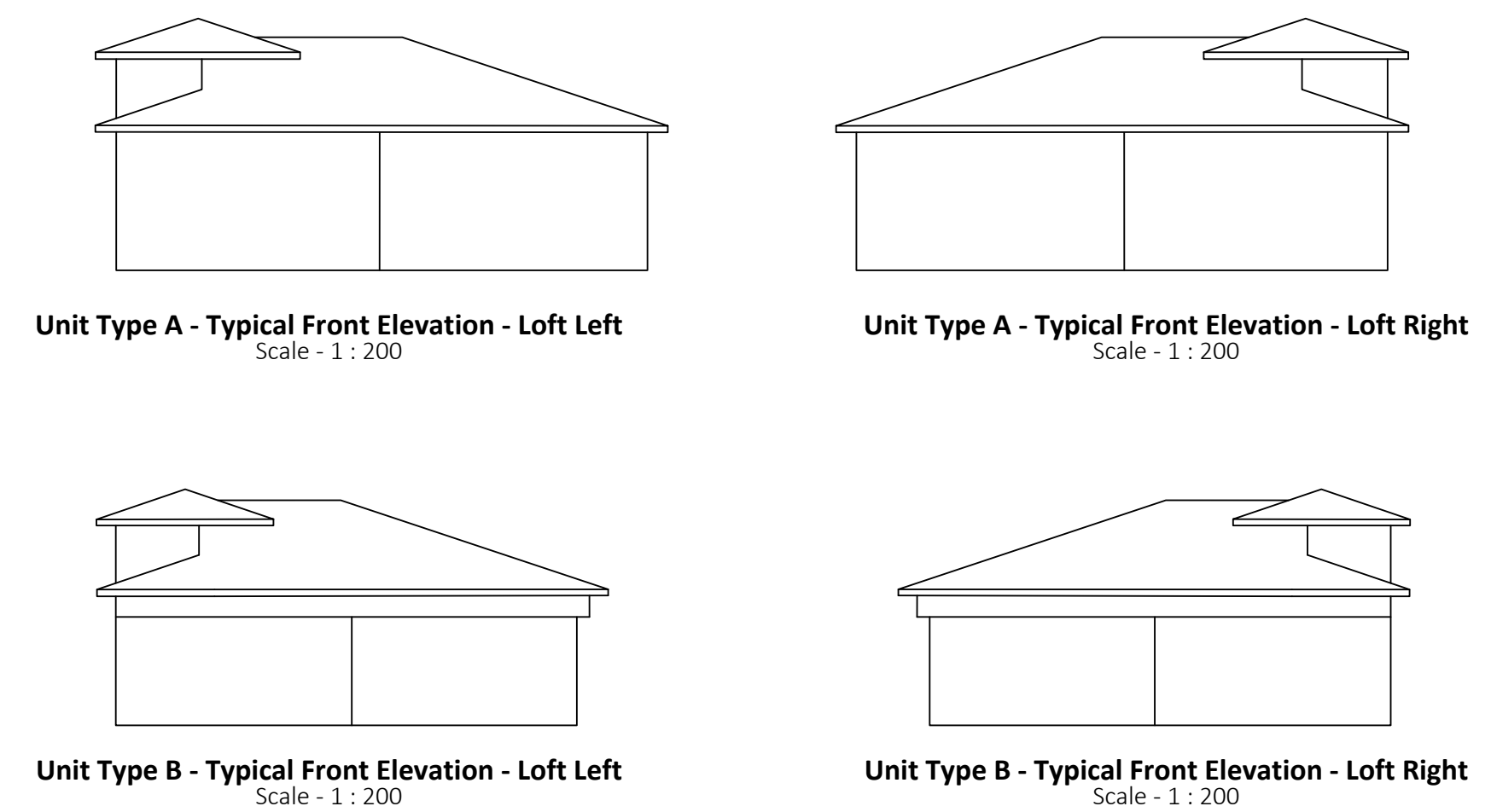
The plot size that will provide true scale and optimum readability for this plan is 1216 mm by 762 mm.
 This survey was executed on the date of March 21st, 2025 by Michael A. Thompson, C.L.S.

LEGEND:
 Copied surveyed monuments as shown on Plan 114060 CLSR shown thus: □
 Building units dealt with by this plan shown bounded thus: ———
 Other walls shown thus: - - - - -
 Traverse lines shown thus: ———

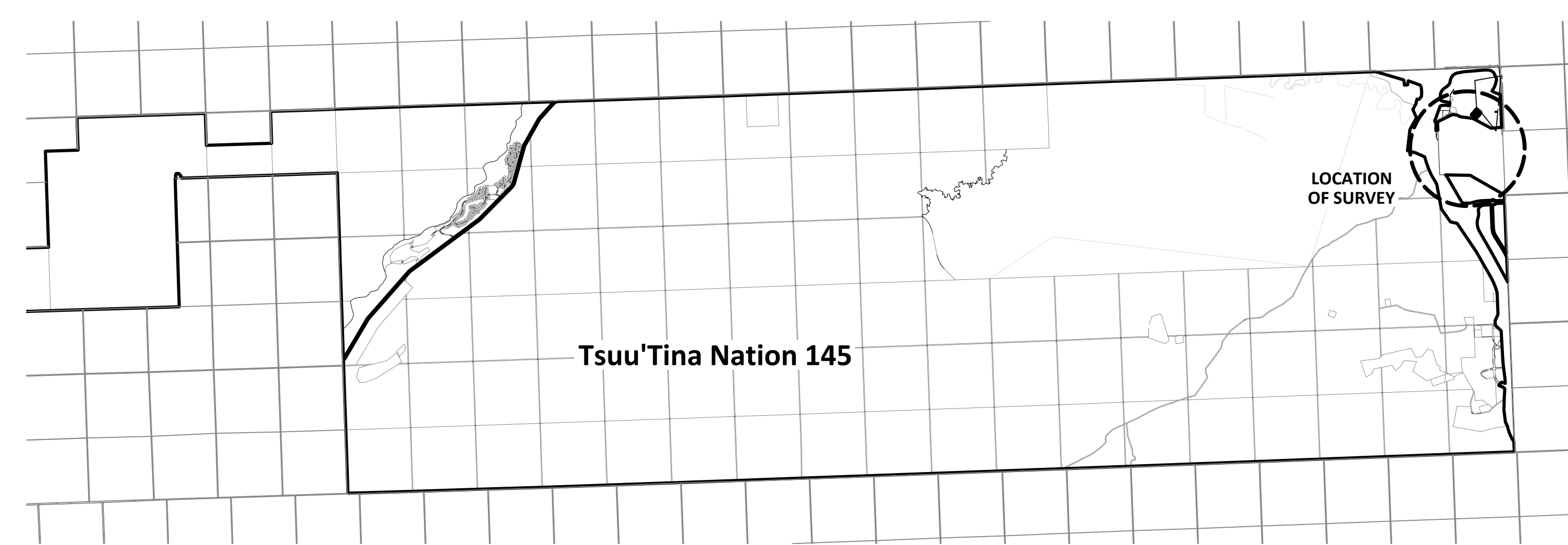
NOTES:
 Bearings are grid derived from GNSS observations and are referred to the central meridian of UTM Zone 11 (117° NAD83 (CSRS)) datum.
 All distances shown on this plan were derived from GNSS observations.
 To compute grid distances, multiply ground level distances by the average combined scale factor of 0.999917.
 The boundary of any unit is defined by the interior undecorated surface of drywall of exterior walls and ceiling and the undecorated surface of the floor of the unit as the case may be.
 Unit dimensions and unit areas are measured at floor level.
 Unit areas are computed from the dimensions shown on this plan.
 Ties to the buildings from property lines are measured perpendicular from the property lines to the exterior of the building foundation unless shown otherwise.
 Building dimensions shown on this plan are measured to the exterior wall and centreline of demising walls.
 All doors and windows of a unit that are located on the exterior walls of the unit are part of the unit.
 Where exclusive use areas consist of a balcony the exclusive use area includes land beneath the balcony.
 This plan is not intended to be a plan under the Alberta Condominium Property Act, but a plan to define lease areas.

GCP CONTROL STATIONS - UTM COORDINATES - NAD83 (CSRS - 2002.0 EPOCH) - Zone 11								
Station	Northing	Eastng	Latitude	Longitude	Combined Scale Factor	Orthometric Height	Ellipsoid Height	Estimated Horizontal Absolute Accuracy
GCP1	5654334.631	699925.544	51°00'20.85037"	-114°09'00.81137"	0.999917	1128.630	1112.580	0.04
GCP2	5654451.425	700582.034	51°00'23.80407"	-114°08'26.93598"	0.999917	1127.243	1111.193	0.04
GCP3	5653863.844	700448.163	50°59'29.05527"	-114°08'36.04171"	0.999917	1103.346	1087.296	0.04

Coordinates were derived from GNSS observations and are referred to NAD83 (CSRS) EPOCH 2002.0, using the Precise Point Positioning Service.
 Orthometric heights are derived from GNSS using the PFP Service and the ITRF2000 model.



Note: Elevations shown for illustrative purposes only.



RE: Section 36, Canada Lands Surveyors Regulations
 CERTIFIED CORRECT
 On the ___th day of ____, 2025

Michael A. Thompson
 Comm. No. 1845

Michael A. Thompson C.L.S.

PRELIMINARY PLAN
 SUBJECT TO REVISION

ACLS Checklist No.:
 SGB Project No.:

GeoVerra (AB) Limited Partnership
 Toll Free: 1-800-465-6233
 www.geoverra.com

Plan Date: May 5, 2025 Initials: AP-MT
 Project No.: 25-01213-001
 File: 25-01213-001-CLS-80D

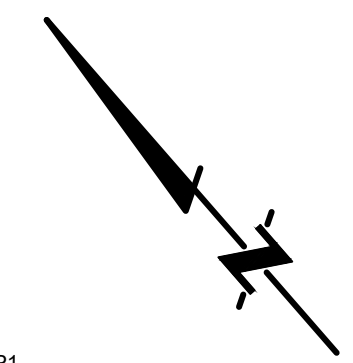
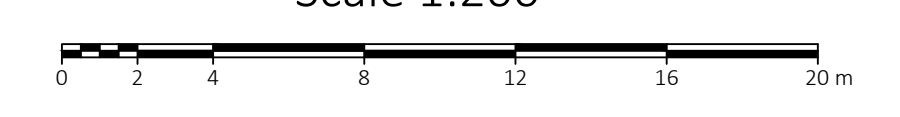


TABLE OF UNIT AREAS AND FACTORS		
UNIT No.	AREA (m ²)	UNIT FACTOR
1	TBD	108
2	TBD	109
3	TBD	108
4	TBD	109
5	TBD	108
6	TBD	109
7	TBD	108
8	TBD	109
9	TBD	108
10	TBD	109
11	TBD	108
12	TBD	109
13	TBD	109
14	TBD	108
15	TBD	109
16	TBD	108
17	TBD	101
18	TBD	100
19	TBD	109
20	TBD	108
21	TBD	109
22	TBD	108
23	TBD	101
24	TBD	109
25	TBD	109
26	TBD	108
27	TBD	109
28	TBD	108
29	TBD	100
30	TBD	101
31	TBD	100
32	TBD	101
33	TBD	109
34	TBD	108
35	TBD	101
36	TBD	100
37	TBD	108
38	TBD	109
39	TBD	100
40	TBD	101
41	TBD	109
42	TBD	108
43	TBD	100
44	TBD	101
45	TBD	108
46	TBD	109
47	TBD	100
48	TBD	101
49	TBD	100
50	TBD	101
51	TBD	100
52	TBD	101
53	TBD	100
54	TBD	109
55	TBD	100
56	TBD	101
57	TBD	108
58	TBD	109
59	TBD	108
60	TBD	109
61	TBD	108
62	TBD	109
63	TBD	108
64	TBD	109
65	TBD	108
66	TBD	109
67	TBD	108
68	TBD	109
69	TBD	109
70	TBD	108
71	TBD	109
72	TBD	108
73	TBD	109
74	TBD	108
75	TBD	101
76	TBD	100
77	TBD	109
78	TBD	109
79	TBD	109
80	TBD	109
81	TBD	109
82	TBD	109
83	TBD	109
84	TBD	109
85	TBD	109
86	TBD	109
87	TBD	109
88	TBD	109
89	TBD	109
90	TBD	109
91	TBD	109
92	TBD	109
93	TBD	109
94	TBD	109
Total	TBD	10000

Units 1 - 48 Plan
Scale 1:200



RE: Section 38, Canada Lands Surveyors Regulations
CERTIFIED CORRECT
On the ___th day of ___, 2025

Michael A. Thompson C.L.S.

PRELIMINARY PLAN
SUBJECT TO REVISION

ACLS Checklist No.:
SGB Project No.:

GeoVerra
GeoVerra (AB) Limited Partnership
Toll free: 1-800-465-6213
www.geoverra.com

Plan Date: May 5, 2025
Project No.: 25-01213-001
File: 25-01213-001-CLS-R0D

Initials: AP-MT





TABLE OF ATTACHED GARAGE AREAS		TABLE OF EXCLUSIVE USE BALCONY AREAS	
UNIT No.	AREA (m ²)	BALCONY No.	AREA (m ²)
1	42	1	15
2	44	2	15
3	42	3	15
4	44	4	15
5	42	5	15
6	44	6	15
7	42	7	15
8	44	8	15
9	42	9	15
10	44	10	15
11	42	11	15
12	44	12	15
13	44	13	15
14	42	14	15
15	44	15	15
16	42	16	15
17	40	17	13
18	38	18	13
19	44	19	15
20	42	20	15
21	44	21	15
22	42	22	15
23	40	23	13
24	38	24	13
25	44	25	15
26	42	26	15
27	44	27	15
28	42	28	15
29	38	29	13
30	40	30	13
31	38	31	13
32	40	32	13
33	44	33	15
34	42	34	15
35	40	35	13
36	38	36	13
37	42	37	15
38	44	38	15
39	38	39	13
40	40	40	13
41	44	41	15
42	42	42	15
43	38	43	13
44	40	44	13
45	42	45	15
46	44	46	15
47	38	47	13
48	40	48	13
49	38	49	13
50	40	50	13
51	38	51	13
52	40	52	13
53	38	53	13
54	40	54	13
55	38	55	13
56	40	56	13
57	42	57	15
58	44	58	15
59	42	59	15
60	44	60	15
61	42	61	15
62	44	62	15
63	42	63	15
64	44	64	15
65	42	65	15
66	44	66	15
67	42	67	15
68	44	68	15
69	44	69	15
70	42	70	15
71	44	71	15
72	42	72	15
73	44	73	15
74	42	74	15
75	40	75	13
76	38	76	13
77	44	77	15
78	42	78	15
79	44	79	15
80	42	80	15
81	44	81	15
82	42	82	15
83	42	83	15
84	44	84	15
85	42	85	15
86	44	86	15
87	42	87	15
88	44	88	15
89	42	89	15
90	44	90	15
91	42	91	15
92	44	92	15
93	42	93	15
94	44	94	14

Units 49 - 94 Plan
Scale 1:200

RE: Section 38, Canada Lands Surveyors Regulations
CERTIFIED CORRECT
On the ___th day of ____, 2025

Michael A. Thompson C.L.S.

PRELIMINARY PLAN
SUBJECT TO REVISION

ACLS Checklist No.:
SGB Project No.:

GeoVerra
GeoVerra (AB) Limited Partnership
Toll free: 1-800-465-6213
www.geoverra.com

Plan Date: May 5, 2025
Project No.: 25-01213-001
File: 25-01213-001-CLS-R0D

Initials: AP-MT