

Tentative Plan of
Building Condominium Units
 within Lot 153, Plan 113913 CLSR
 E.1/2 Sec.36, Tp.23, R.2, W.5.M.
 Tsuu T'ina Nation 145
 Province of Alberta
 Scale 1:500



The plot size that will provide true scale and optimum readability for this plan is 914 mm by 610 mm.

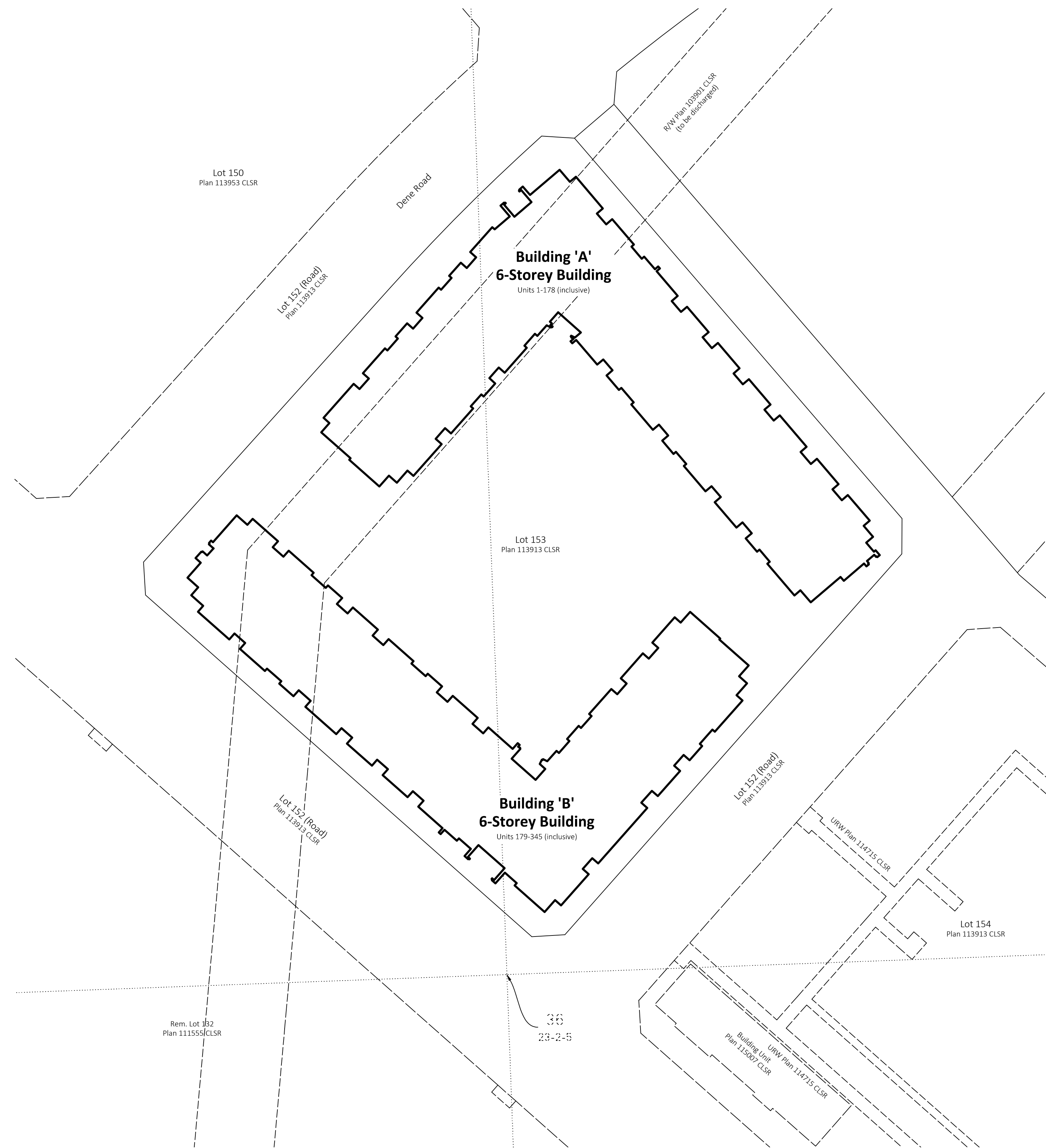
This survey was executed during the period of _____ to _____ by Colin D. Keir

LEGEND:

Buildings dealt with by this plan bounded thus: _____

NOTES:

All distances are horizontal at general ground level and are shown in metres and decimals thereof.
 To compute grid distances, multiply ground level distances by the average combined scale factor of 0.99991652.



PRELIMINARY PLAN
 SUBJECT TO REVISION

ACLS Checklist No.:
 SGB Project No.:



Plan Date: April 13, 2026 Initials: AKM - CDK
 Project No.: 26-00098
 File: 26-00098-001-CONDO-PRELIM

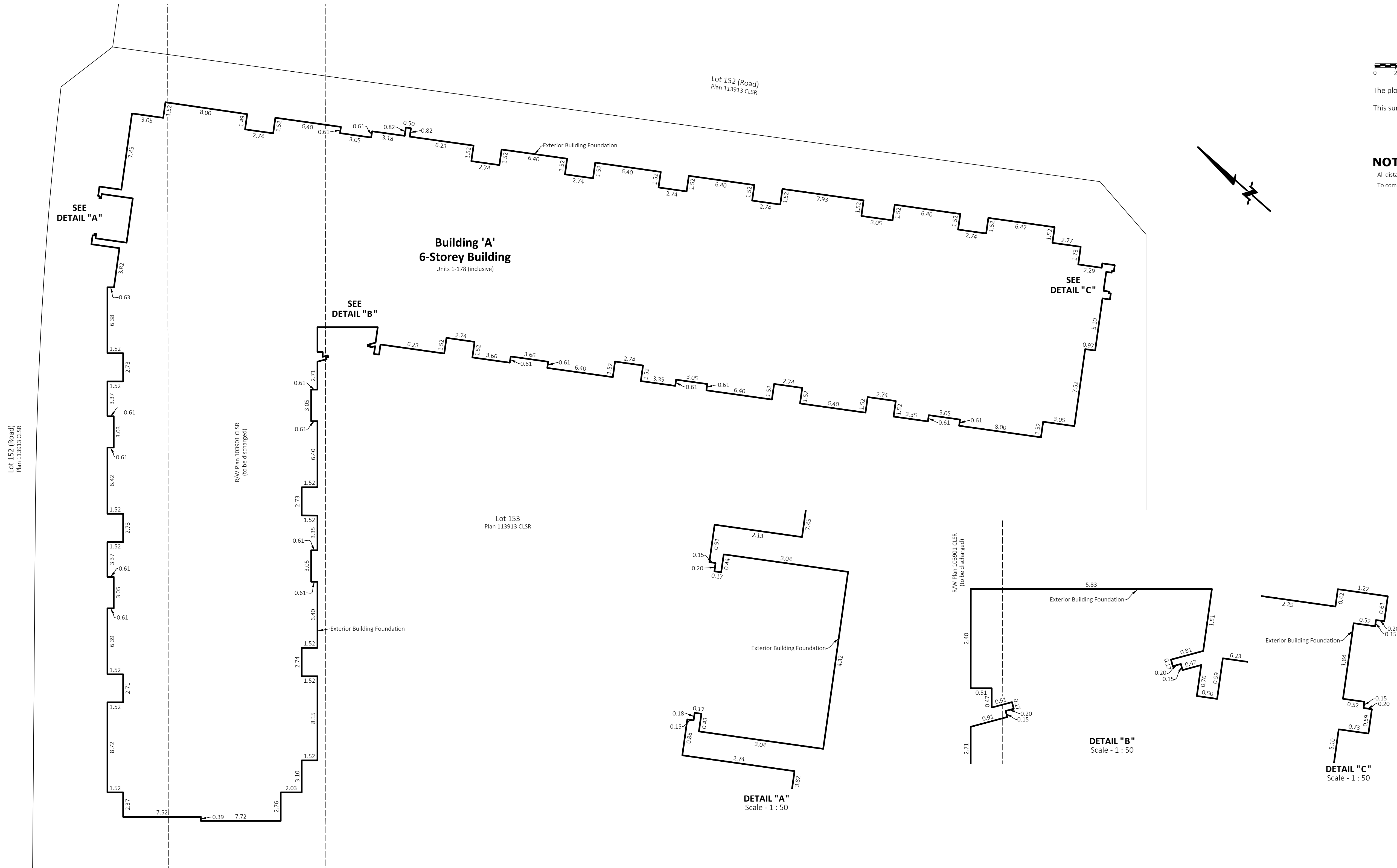
Unit Areas

Residential Unit Area Table	Residential Unit Area Table	Residential Unit Area Table	
Unit No.	Approx. Area (m ²)	Unit No.	Approx. Area (m ²)
1	51.8	116	76.6
2	73.6	117	59.8
3	51.6	118	72.8
4	73.6	119	551.8
5	76.8	120	73.6
6	73.6	121	51.6
7	50.4	122	73.6
8	71.4	123	95.3
9	51.6	124	93.9
10	73.7	125	76.6
11	89.8	126	50.4
12	73.6	127	71.4
13	51.6	128	51.6
14	73.6	129	76.6
15	73.6	130	71.5
16	73.6	131	93.4
17	73.6	132	73.6
18	89.8	133	51.6
19	73.6	134	73.6
20	73.7	135	73.6
21	90.0	136	73.6
22	50.4	137	76.1
23	71.4	138	89.8
24	73.6	139	73.6
25	51.6	140	79.3
26	73.6	141	93.9
27	59.8	142	50.4
28	72.8	143	76.9
29	51.8	144	73.6
30	73.6	145	51.6
31	51.6	146	76.6
32	73.6	147	59.8
33	95.2	148	72.8
34	93.8	149	51.8
35	76.6	150	73.6
36	50.4	151	51.6
37	71.4	152	73.6
38	51.6	153	91.4
39	76.6	154	90
40	66.8	155	73.6
41	93.4	156	50.4
42	73.6	157	71.4
43	51.6	158	51.6
44	73.6	159	73.6
45	73.6	160	66.8
46	73.6	161	89.5
47	76.2	162	73.6
48	89.8	163	51.6
49	73.6	164	73.6
50	79.4	165	73.6
51	93.8	166	73.6
52	51.5	167	73.6
53	76.9	168	89.8
54	73.6	169	73.6
55	51.6	170	73.7
56	76.6	171	90
57	59.8	172	50.4
58	72.8	173	71.4
59	51.8	174	73.6
60	73.7	175	51.6
61	51.6	176	73.6
62	73.6	177	59.8
63	94.4	178	72.8
64	93.9	179	51.6
65	76.6	180	51.6
66	50.4	181	73.6
67	71.4	182	73.6
68	51.6	183	73.7
69	76.6	184	89
70	71.5	185	59.8
71	93.4	186	73.8
72	73.6	187	89.8
73	51.6	188	73.5
74	73.6	189	89.4
75	73.6	190	51.2
76	73.6	191	72.8
77	76.2	192	73.6
78	89.8	193	73.6
79	73.6	194	89.8
80	79.3	195	59.8
81	93.8	196	73.5
82	50.4	197	89.1
83	76.9	198	73.7
84	73.6	199	73.6
85	51.6	200	59.8
86	76.6	201	71.4
87	59.8	202	73.6
88	72.8	203	59.8
89	51.8	204	73.5
90	73.5	205	73.5
91	51.6	206	51.6
92	73.6	207	51.6
93	94.4	208	79.1
94	93.9	209	73.6
95	76.6	210	79.3
96	50.4	211	92.8
97	71.4	212	59.8
98	51.6	213	73.9
99	76.6	214	96.7
100	71.5	215	73.5
101	93.4	216	95.5
102	73.6	217	89.8
103	51.6	218	54
104	73.5	219	72.8
105	73.5	220	73.5
106	73.5	221	76.2
107	76.1	222	89.8
108	89.8	223	59.8
109	73.5	224	76.6
110	79.4	225	93
111	93.9	226	79.4
112	50.3	227	76.6
113	76.9	228	59.8
114	73.6	229	76.9
115	51.6	230	73.6

Parking Stall Area Table	Parking Stall Area Table	Parking Stall Area Table	
Unit No.	Approx. Area (m ²)	Unit No.	Approx. Area (m ²)
231	59.8	346	15.8
232	73.5	347	14.1
233	76.6	348	14.1
234	51.6	349	14.1
235	51.6	350	14.1
236	79.1	351	14.2
237	73.6	352	14.1
238	79.3	353	14.1
239	92.8	354	14.2
240	59.8	355	14.1
241	73.9	356	14.1
242	96.7	357	14.2
243	73.5	358	14.1
244	95.5	359	14.1
245	96.7	360	14.2
246	50	361	14.1
247	72.5	362	14.1
248	73.5	363	14.2
249	76.2	364	14.1
250	89.8	365	14.1
251	59.8	366	14.2
252	76.6	367	14.1
253	93	368	14.1
254	79.4	369	14.2
255	76.6	370	14.1
256	59.8	371	14.1
257	76.9	372	14.2
258	73.6	373	14.1
259	59.8	374	14.1
260	73.5	375	14.2
261	76.6	376	14.1
262	59.8	377	14.1
263	51.6	378	14.2
264	79.1	379	15.8
265	73.6	380	15.7
266	79.3	381	14.1
267	92.8	382	14.2
268	59.8	383	14.1
269	73.9	384	14.1
270	96.7	385	14.2
271	73.5	386	14.1
272	95.5	387	14.1
273	96.7	388	14.2
274	54	389	14.1
275	72.8	390	14.1
276	73.5	391	14.2
277	76.2	392	14.1
278	89.8	393	14.1
279	59.8	394	14.2
280	76.6	395	14.1
281	93	396	14.1
282	79.4	397	14.2
283	76.6	398	14.1
284	59.8	399	14.1
285	76.9	400	14.2
286	73.6	401	14.1
287	59.8	402	14.1
288	73.5	403	14.2
289	76.6	404	14.1
290	51.6	405	14.1
291	51.6	406	14.2
292	79.1	407	14.1
293	73.6	408	14.1
294	79.3	409	14.2
295	92.8	410	14.1
296	59.8	411	14.1
297	73.9	412	14.2
298	96.7	413	14.1
299	73.5	414	14.1
300	95.5	415	14.2
301	96.7	416	14.1
302	54	417	14.1
303	72.8	418	14.2
304	73.5	419	14.1
305	76.2	420	14.1
306	89.8	421	14.2
307	59.8	422	14.1
308	76.6	423	14.1
309	93	424	14.2
310	79.4	425	15.8
311	76.6	426	15.7
312	59.8	427	14.1
313	76.9	428	14.2
314	73.6	429	14.1
315	59.8	430	14.1
316	73.5	431	14.2
317	76.6	432	14.1
318	51.6	433	14.2
319	51.6	434	14.1
320	73.6	435	14.1
321	73.6	436	14.2
322	73.7	437	14.1
323	89	438	14.1
324	59.8	439	14.2
325	73.9	440	14.1
326	89.8	441	14.1
327	73.5	442	14.2
328	89.3	443	16.6
329	89.8	444	15.8
330	50.9	445	14.1
331	72.8	446	14.1
332	73.6	447	14.2
333	73.6	448	14.1
334	89.8	449	13.5
335	59.8	450	13.6
336	73.6	451	13.5
337	89.1	452	13.5
338	73.8	453	13.6
339	73.6	454	13.5
340	59.8	455	14.1
341	71.4	456	14.2
342	73.6	457	14.1
343	59.8	458	14.1
344	73.5	459	15.8
345	73.5	460	14.1

Parking Stall Area Table	Parking Stall Area Table	Parking Stall Area Table	
Unit No.	Approx. Area (m ²)	Unit No.	Approx. Area (m ²)
461	14.2	576	14.2
462	14.1	577	14.1
463	14.1	578	14.1
464	14.2	579	14.2
465	14.1	580	14.1
466	14.1	581	13.5
467	14.1	582	13.5
468	14.1	583	13.5
469	14.2	584	13.5
470	14.1	585	13.5
471	14.1	586	15.8
472	14.2	587	14.1
473	14.1	588	14.2
474	14.1	589	14.1
475	14.2	590	14.1
476	14.1	591	14.1
477	14.1	592	14.1
478	14.2	593	14.2
479	14.1	594	14.1
480	14.1	595	14.1
481	14.2	596	14.2
482	14.1	597	14.1
483	14.1	598	14.1
484	14.2	599	14.1
485	14.1	600	14.2
486	14.1	601	14.1
487	14.2	602	14.1
488	14.1	603	14.1
489	14.1	604	14.2
490	14.1	605	14.2
491	14.1	606	14.1
492	14.1	607	14.1
493	14.1	608	14.2
494	14.2	609	14.1
495	14.1	610	14.1
496	14.1	611	14.2
497	14.2	612	14.1
498	14.2	613	14.1
499	14.2	614	14.2
500	14.1	615	14.1
501	15.8	616	14.1
502	14.2	617	14.2
503	14.1	618	14.1
504	15.7	619	14.1
505	15.8	620	14.2
506	15.8	621	14.1
507	14.2	622	14.1
508	14.1	623	14.2
509	14.1	624	14.1
510	14.2	625	14.1
511	14.1	626	14.2
512	14.1	627	14.1
513	14.2	628	15.8
514	14.1	629	13.6
515	14.1	630	13.5
516	14.2	631	13.1
517	14.1	632	14.1
518	14.1	633	14.2
519	14.2	634	14.1
520	14.1	635	14.1
521	14.1	636	14.2
522	14.2	637	14.1
523	14.1	638	14.1
524	14.1	639	14.2
525	14.2	640	14.1
526	15.8	641	15.8
527	15.8	642	14.2
528	14.1	643	14.1
529	14.1	644	14.1
530	14.2	645	14.2
531	14.1	646	14.1
532	14.1	647	14.1
533	14.2	648	14.2
534	14.1	649	14.1
535	14.1	650	15.7
536	14.2	651	14.1
537	14.1	652	14.2
538	14.1	653	14.1
539	14.2		

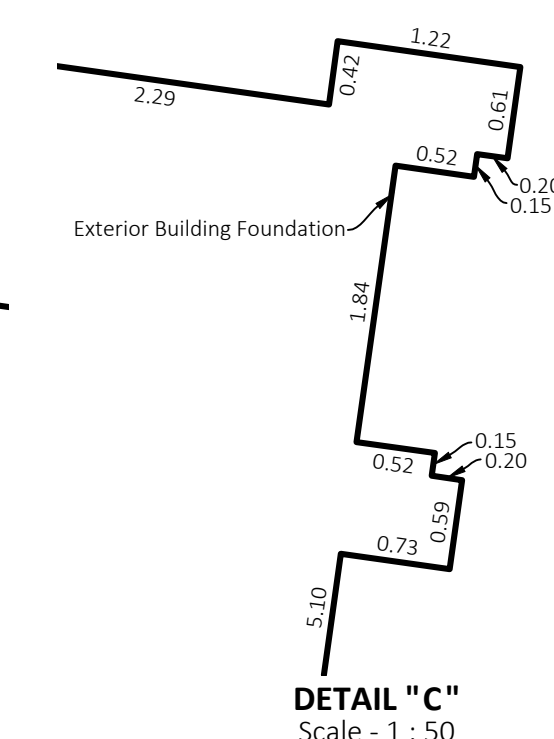
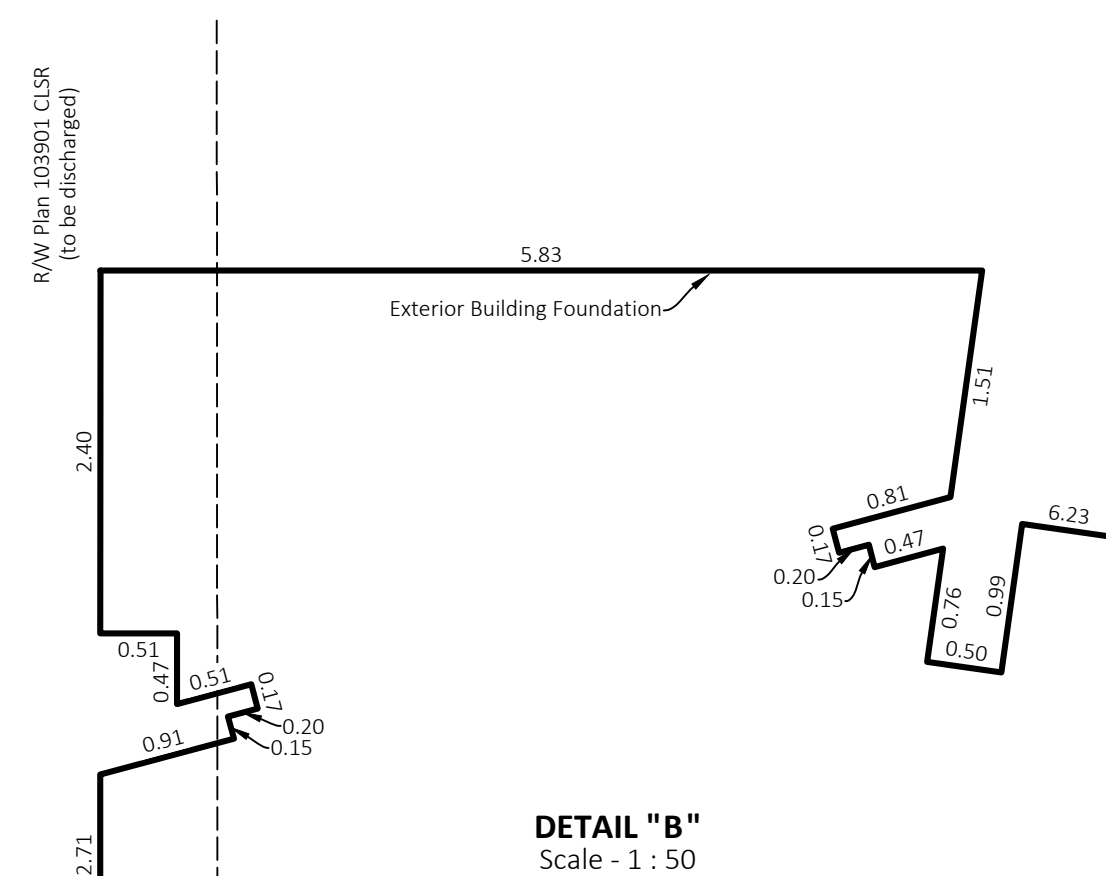
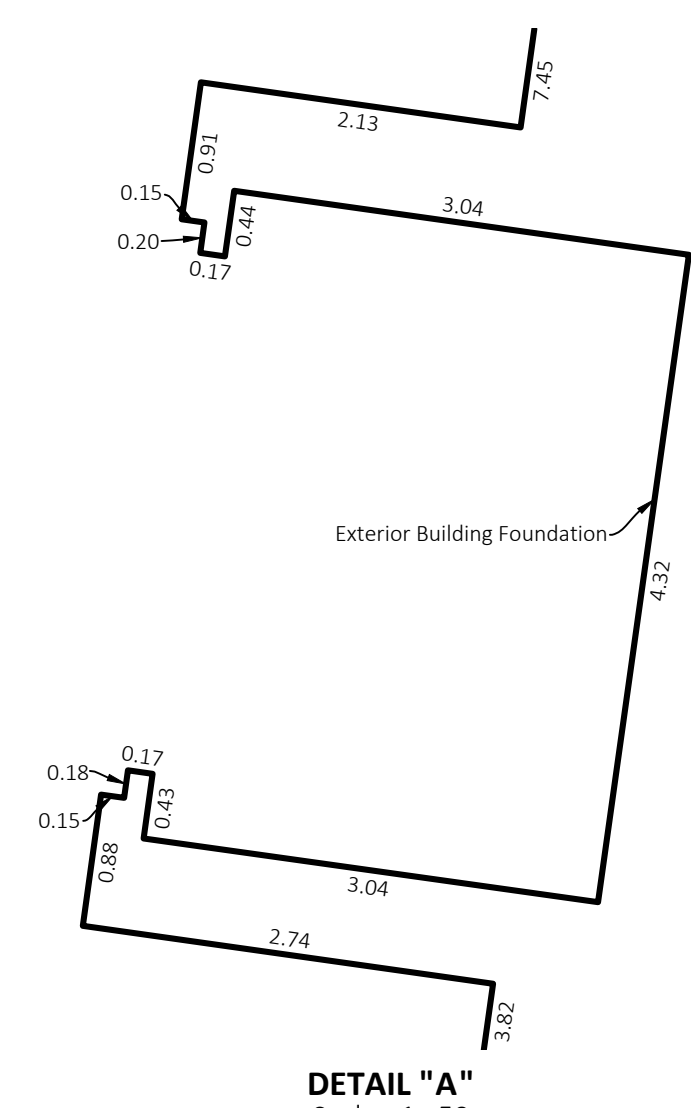
Building "A" Exterior



The plot size that will provide true scale and optimum readability for this plan is 914 mm by 610 mm.
This survey was executed during the period of _____ to _____ by Colin D. Keir

NOTES:

All distances are horizontal at general ground level and are shown in metres and decimals thereof.
To compute grid distances, multiply ground level distances by the average combined scale factor of 0.99991652.



PRELIMINARY PLAN
SUBJECT TO REVISION

ACLS Checklist No.:	
SGB Project No.:	
<small>GeoVerra (AB) Limited Partnership Toll Free: 1-800-465-6233 www.geoverra.com</small>	
Plan Date: April 13, 2026	Initials: AKM - CDK
Project No.: 26-00098	
File: 26-00098-001-CONDO-PRELIM	Sheet 3 of 20

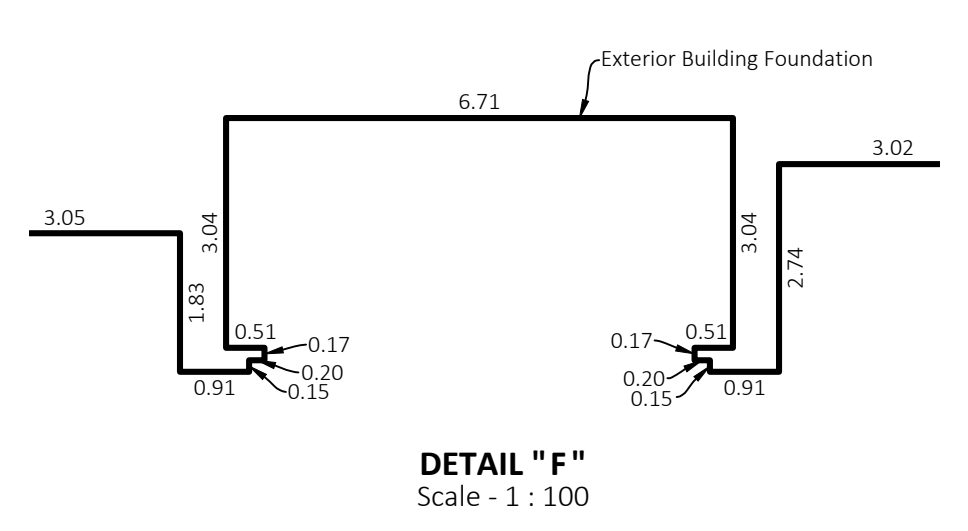
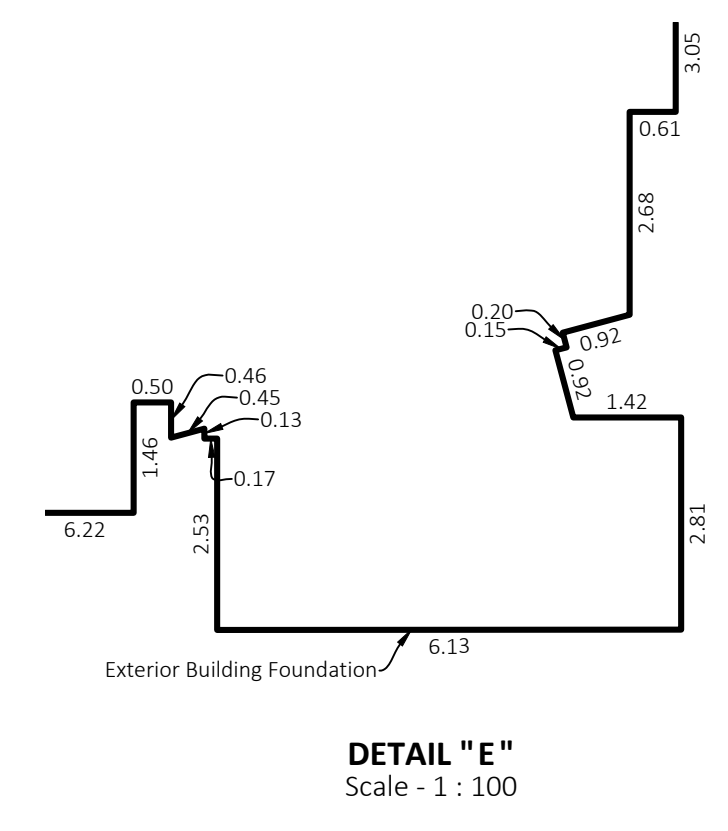
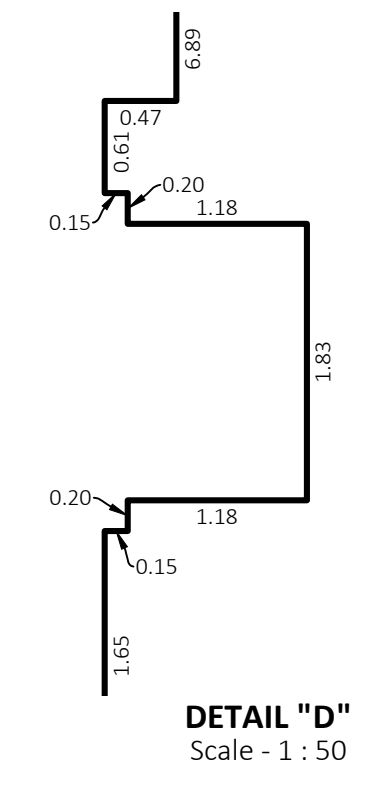
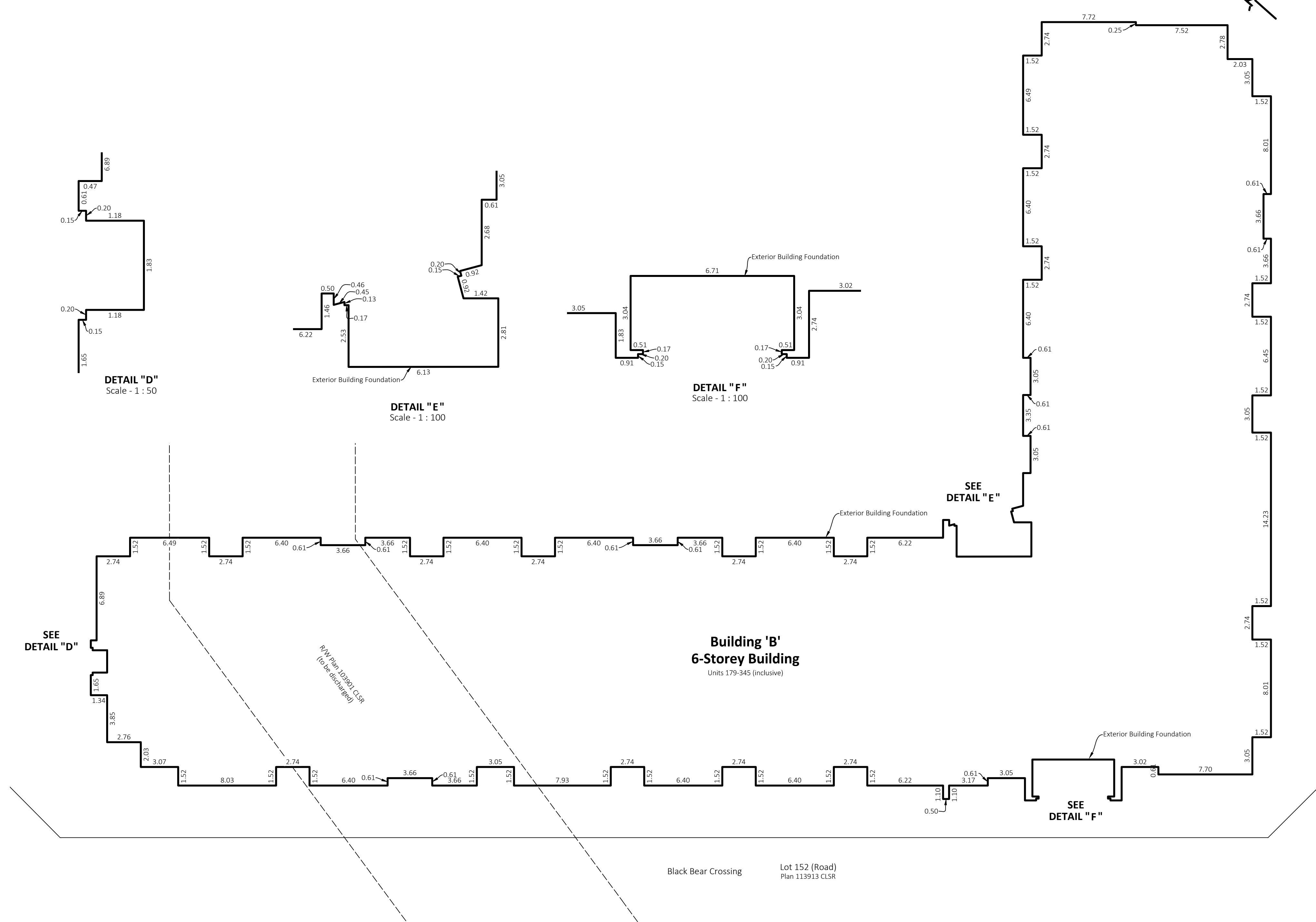
Building "B" Exterior



The plot size that will provide true scale and optimum readability for this plan is 914 mm by 610 mm.
 This survey was executed during the period of _____ to _____ by Colin D. Keir

NOTES:

All distances are horizontal at general ground level and are shown in metres and decimals thereof.
 To compute grid distances, multiply ground level distances by the average combined scale factor of 0.99991652.



PRELIMINARY PLAN
 SUBJECT TO REVISION

ACLS Checklist No.:	
SGB Project No.:	
GeoVerra (AB) Limited Partnership Toll Free: 1-800-465-6233 www.geoverra.com	
Plan Date: April 13, 2026	Initials: AKM - CDK
Project No.: 26-00098	
File: 26-00098-001-CONDO-PRELIM	Sheet 4 of 20

Parkade Level - North



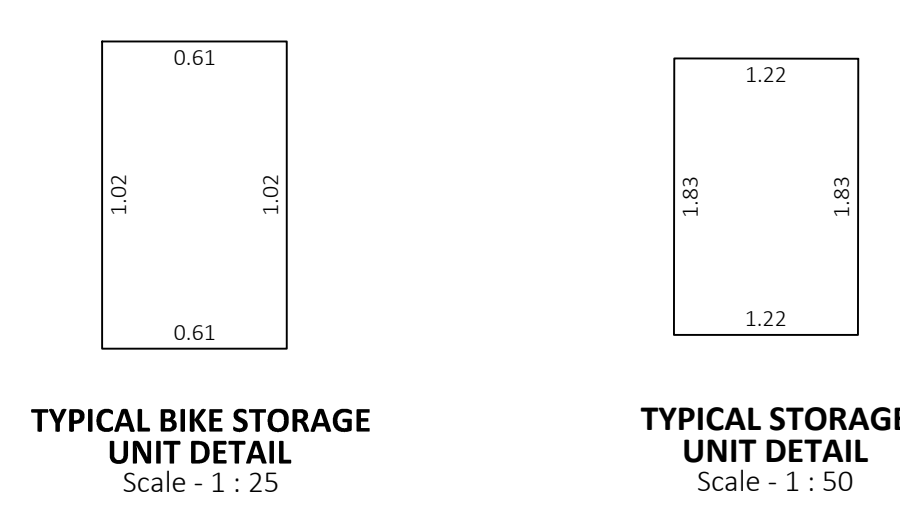
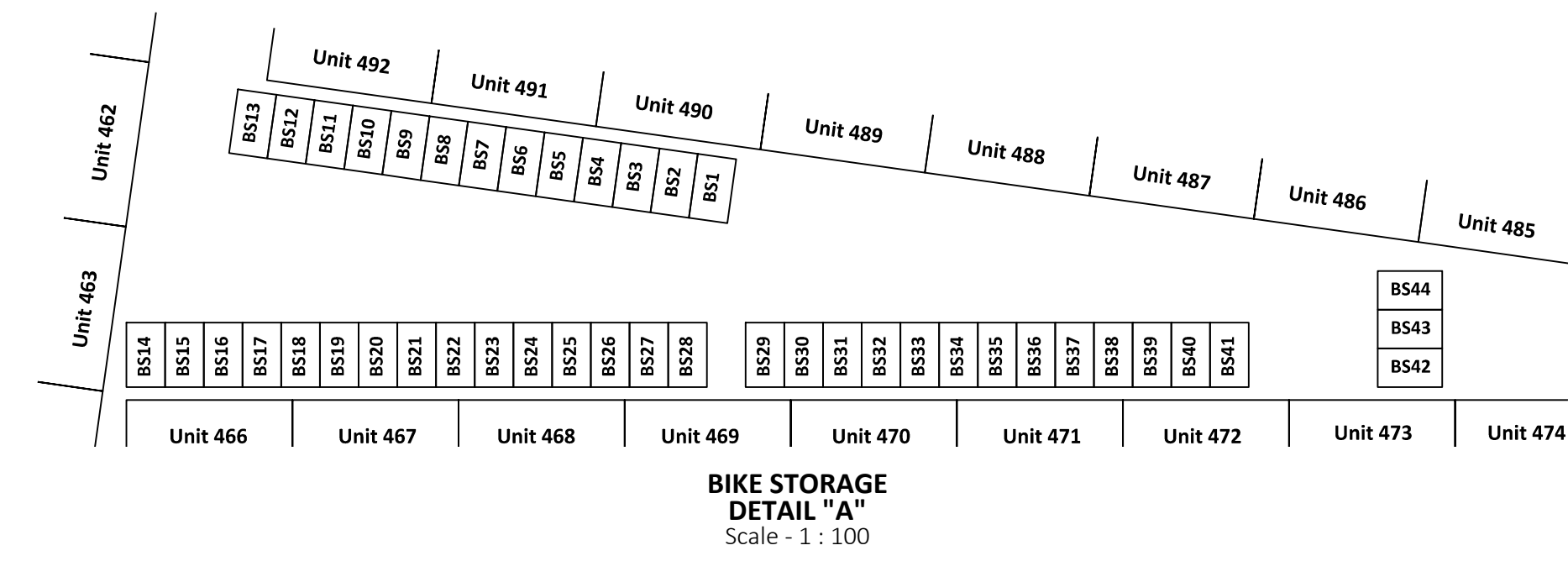
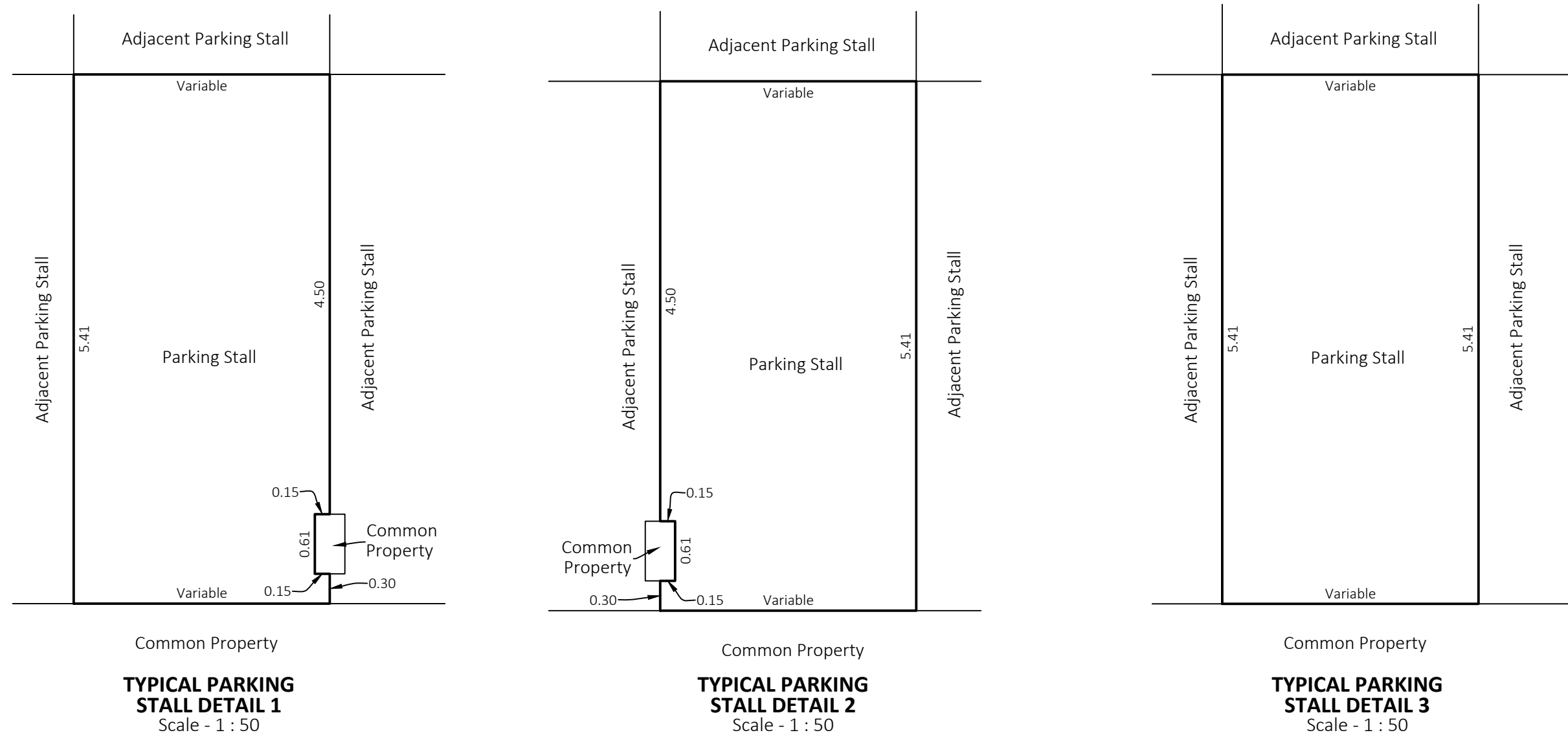
The plot size that will provide true scale and optimum readability for this plan is 914 mm by 610 mm.
This survey was executed during the period of _____ to _____ by Colin D. Keir

NOTES:

All distances are horizontal at general ground level and are shown in metres and decimals thereof.
Bicycle Storage Areas are exclusive use areas and denoted BS1, BS2, etc.

SEE BIKE STORAGE
DETAIL "A"

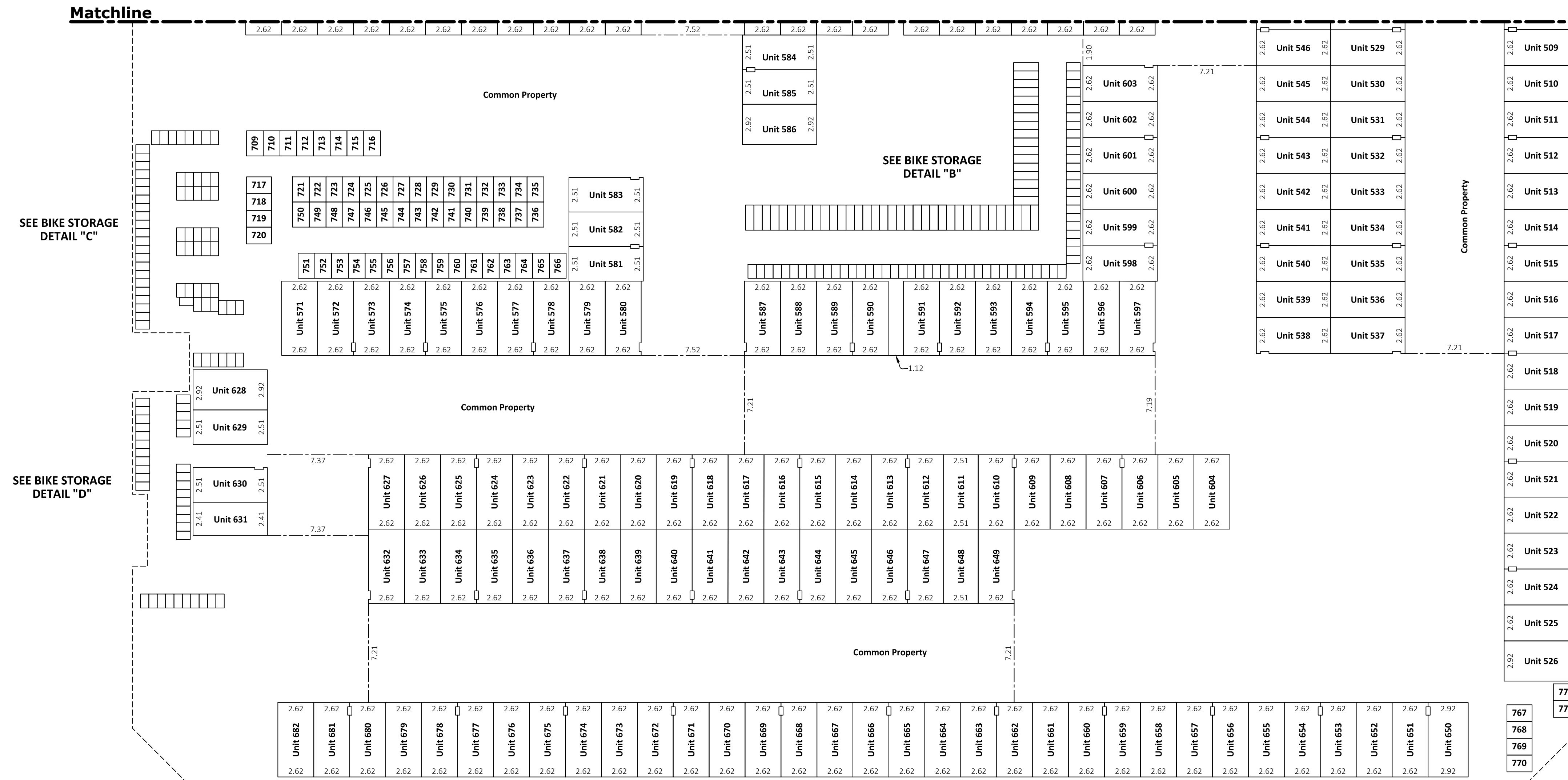
Matchline



PRELIMINARY PLAN
SUBJECT TO REVISION

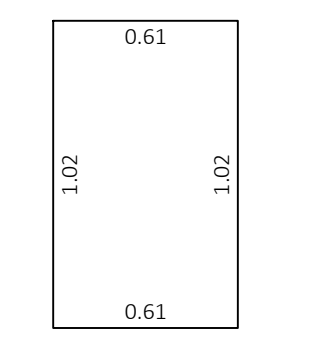
Parkade Level - North

Matchline

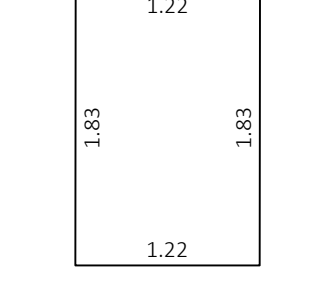
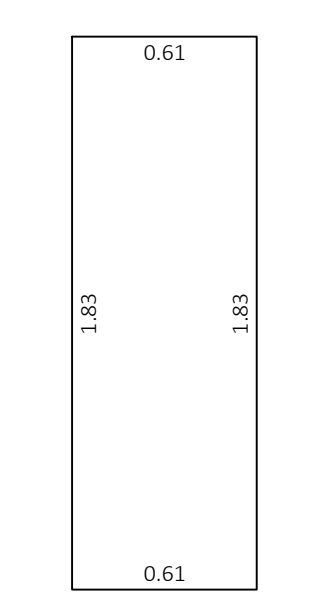


The plot size that will provide true scale and optimum readability for this plan is 914 mm by 610 mm.
This survey was executed during the period of _____ to _____ by Colin D. Keir

NOTES:
All distances are horizontal at general ground level and are shown in metres and decimals thereof.
Bicycle Storage Areas are exclusive use areas and denoted BS1, BS2, etc.

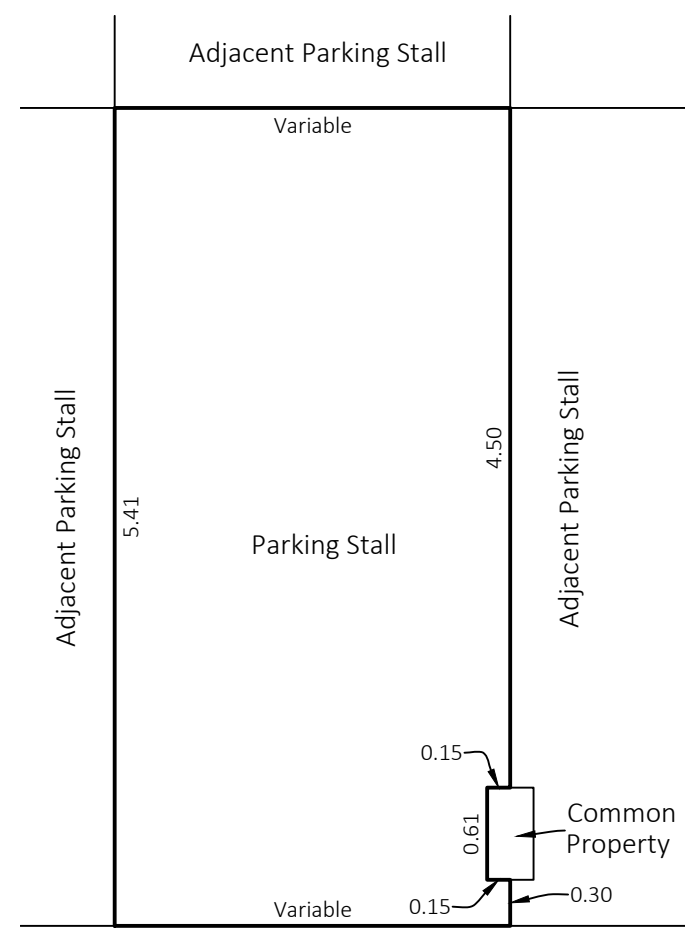


TYPICAL BIKE STORAGE UNIT DETAIL
Scale - 1 : 25

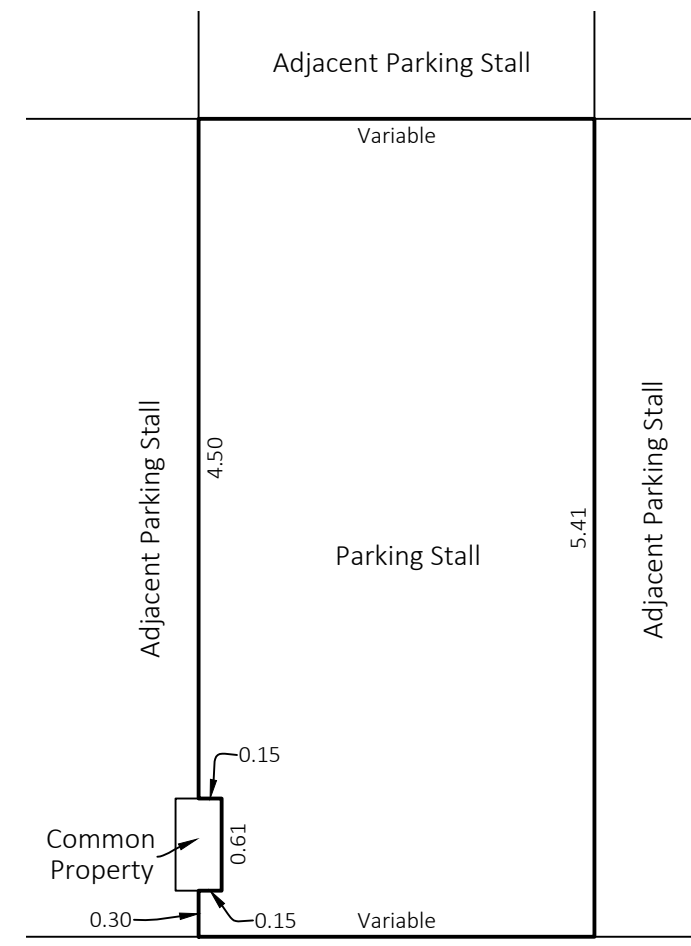


TYPICAL STORAGE UNIT DETAIL
Scale - 1 : 50

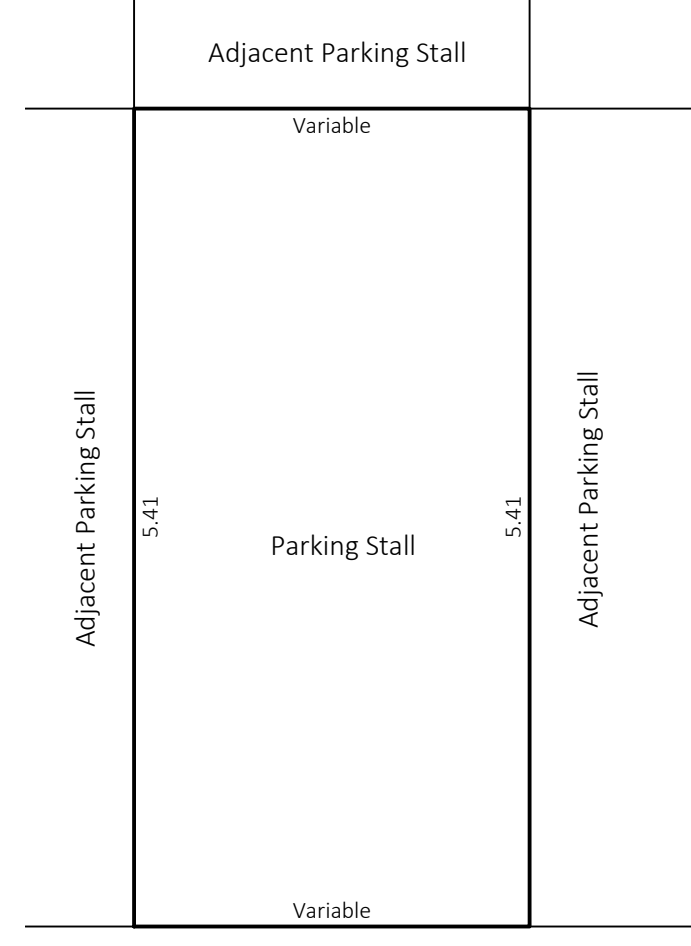
TYPICAL EXTENDED BIKE STORAGE UNIT DETAIL
Scale - 1 : 25



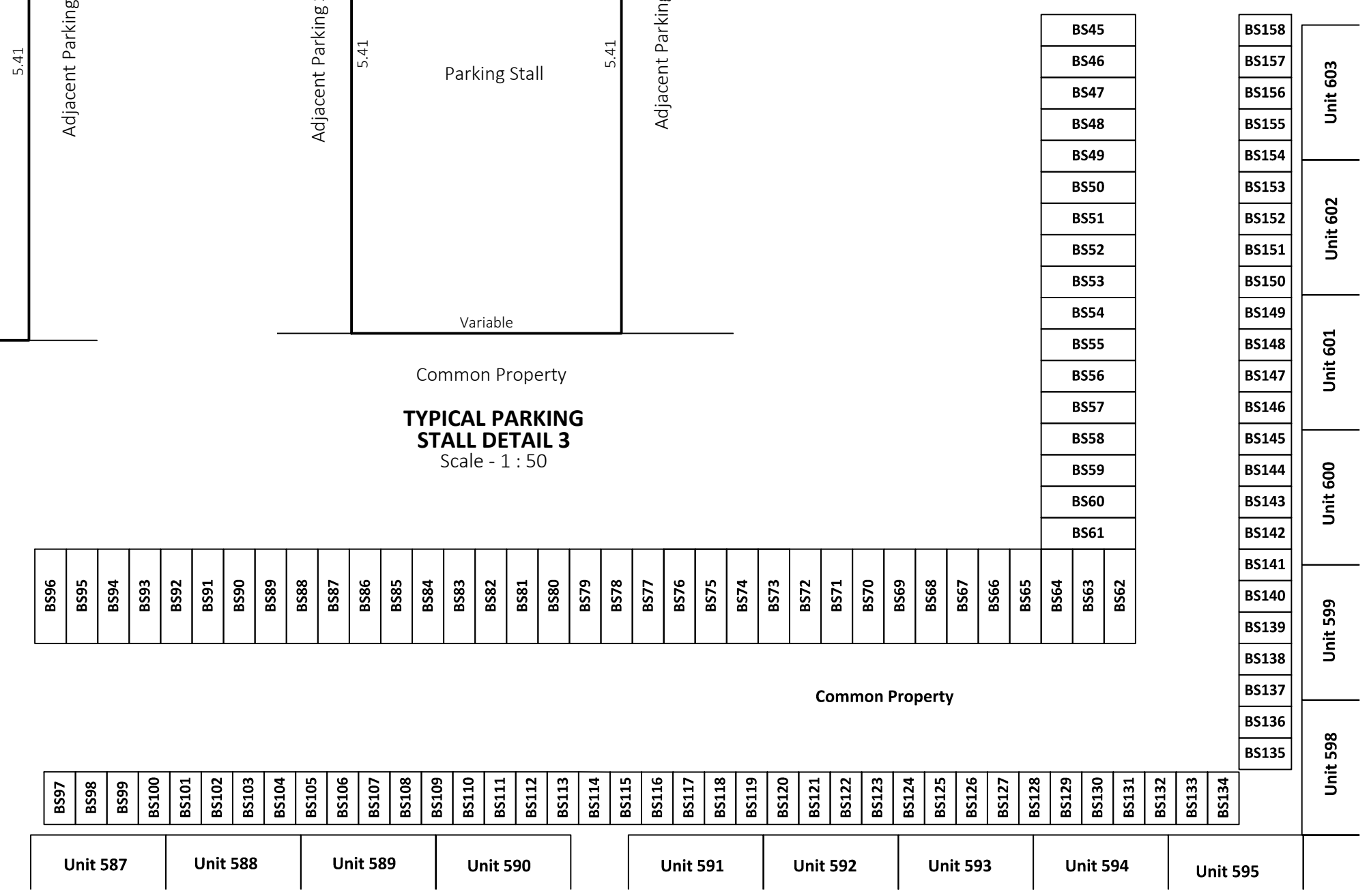
TYPICAL PARKING STALL DETAIL 1
Scale - 1 : 50



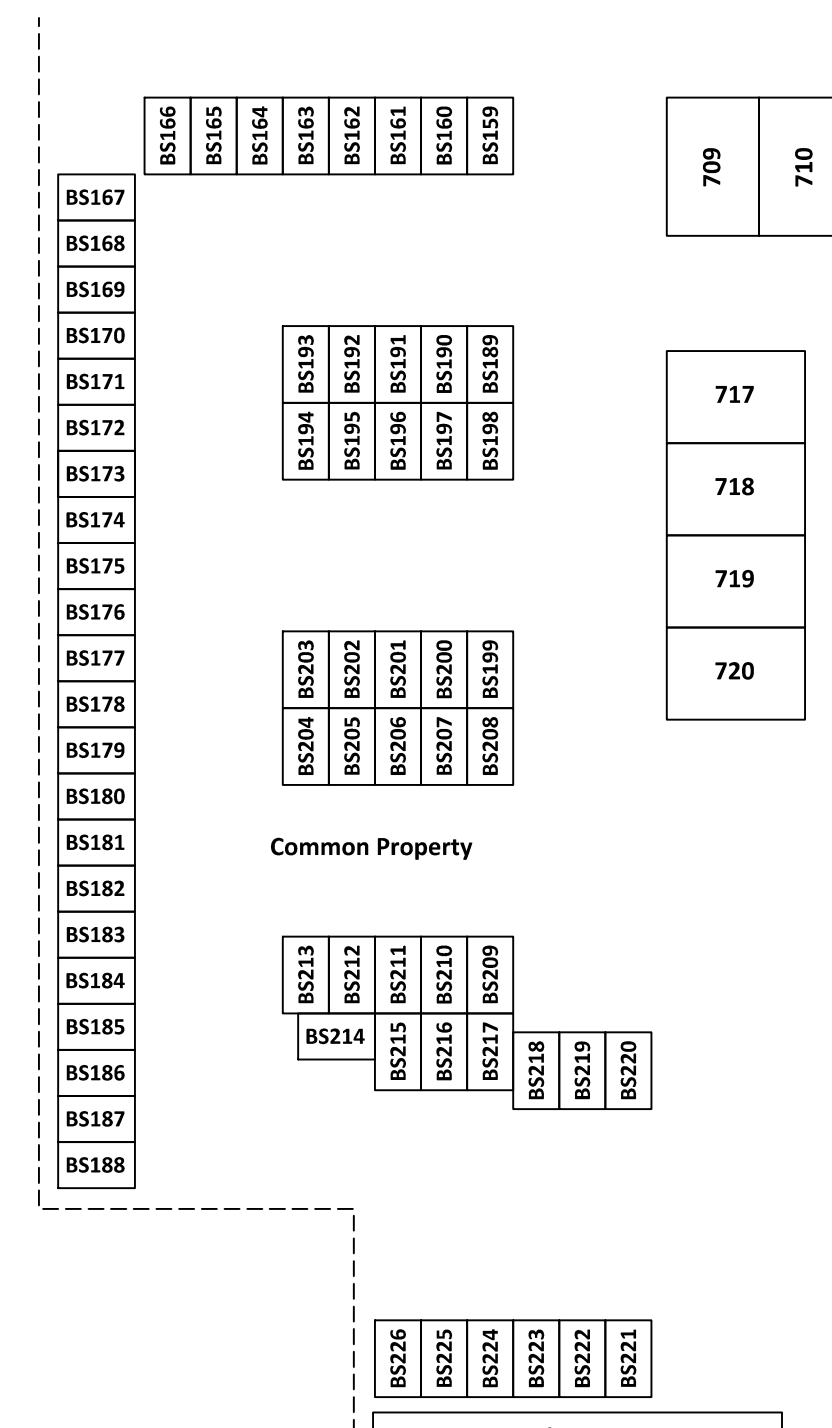
TYPICAL PARKING STALL DETAIL 2
Scale - 1 : 50



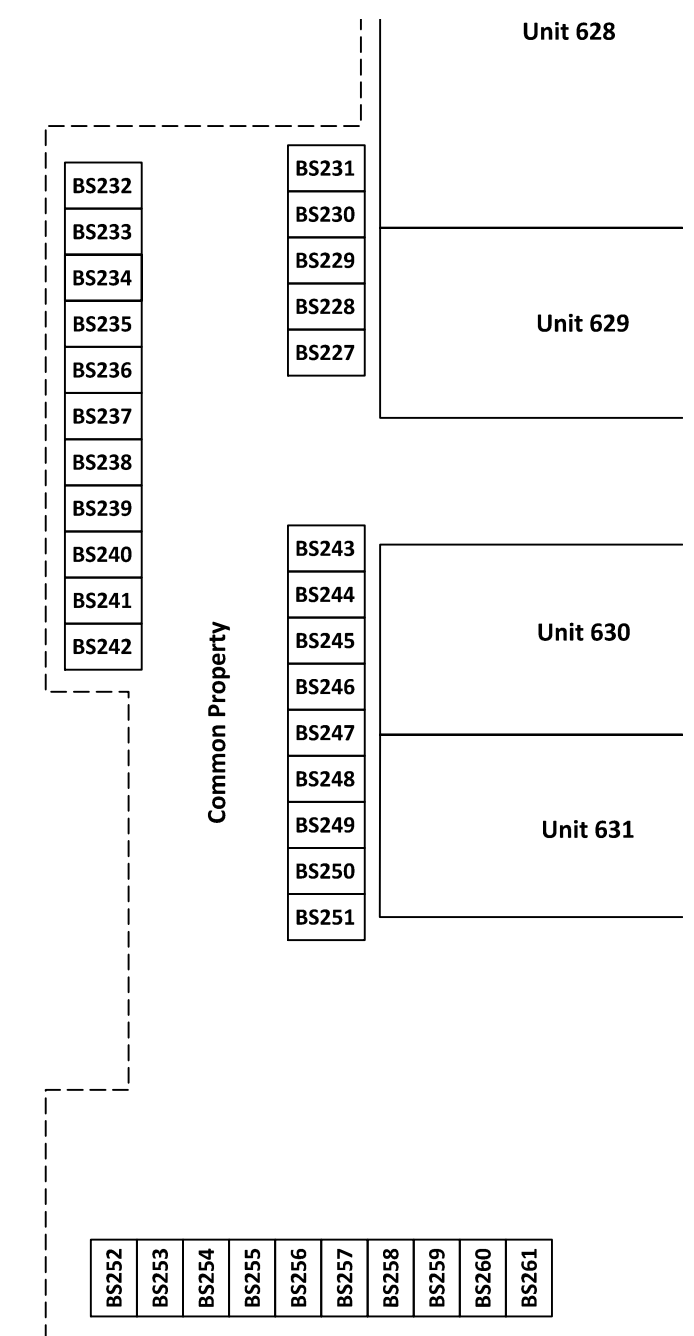
TYPICAL PARKING STALL DETAIL 3
Scale - 1 : 50



BIKE STORAGE DETAIL "B"
Scale - 1 : 100



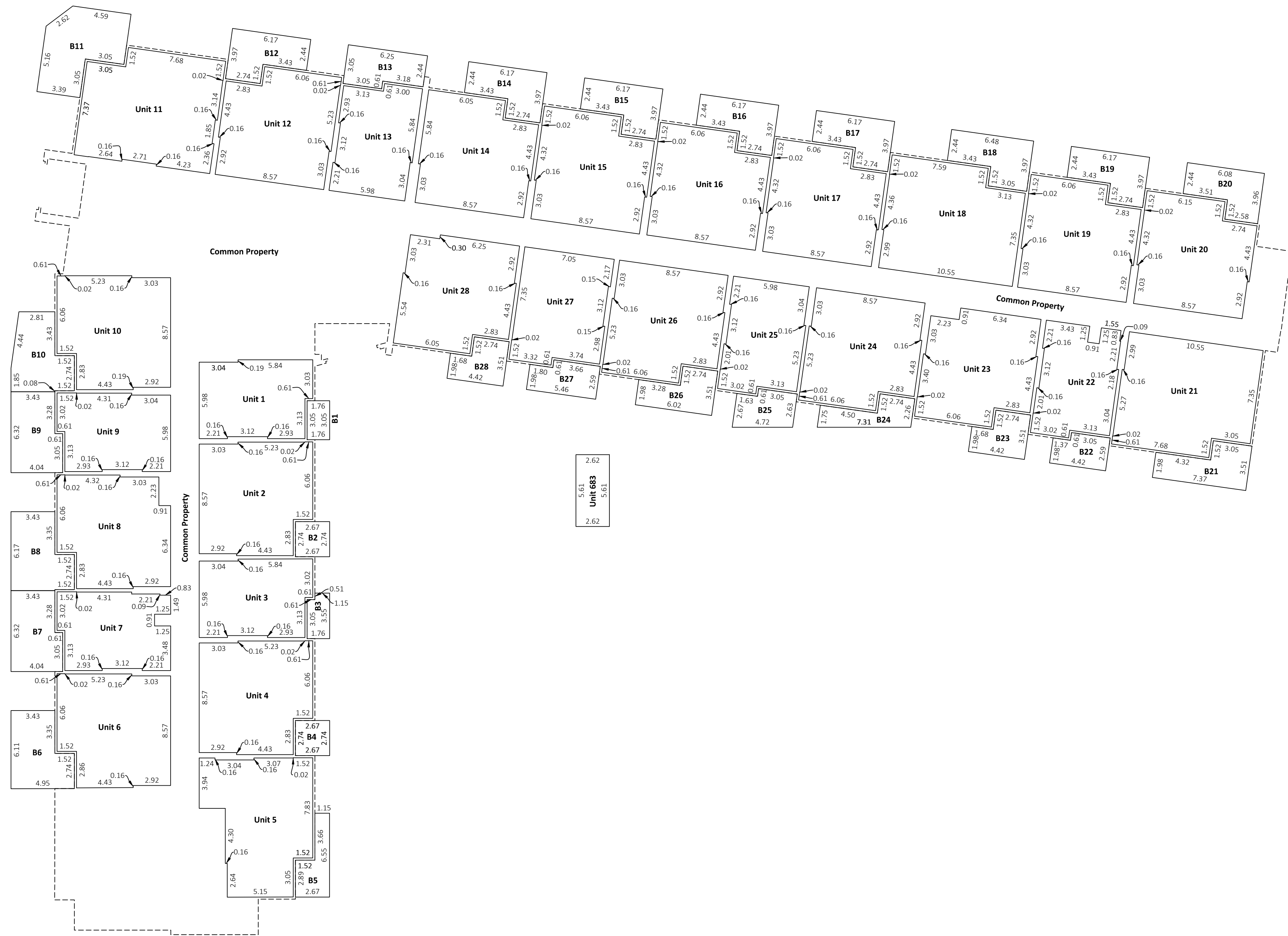
BIKE STORAGE DETAIL "C"
Scale - 1 : 100



BIKE STORAGE DETAIL "D"
Scale - 1 : 100

PRELIMINARY PLAN
SUBJECT TO REVISION

Building "A" - 1st Level



The plot size that will provide true scale and optimum readability for this plan is 914 mm by 610 mm.

This survey was executed during the period of _____ to _____ by Colin D. Keir

NOTES:

All distances are horizontal at general ground level and are shown in metres and decimals thereof.
Balconies/Patios are exclusive use areas and denoted B1, B2, etc.

PRELIMINARY PLAN
SUBJECT TO REVISION

ACLS Checklist No.:

SGB Project No.:



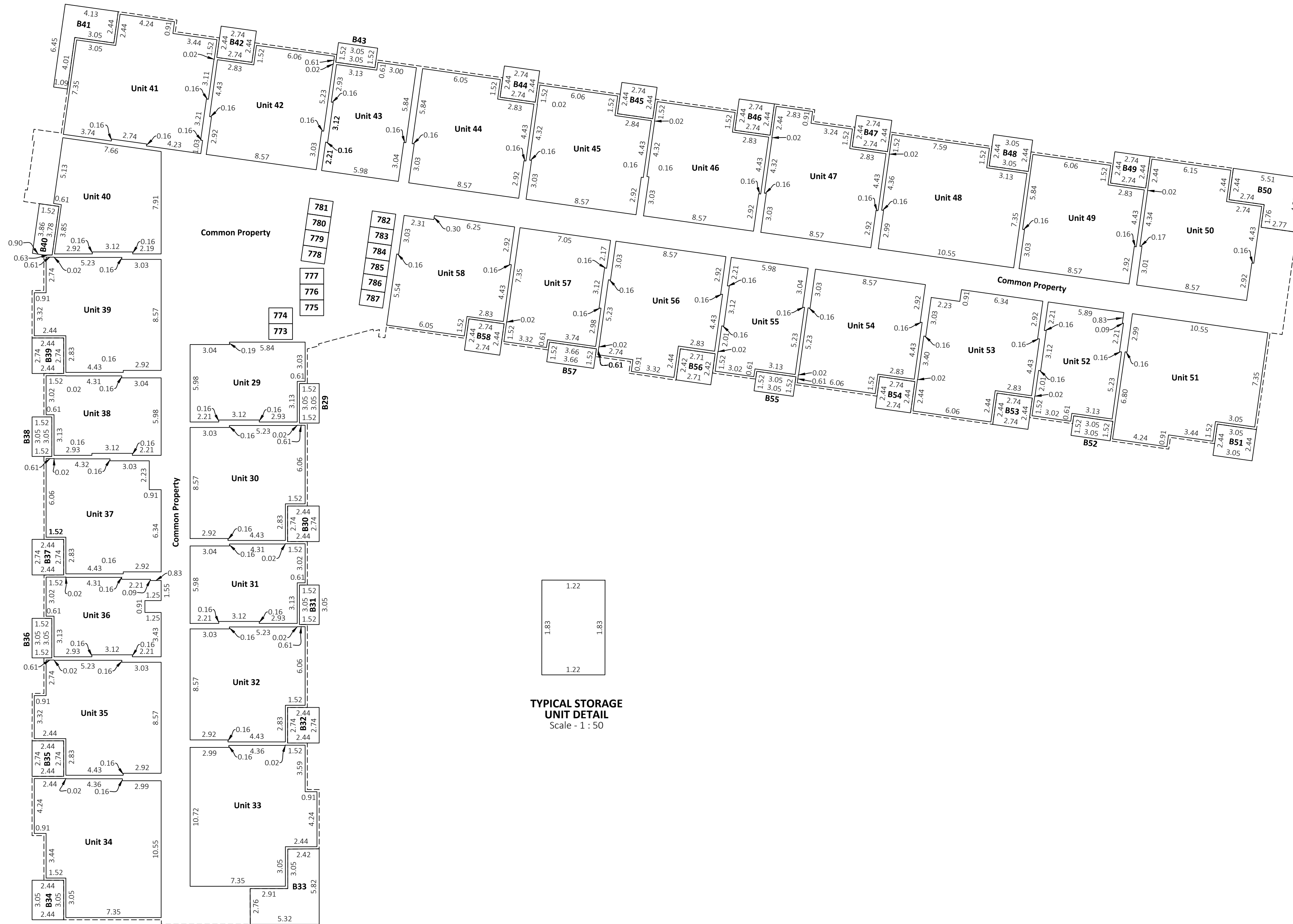
Plan Date: April 13, 2026

Initials: AKM - CDK

Project No.: 26-00098

File: 26-00098-001-CONDO-PRELIJ

Building "A" - 2nd Level



The plot size that will provide true scale and optimum readability for this plan is 914 mm by 610 mm.

This survey was executed during the period of _____ to _____ by Colin D. Keir

NOTES:

All distances are horizontal at general ground level and are shown in metres and decimals thereof.
Balconies/Patios are exclusive use areas and denoted B1, B2, etc.

PRELIMINARY PLAN
SUBJECT TO REVISION

ACLS Checklist No.:
SGB Project No.:



Plan Date: April 13, 2026 Initials: AKM - CDK
Project No.: 26-00098
File: 26-00098-001-CONDO-PRELIUM

Building "A" - 3rd Level

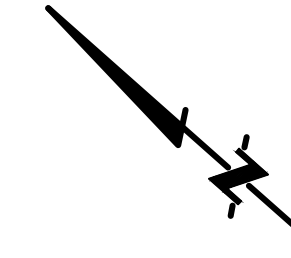


The plot size that will provide true scale and optimum readability for this plan is 914 mm by 610 mm.

This survey was executed during the period of _____ to _____ by Colin D. Keir

NOTES:

All distances are horizontal at general ground level and are shown in metres and decimals thereof.
Balconies/Patios are exclusive use areas and denoted B1, B2, etc.



PRELIMINARY PLAN
SUBJECT TO REVISION

ACLS Checklist No.:

SGB Project No.:

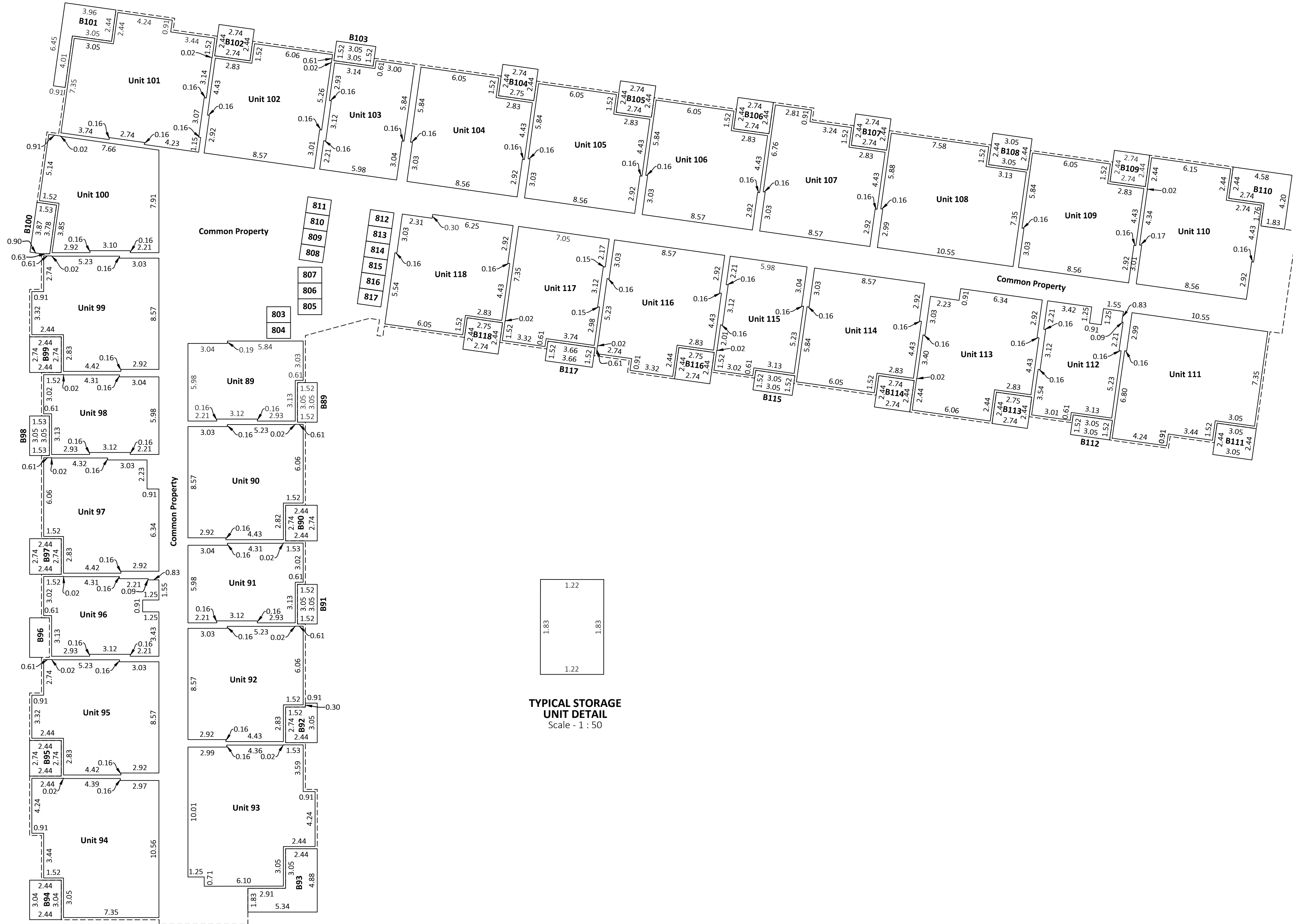


Plan Date: April 13, 2026 Initials: AKM - CDK

Project No.: 26-00098

File: 26-00098-001-CONDO-PRELIUM

Building "A" - 4th Level



The plot size that will provide true scale and optimum readability for this plan is 914 mm by 610 mm.

This survey was executed during the period of _____ to _____ by Colin D. Keir

NOTES:

All distances are horizontal at general ground level and are shown in metres and decimals thereof.
Balconies/Patios are exclusive use areas and denoted B1, B2, etc.

PRELIMINARY PLAN
SUBJECT TO REVISION

ACLS Checklist No.:

SGB Project No.:



Plan Date: April 13, 2026 Initials: AKM - CDK

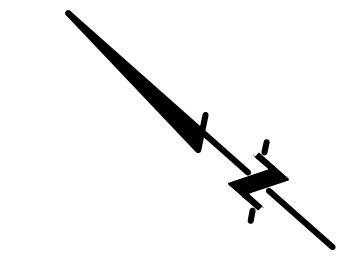
Project No.: 26-00098

File: 26-00098-001-CONDO-PRELIUM

Building "A" - 6th Level



The plot size that will provide true scale and optimum readability for this plan is 914 mm by 610 mm.
 This survey was executed during the period of _____ to _____ by Colin D. Keir

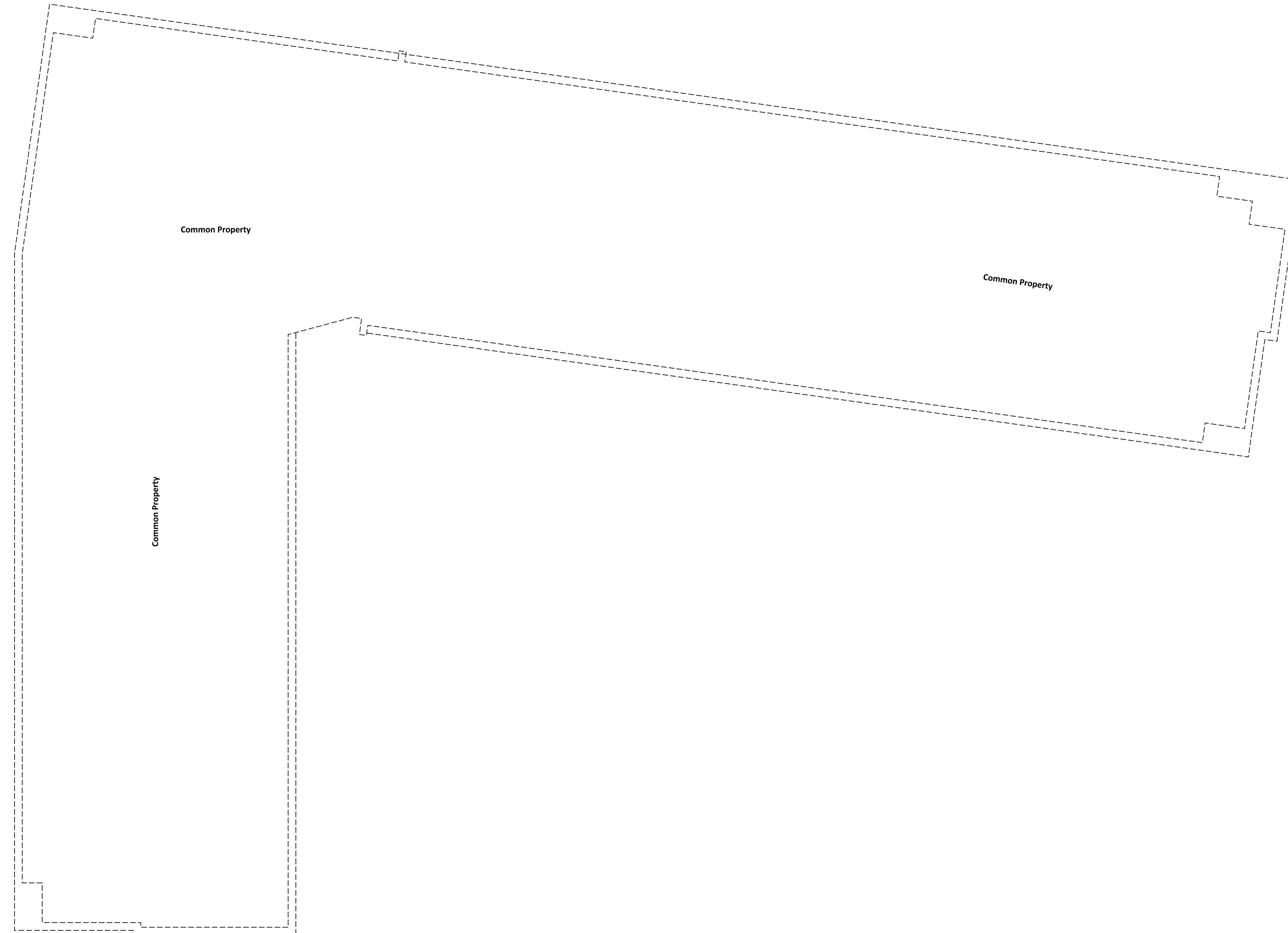


NOTES:
 All distances are horizontal at general ground level and are shown in metres and decimals thereof.
 Balconies/Patios are exclusive use areas and denoted B1, B2, etc.

PRELIMINARY PLAN
 SUBJECT TO REVISION

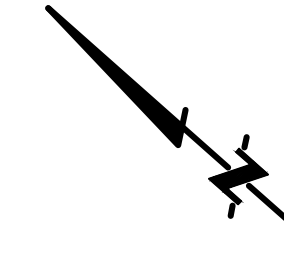
ACLS Checklist No.:	
SGB Project No.:	
 GeoVerra (AB) Limited Partnership Toll Free: 1-800-465-6233 www.geoverra.com	
Plan Date: April 13, 2026	Initials: AKM - CDK
Project No.: 26-00098	
File: 26-00098-001-CONDO-PRELIJ	Sheet 12 of 20

Building "A" - Roof Level



The plot size that will provide true scale and optimum readability for this plan is 914 mm by 610 mm.


This survey was executed during the period of _____ to _____ by Colin D. Keir



NOTES:

All distances are horizontal at general ground level and are shown in metres and decimals thereof.

PRELIMINARY PLAN
SUBJECT TO REVISION

ACLS Checklist No.:	
SGB Project No.:	
 GeoVerra <small>GeoVerra (AB) Limited Partnership Toll Free: 1-800-465-6233 www.geoverra.com</small>	
Plan Date: April 13, 2026	Initials: AKM - CDK
Project No.: 26-00098	
File: 26-00098-001-CONDO-PRELIM	Sheet 13 of 20

Building "B" - 1st Level

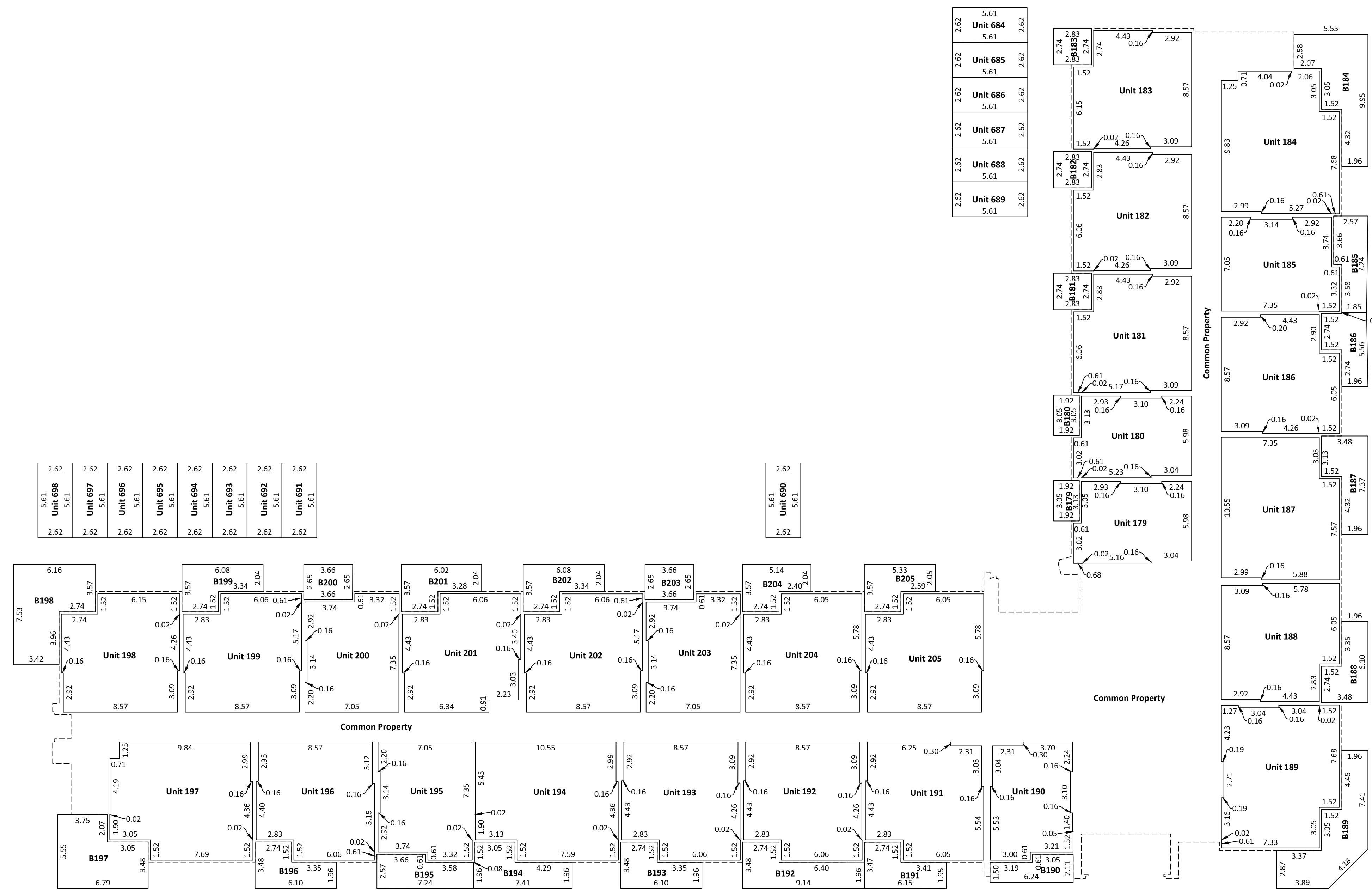


The plot size that will provide true scale and optimum readability for this plan is 914 mm by 610 mm.

This survey was executed during the period of _____ to _____ by Colin D. Keir

NOTES:

All distances are horizontal at general ground level and are shown in metres and decimals thereof.
Balconies/Patios are exclusive use areas and denoted B1, B2, etc.



5.61	2.62	2.62	2.62	2.62	2.62	2.62	2.62
Unit 698	Unit 697	Unit 696	Unit 695	Unit 694	Unit 693	Unit 692	Unit 691
2.62	2.62	2.62	2.62	2.62	2.62	2.62	2.62

5.61	2.62	2.62	2.62	2.62	2.62	2.62
Unit 684	Unit 685	Unit 686	Unit 687	Unit 688	Unit 689	Unit 690
2.62	2.62	2.62	2.62	2.62	2.62	2.62

2.62	5.61	5.61
Unit 690	Unit 690	Unit 690
2.62	5.61	5.61

PRELIMINARY PLAN
SUBJECT TO REVISION

ACLS Checklist No.:	
SGB Project No.:	
<small>GeoVerra (AB) Limited Partnership Toll Free: 1-800-465-6233 www.geoverra.com</small>	
Plan Date: April 13, 2026	Initials: AKM - CDK
Project No.: 26-00098	
File: 26-00098-001-CONDO-PRELIUM	Sheet 14 of 20

Building "B" - 2nd Level

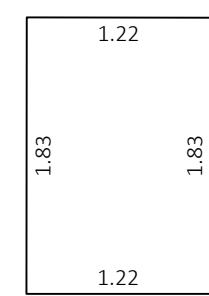
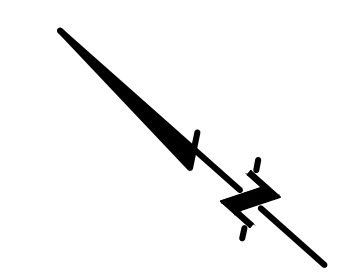


The plot size that will provide true scale and optimum readability for this plan is 914 mm by 610 mm.

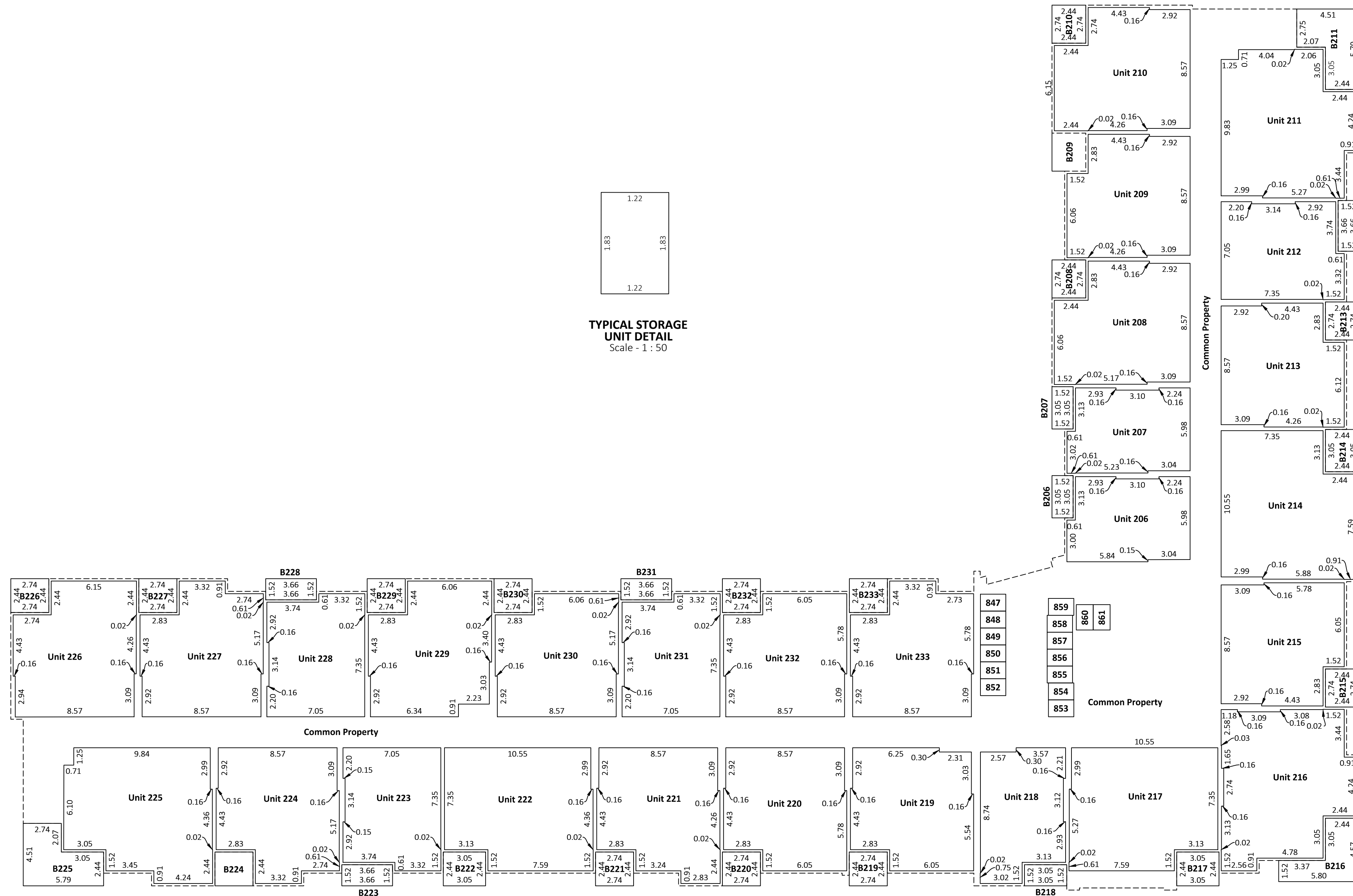
This survey was executed during the period of _____ to _____ by Colin D. Keir

NOTES:


All distances are horizontal at general ground level and are shown in metres and decimals thereof.
Balconies/Patios are exclusive use areas and denoted B1, B2, etc.



TYPICAL STORAGE UNIT DETAIL
Scale - 1 : 50



PRELIMINARY PLAN
SUBJECT TO REVISION

ACLS Checklist No.:	
SGB Project No.:	
 GeoVerra (AB) Limited Partnership Toll Free: 1-800-465-6233 www.geoverra.com	
Plan Date: April 13, 2026	Initials: AKM - CDK
Project No.: 26-00098	
File: 26-00098-001-CONDO-PRELIUM	Sheet 15 of 20

Building "B" - 3rd Level

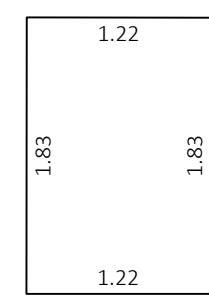
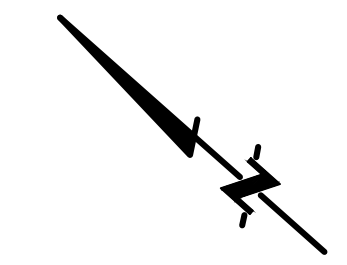


The plot size that will provide true scale and optimum readability for this plan is 914 mm by 610 mm.

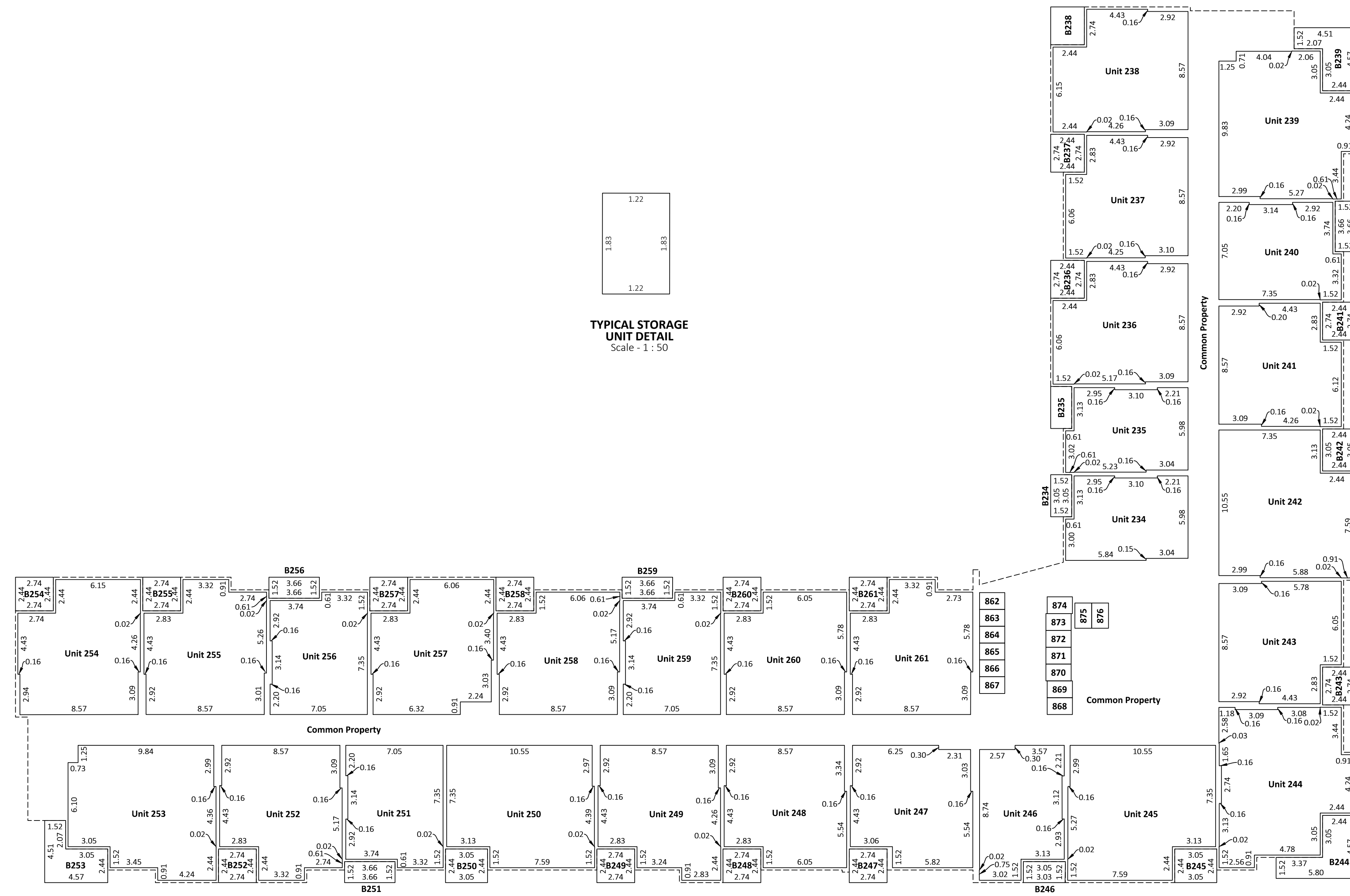
This survey was executed during the period of _____ to _____ by Colin D. Keir

NOTES:

All distances are horizontal at general ground level and are shown in metres and decimals thereof.
Balconies/Patios are exclusive use areas and denoted B1, B2, etc.



TYPICAL STORAGE UNIT DETAIL
Scale - 1 : 50



PRELIMINARY PLAN
SUBJECT TO REVISION

ACLS Checklist No.:	
SGB Project No.:	
<small>GeoVerra (AB) Limited Partnership Toll Free: 1-800-465-6233 www.geoverra.com</small>	
Plan Date: April 13, 2026	Initials: AKM - CDK
Project No.: 26-00098	
File: 26-00098-001-CONDO-PRELIUM	Sheet 16 of 20

Building "B" - 4th Level

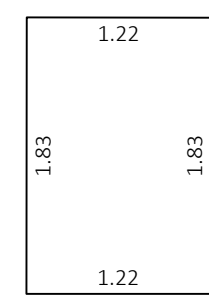
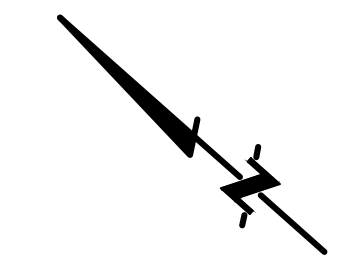


The plot size that will provide true scale and optimum readability for this plan is 914 mm by 610 mm.

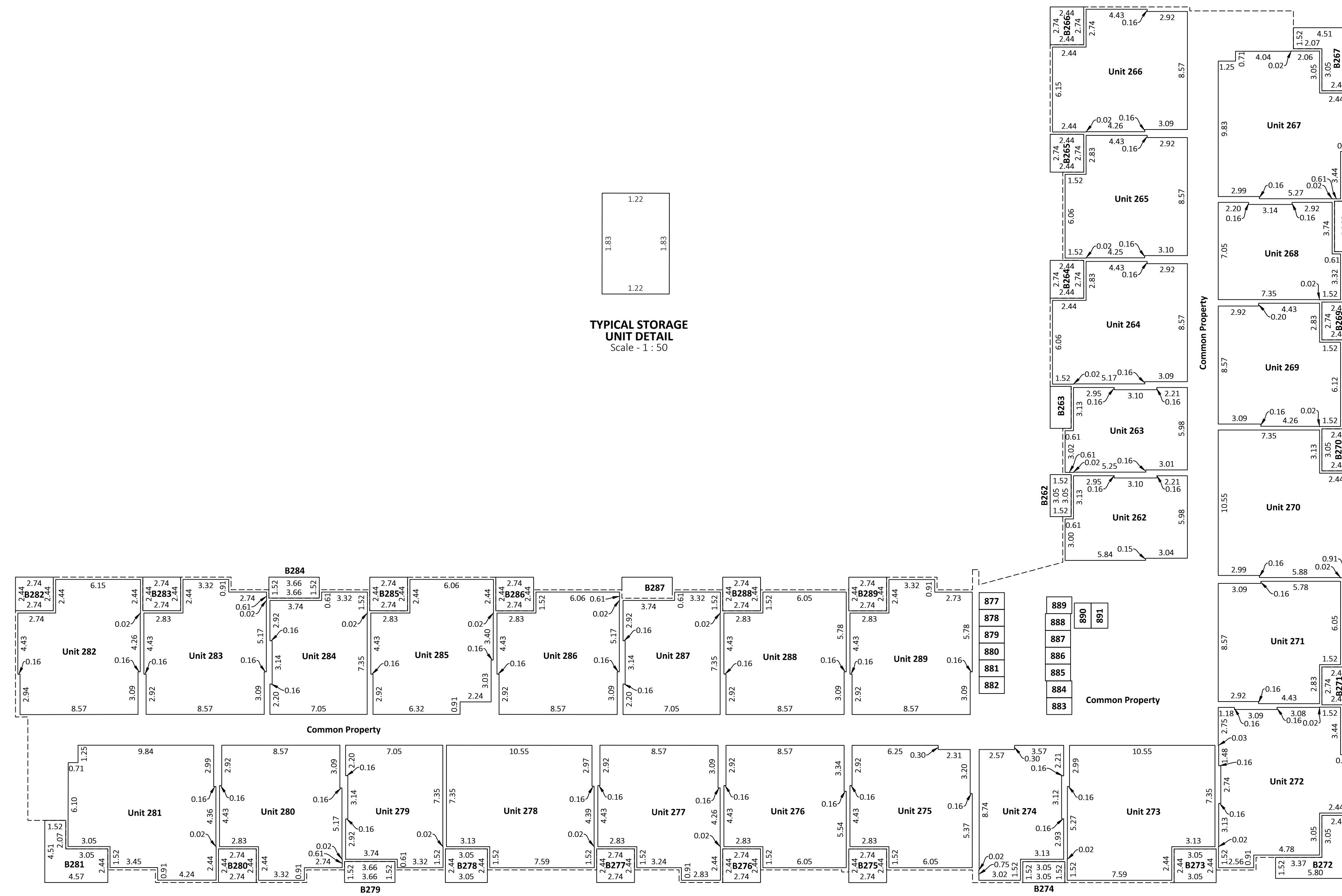
This survey was executed during the period of _____ to _____ by Colin D. Keir

NOTES:


All distances are horizontal at general ground level and are shown in metres and decimals thereof.
Balconies/Patios are exclusive use areas and denoted B1, B2, etc.



TYPICAL STORAGE UNIT DETAIL
Scale - 1 : 50



PRELIMINARY PLAN
SUBJECT TO REVISION

ACLS Checklist No.:	
SGB Project No.:	
 GeoVerra (AB) Limited Partnership Toll Free: 1-800-465-6233 www.geoverra.com	
Plan Date: April 13, 2026	Initials: AKM - CDK
Project No.: 26-00098	
File: 26-00098-001-CONDO-PRELIUM	Sheet 17 of 20

Building "B" - 6th Level

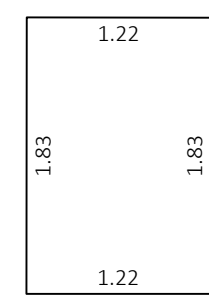
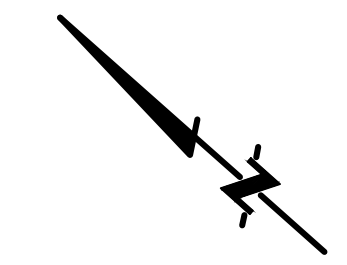


The plot size that will provide true scale and optimum readability for this plan is 914 mm by 610 mm.

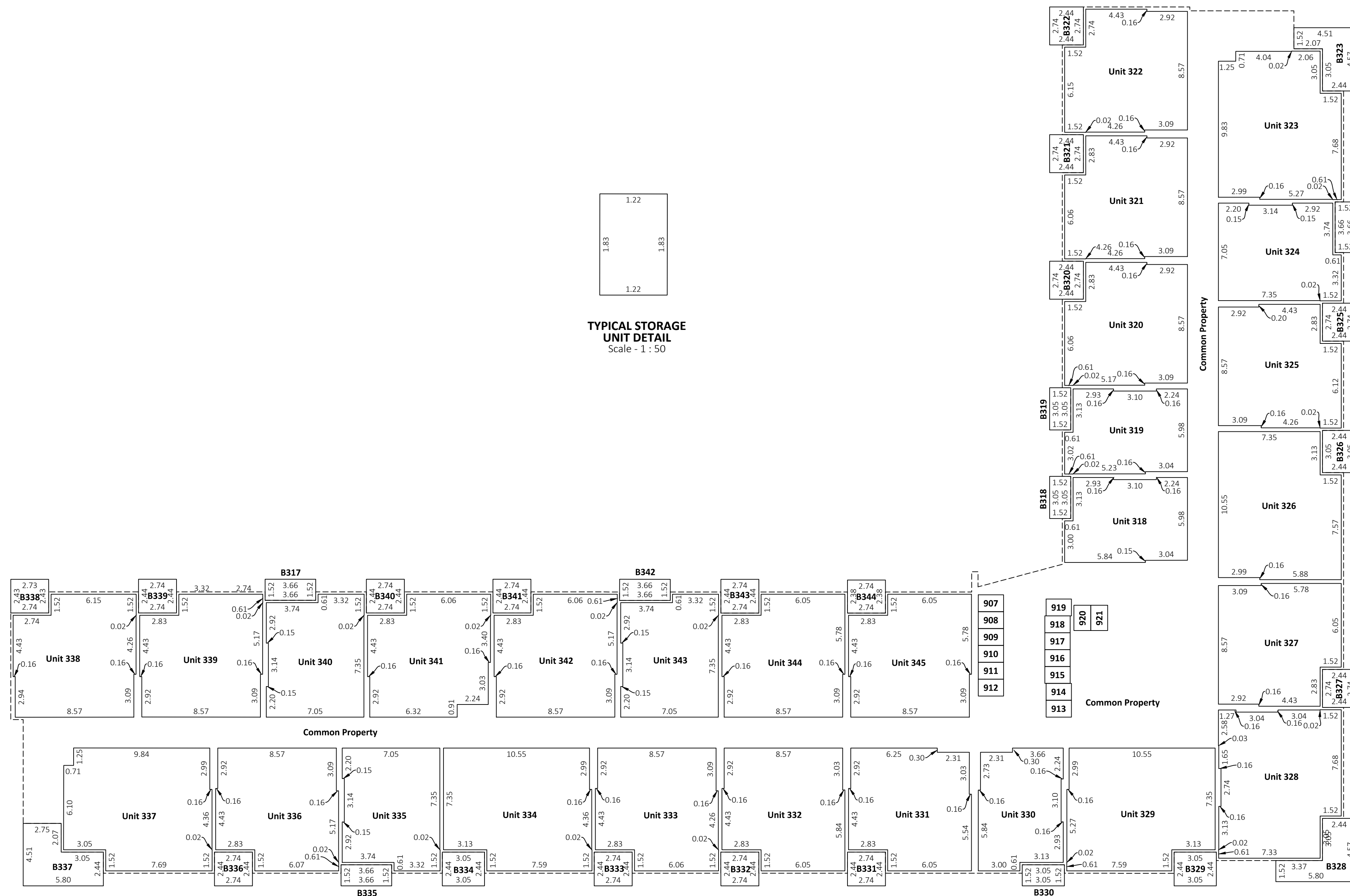
This survey was executed during the period of _____ to _____ by Colin D. Keir

NOTES:


All distances are horizontal at general ground level and are shown in metres and decimals thereof.
Balconies/Patios are exclusive use areas and denoted B1, B2, etc.



TYPICAL STORAGE UNIT DETAIL
Scale - 1 : 50



PRELIMINARY PLAN
SUBJECT TO REVISION

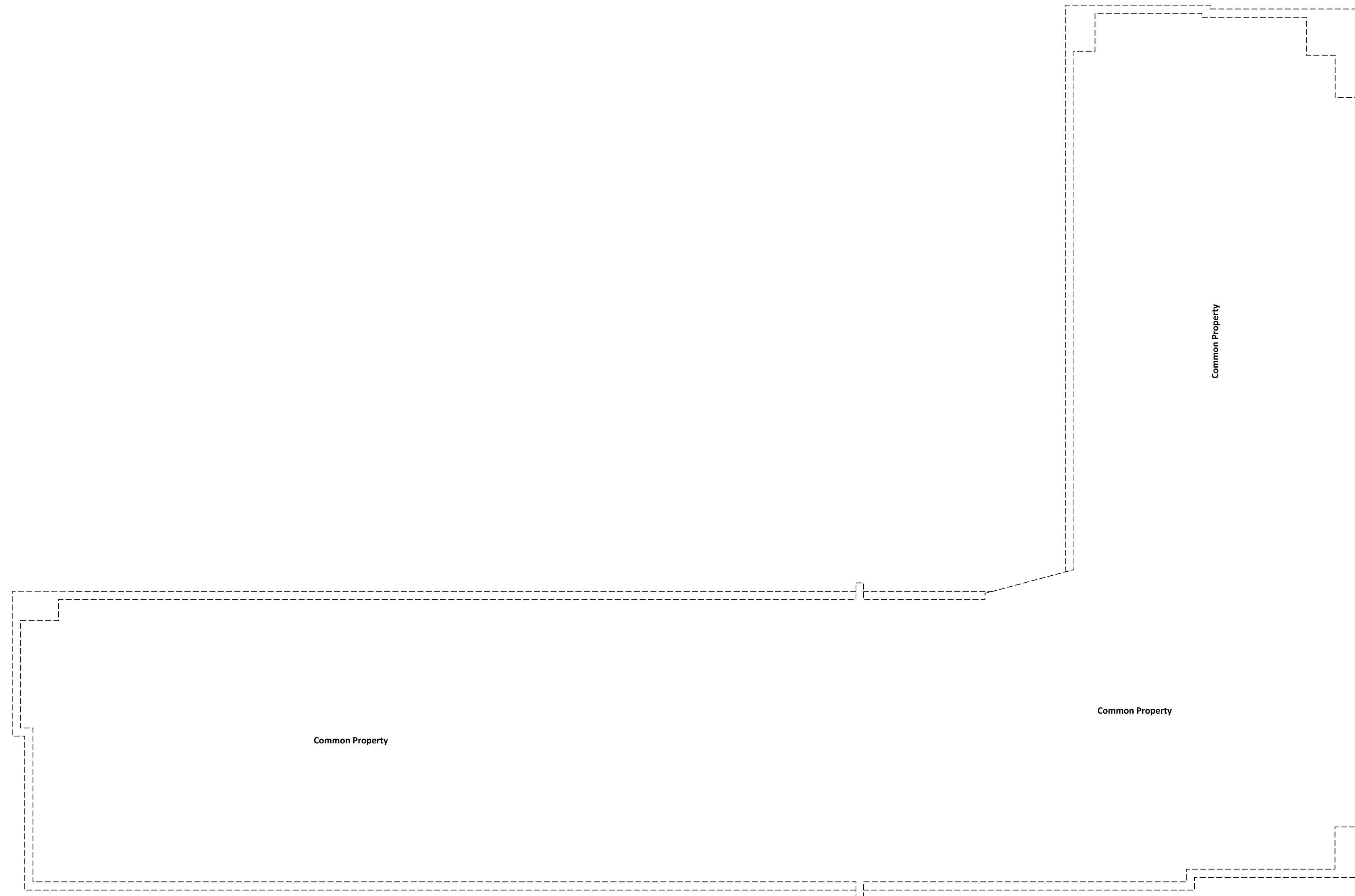
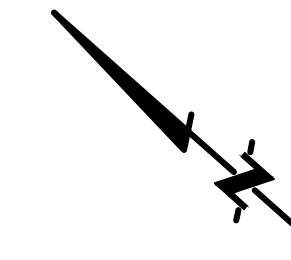
ACLS Checklist No.:	
SGB Project No.:	
 GeoVerra (AB) Limited Partnership Toll Free: 1-800-465-6233 www.geoverra.com	
Plan Date: April 13, 2026	Initials: AKM - CDK
Project No.: 26-00098	
File: 26-00098-001-CONDO-PRELIUM	

Building "B" - Roof Level



The plot size that will provide true scale and optimum readability for this plan is 914 mm by 610 mm.

This survey was executed during the period of _____ to _____ by Colin D. Keir



NOTES:

All distances are horizontal at general ground level and are shown in metres and decimals thereof.

PRELIMINARY PLAN
SUBJECT TO REVISION

ACLS Checklist No.:

SGB Project No.:



Plan Date: April 13, 2026 Initials: AKM - CDK

Project No.: 26-00098

File: 26-00098-001-CONDO-PRELIM